



2011-12 ULM MEN'S BASKETBALL

ULM MEDIA RELATIONS • JEREMY STEVENS • MEN'S BASKETBALL CONTACT
318-547-5134 • JSTEVENS@ULM.EDU • ULMWARHAWKS.COM

ULM SCHEDULE/RESULTS

| | | | |
|----------|-----|-----------|-----|
| Overall: | 1-9 | Sun Belt: | 0-0 |
| Home: | 0-4 | Home: | 0-0 |
| Away: | 1-5 | Away: | 0-0 |
| Neutral: | 0-0 | Neutral: | 0-0 |

EXHIBITION

| Date | Opponent | Time/Result |
|--------|--------------------------|-------------|
| Nov. 1 | LUBBOCK CHRISTIAN (EXH.) | W, 67-63 |
| Nov. 7 | PHILANDER SMITH (EXH.) | W, 82-69 |

REGULAR SEASON

| Date | Opponent | Time/Result |
|---------|-----------------------------|-------------|
| Nov. 11 | at Ole Miss | L, 38-60 |
| Nov. 14 | INDIANA STATE | L, 59-71 |
| Nov. 16 | at Tennessee | L, 62-85 |
| Nov. 19 | at Southeastern Louisiana | L, 60-63 |
| Nov. 21 | at No. 25 Mississippi State | L, 63-78 |
| Nov. 26 | HARDING | L, 68-71 |
| Nov. 28 | at Nicholls State | W, 86-65 |

| | | |
|---------|---------------------|-----------|
| Dec. 3 | LOUISIANA TECH | L, 71-73 |
| Dec. 10 | at No. 22 Texas A&M | L, 54-67 |
| Dec. 12 | NICHOLLS STATE | L, 70-82 |
| Dec. 15 | NORTHWESTERN STATE | 7 p.m. |
| Dec. 19 | at UNLV | 8 p.m. |
| Dec. 21 | at Indiana State | 7 p.m. |
| Dec. 29 | WESTERN KENTUCKY* | 7:30 p.m. |
| Dec. 31 | ARKANSAS STATE* | 4 p.m. |

| | | |
|---------|----------------------|-----------|
| Jan. 5 | at Florida Atlantic* | 6 p.m. |
| Jan. 7 | at FIU* | 6:30 p.m. |
| Jan. 12 | UALR* | 7:30 p.m. |
| Jan. 14 | NORTH TEXAS* | 4 p.m. |
| Jan. 19 | DENVER* | 7:30 p.m. |
| Jan. 21 | at Troy* | 7:30 p.m. |
| Jan. 28 | UL-LAFAYETTE* | 4 p.m. |

| | | |
|---------|--------------------------|-----------|
| Feb. 2 | at Arkansas State* (SBN) | 8 p.m. |
| Feb. 4 | at UALR* | 7 p.m. |
| Feb. 11 | SOUTH ALABAMA* | 2 p.m. |
| Feb. 16 | at North Texas* | 7 p.m. |
| Feb. 18 | at Denver* | 5 p.m. |
| Feb. 23 | MIDDLE TENNESSEE* | 7:30 p.m. |
| Feb. 25 | at UL-Lafayette* | 7:15 p.m. |

All time Central

BOLD CAPS denotes home games

*denotes Sun Belt Conference games

ULM NAME USAGE

We are ULM. Please note that there are only two correct versions of our institution's name, the preferred acronym ULM and the full name, the University of Louisiana at Monroe. Any other reference, including Louisiana-Monroe, UL-Monroe, La.-Monroe, LAM, or simply Monroe, is incorrect. Additionally, all women's athletic teams are known simply as Warhawks -- not Lady Warhawks or Lady Hawks.



ULM WARHAWKS (1-9, 0-0 SUN BELT)

VS. NORTHWESTERN STATE DEMONS (4-5, 0-0 SOUTHLAND)

| | |
|----------------|--|
| Date | Thursday, Dec. 15, 2011 |
| Tipoff | 7 p.m. CT |
| Location | Fant-Ewing Coliseum (Monroe, La.) |
| Series History | ULM leads 70-47 |
| Last Meeting | L, 65-81 (2005-06) |
| Coaches | NSU's Mike McConathy (540-352) vs. ULM's Keith Richard (158-150) |
| Radio | 105.3 FM, Nick White (pbp) |
| Live Stats | ulmwarhawks.com |
| Live Video | ulmwarhawks.com |

WARHAWK QUICK HITS

- ULM is in its 61st season of basketball. The Warhawks have won 10 regular season conference championships, eight conference tournament championships and have made seven NCAA Tournament appearances.
- ULM returns three starters and eight letterwinners off a team that finished 7-24 overall, 2-14 in the Sun Belt last season. The Warhawks also welcome in five newcomers. ULM was picked to finish sixth in the West Division of the Sun Belt Conference.
- ULM has lost three games this season by three points or less, including a 73-71 loss to Louisiana Tech (Dec. 3).
- ULM entered the week ranked 67th nationally in 3-point percentage and 82nd in 3-pointers made per game. The Warhawks are averaging just 12.1 turnovers per game, which ranks 35th in the country.
- ULM has led or been tied with three teams from power six conferences this season, including against a pair of ranked opponents (Texas A&M and Mississippi State).
- Sophomore guard Charles Winborne netted a career-high 20 points on 7-of-12 shooting Monday against Nicholls State. Winborne ranks second on the team in scoring with 12.4 points per outing.
- Senior guard Fred Brown leads ULM and ranks eighth in the Sun Belt in scoring with 13.8 points per game. Brown is just 83 points shy of reaching 1,000 for his career.

ULM PROBABLE STARTERS

| NO. | NAME | POS. | HT. | WT. | YR. | HOMETOWN | PPG | RPG | APG |
|-----|-----------------------|------|-----|-----|-----|-----------------------|------|-----|-----|
| 15 | Steven McClellan | C | 6-7 | 250 | So. | Fresno, Calif. | 5.7 | 6.7 | 0.0 |
| 5 | Christian Bibi Ndonga | F | 6-8 | 195 | Sr. | Yaounde, Cameroon | 4.0 | 3.0 | 0.3 |
| 11 | Charles Winborne | G | 6-1 | 185 | So. | Shreveport, La. | 12.4 | 2.5 | 2.8 |
| 24 | Hugh Mingo | G | 6-3 | 175 | Sr. | West Monroe, La. | 7.7 | 4.5 | 1.3 |
| 55 | Fred Brown | G | 6-2 | 190 | Sr. | West Palm Beach, Fla. | 13.8 | 2.6 | 2.3 |

ULM OFF THE BENCH

| NO. | NAME | POS. | HT. | WT. | YR. | HOMETOWN | PPG | RPG | APG |
|-----|--------------------|------|------|-----|-----|---------------------|-----|-----|-----|
| 3 | Marcelis Hansberry | G | 6-0 | 180 | So. | Jackson, Miss. | 6.2 | 2.5 | 2.0 |
| 4 | R.J. McCray | G | 6-2 | 180 | So. | Arlington, Texas | 3.2 | 1.3 | 1.1 |
| 10 | Trent Mackey | G | 6-3 | 180 | Fr. | Tampa, Fla. | 6.8 | 1.6 | 1.4 |
| 35 | Trey Lindsey | F | 6-6 | 205 | Fr. | Austin, Texas | 3.4 | 2.6 | 1.2 |
| 41 | Fabio Ribeiro | C | 6-10 | 250 | Sr. | Caetnopolis, Brazil | 4.7 | 5.3 | 0.4 |

NORTHWESTERN STATE PROBABLE STARTERS

| NO. | NAME | POS. | HT. | WT. | YR. | HOMETOWN | PPG | RPG | APG |
|-----|------------------|------|-----|-----|-----|-------------------|------|------|------|
| 34 | Gary Roberson | F | 6-5 | 235 | Jr. | Natchitoches, La. | 8.2 | 3.7 | 0.4 |
| 42 | William Mosley | C | 6-7 | 220 | Sr. | Shreveport, La. | 8.6 | 10.7 | 4.3* |
| 0 | Shamir Davis | G | 6-0 | 180 | Jr. | Shreveport, La. | 12.9 | 1.9 | 2.9 |
| 1 | Demetrick Jacobs | G | 6-3 | 185 | Jr. | Harlem, N.Y. | 6.6 | 2.7 | 1.2 |
| 22 | Louis Ellis | G | 6-2 | 185 | Sr. | Shreveport, La. | 9.1 | 3.4 | 2.4 |

*denotes blocks per game



ULM QUICK FACTS

UNIVERSITY INFORMATION

| | |
|-----------------------------|---|
| Name | ULM (University of Louisiana at Monroe) |
| Location | Monroe, La. (Ouachita Parish) |
| Founded | 1931 |
| Enrollment | 8,858 |
| Nickname/Mascot | Warhawks/Ace |
| Colors | Maroon & Gold |
| Conference | Sun Belt |
| Affiliation | NCAA Division I |
| President | Dr. Nick Bruno |
| Director of Athletics | Bobby Staub |

HOME COURT INFORMATION

| | |
|---------------------------------------|---------------------|
| Facility | Fant-Ewing Coliseum |
| Capacity | 7,000 |
| Opened | 1971 |
| Playing Surface | Maple |
| All-Time Record | 381-145 |
| Championship Tournaments Hosted | 10 |
| Press Row Phone | (318) 342-6920 |

PROGRAM INFORMATION

| | |
|---|---------------------------------|
| First Season | 1951-52 |
| Total Seasons | 60 |
| All-Time Record | 894-757 |
| All-Time Conference Record | 383-317 |
| Gulf States (18 seasons) | 100-98 |
| Atlantic Sun (4 seasons) | 23-11 |
| Southland (24 seasons) | 231-149 |
| Sun Belt (5 seasons) | 29-59 |
| Winning Seasons | 38 |
| Last | 2006-07 (18-14) |
| 20-Plus Win Seasons | 10 |
| Last | 2001-02 (20-12) |
| Regular Season Conference Championships | 10 |
| .. (1962, 1965, 1980, 1986, 1990, 1991, 1993, 1994, 1996, 1997) | |
| Conference Tournament Titles | 8 |
| (1979, 1982, 1986, 1990, 1991, 1992, 1993, 1996) | |
| NCAA Tournament Appearances | 7 |
| Last | 1996 (Wake Forest: L, 50-62) |
| NIT Appearances | 2 |
| Last | 1988 (Arkansas State: L, 59-70) |

2010-11 SEASON RECAP

| | |
|-----------------------------|-----------------|
| Overall Record | 7-24 |
| Home | 4-9 |
| Away | 2-13 |
| Neutral | 1-2 |
| SBC Record | 2-14 (6th West) |
| Home | 0-8 |
| Away | 2-6 |
| SBC Tournament Record | 0-1 |
| Starters R/L | 3/2 |
| Letterwinners R/L | 8/4 |
| Newcomers (HS/TR) | 5 (4/1) |
| Returning Scoring | .62 percent |
| Returning Rebounding | .58 percent |

BASKETBALL STAFF

| | |
|-------------------------------|--|
| Head Coach | Keith Richard |
| Alma Mater | ULM, 1982 |
| Record at ULM | 7-24 (1 season) |
| Career Record | 157-141 (10 seasons) |
| Assistant Coach | Cord Wright (Limestone, 2002) |
| Assistant Coach | Brandon Roberts (ULM, 2009) |
| Athletic Trainer | Jeremy Teblum (Florida State, 2009) |
| Strength & Conditioning | Joe Girardi (Miami, Fla., 2009) |
| Video Coordinator | Matt Braunscheidel (St. Bonaventure, 2006) |
| Academic Counselor | Elizabeth Holbert (Ole Miss, 2008) |

GAME BASICS

The Warhawks (1-9) conclude a two-game homestand Thursday against Northwestern State (4-5) at 7 p.m. inside Fant-Ewing Coliseum. The game can be heard on 105.3 FM in Monroe or online at ulmwarhawks.com, with Nick White calling the action. Live stats and live video are available by visiting ulmwarhawks.com.

UPDATING THE WARHAWKS

• ULM shot just 38.5 percent from the field Monday in an 82-70 loss at home against Nicholls State. The Warhawks converted on 25 of 65 shots just two weeks removed from shooting a season-best 62 percent in an 86-65 victory over the Colonels in Thibodaux.

• Sophomore guard Charles Winborne notched a career-high 20 points on 7-of-12 shooting against Nicholls State. Winborne ranks 12th in the Sun Belt in scoring with 12.4 points per game and seventh with an average of 2.1 3-pointers per game. He is shooting 44.7 percent from beyond the arc, which ranks eighth in the conference.

• Senior guard Fred Brown leads the Warhawks and ranks eighth in the Sun Belt in scoring with 13.8 points per game. Brown is shooting 39.3 percent from the field, 41.5 percent from 3-point range and 80 percent from the free-throw line. He leads the team and ranks second in the conference with 22 3-point makes this season. Brown enters Thursday just 83 points shy of reaching 1,000 for his career.

• Senior guard Hugh Mingo has scored in double figures in back-to-back games, including 21 points at Texas A&M on Dec. 10. Mingo is also averaging 8.0 rebounds and 2.5 assists while shooting 59.1 percent from the field over the past two games.

• Freshman guard Trent Mackey hit a pair of 3-pointers Monday against Nicholls State to bring his season total to 16. Mackey is shooting 40 percent from beyond the arc this season.

• The Warhawks pulled down a season-best 42 rebounds, including 17 offensive rebounds Monday. ULM has outrebounded three of its last four opponents after being outrebounded in six straight games to open the season.

• A huge reason for the recent rebounding success is sophomore Steven McClellan. The 6-foot-7 center is averaging a team-high 6.7 rebounds in three games since coming out of redshirt.

• The Warhawks have taken care of the ball through 10 games this season, ranking 35th nationally with just 12.2 turnovers per game. ULM also ranks 87th in the country in assist-turnover ratio (1.06).

• As a team, the Warhawks rank fourth in the Sun Belt in field-goal percentage (.424) and sixth in 3-point percentage (.372). ULM also ranks fourth in the conference in 3-pointers per game (7.3).

• The ULM bench has outscored its opponent's bench in 7 of 10 games so far this season. The Warhawks are averaging 23.7 points off the bench and are outscoring their opponents' bench by an average of 5.2 points per game.

OTHER NOTES

• ULM shot a season-best 62 percent from the field against Nicholls State (Nov. 28). It was the Warhawks' highest shooting percentage in a game since December of 2009.

• ULM has hung tough with some of the best teams in the country this season. The Warhawks led then No. 25 Mississippi State by two points with 14:13 remaining (Nov. 21) and most recently were tied 43-all at No. 22 Texas A&M with 13:20 to play (Dec. 10). In addition, ULM also had a second-half lead at Tennessee on Nov. 16.

ULM has three players that are shooting over 40 percent from 3-point range this season (Fred Brown, Charles Winborne, Trent Mackey). The Warhawks rank fourth in the Sun Belt and 67th nationally in 3-point percentage (.372).

• The Warhawks made at least 10 3-pointers in back-to-back games earlier this season. ULM had 11 3s against Harding (Nov. 26) and followed it up with 12 3s against Nicholls State (Nov. 28). ULM has made 73 3-pointers so far this season.

• The Warhawks are playing the 2011-12 season with just nine active scholarship players and are banned from participating in postseason play due to NCAA APR sanctions.

PREVIEWING THE DEMONS

• Northwestern State enters play Thursday with a record of 4-5 on the season. The Demons are coming off a 94-93 loss in overtime at Louisiana Tech back on Dec. 6.

• The Demons have wins this season over Letourneau (87-61), Alabama State (67-60), Jacksonville State (66-61) and UALR (80-65). Northwestern State is averaging 68.8 points per game while shooting 39.5 percent from the field, 30.1 percent from 3-point range and 58 percent from the free-throw line.

• Junior Shamir Davis leads Northwestern State in scoring with 12.9 points per game. Davis is shooting 47.0 percent from the

STATS COMPARISON

CATEGORY

| | | |
|------------------------|------|------|
| Overall Record | 1-9 | 4-5 |
| Conference Record | 0-0 | 0-0 |
| Points Per Game | 63.1 | 68.8 |
| Opp. Points Per Game | 71.5 | 73.0 |
| Rebounds Per Game | 30.8 | 38.0 |
| Rebounding Margin | -4.0 | -4.2 |
| Field Goal Pct. | .424 | .395 |
| Opp. Field Goal Pct. | .458 | .430 |
| 3-Point Pct. | .372 | .301 |
| Opp. 3-Point Pct. | .368 | .351 |
| Free Throw Pct. | .683 | .580 |
| Assists Per Game | 12.7 | 11.4 |
| Turnovers Per Game | 12.2 | 15.0 |
| Turnover Margin | -1.3 | +2.2 |
| Blocked Shots Per Game | 2.1 | 7.7 |
| Steals Per Game | 4.6 | 9.6 |

**CAREER TOTALS FOR CURRENT WARHAWKS****POINTS**

| | |
|-----------------------------|-----|
| Fred Brown..... | 917 |
| Hugh Mingo | 372 |
| Marcelis Hansberry..... | 163 |
| Steven McClellan..... | 161 |
| Fabio Ribeiro | 149 |
| Charles Winborne..... | 127 |
| R.J. McCray..... | 101 |
| Christian Bibi Ndongo | 70 |
| Trent Mackey..... | 68 |
| Trey Lindsey | 34 |
| Ife Eke | 0 |
| D'Andre Martin..... | 0 |
| Reginald Smith | 0 |

REBOUNDS

| | |
|-----------------------------|-----|
| Hugh Mingo | 192 |
| Fred Brown..... | 177 |
| Fabio Ribeiro | 135 |
| Steven McClellan..... | 133 |
| Christian Bibi Ndongo | 62 |
| Marcelis Hansberry..... | 60 |
| R.J. McCray..... | 33 |
| Trey Lindsey | 26 |
| Charles Winborne..... | 26 |
| Trent Mackey..... | 16 |
| Ife Eke | 3 |
| D'Andre Martin..... | 0 |
| Reginald Smith | 0 |

ASSISTS

| | |
|-----------------------------|-----|
| Fred Brown..... | 163 |
| Marcelis Hansberry..... | 65 |
| Hugh Mingo | 53 |
| Charles Winborne..... | 28 |
| R.J. McCray..... | 25 |
| Steven McClellan..... | 14 |
| Trent Mackey..... | 14 |
| Trey Lindsey | 12 |
| Fabio Ribeiro | 11 |
| Christian Bibi Ndongo | 7 |
| Ife Eke | 0 |
| D'Andre Martin..... | 0 |
| Reginald Smith | 0 |

STEALS

| | |
|-----------------------------|----|
| Fred Brown..... | 87 |
| Hugh Mingo | 47 |
| Marcelis Hansberry..... | 18 |
| Steven McClellan..... | 13 |
| Fabio Ribeiro | 10 |
| R.J. McCray..... | 9 |
| Christian Bibi Ndongo | 8 |
| Trey Lindsey | 5 |
| Charles Winborne..... | 3 |
| Trent Mackey..... | 3 |
| D'Andre Martin..... | 1 |
| Ife Eke | 0 |
| Reginald Smith | 0 |

BLOCKS (Top Five Only)

| | |
|-----------------------------|----|
| Christian Bibi Ndongo | 17 |
| Steven McClellan..... | 11 |
| Fabio Ribeiro | 10 |
| Fred Brown..... | 8 |
| Hugh Mingo | 7 |

field, 22.2 percent from 3-point range and 65.4 percent from the free-throw line. He also leads the team with 2.9 assists per game. Junior James Hulbin is the only other player in double figures in scoring with 10.1 points per game. Senior William Mosley ranks second in the NCAA in blocked shots per game (4.3) and 15th in rebounds per game (10.7).

• Mike McConathy is in his 13th season as the head coach of the Demons and has compiled an overall record of 188-193. McConathy has guided Northwestern State to two NCAA Tournament appearances, including an upset victory against third-seeded Iowa in the 2006 NCAA Tournament.

SERIES HISTORY

ULM has faced no opponent more times in school history than Northwestern State. The two former Southland rivals will be meeting for the 118th time Thursday, but for just the first time since 2005-06. ULM holds a commanding 70-47 edge in the all-time series; however Northwestern State has won the past five meetings, including a sweep of the Warhawks during the 2005-06 season.

UP NEXT

ULM travels to Las Vegas, Nev., to take on UNLV Monday (Dec. 19) at 8 p.m. CT.

MCCLELLAN MAKES SEASON DEBUT

Sophomore Steven McClellan saw his first action of the season Dec. 3 against Louisiana Tech. McClellan came off the bench with six points, seven rebounds and a blocked shot in 21 minutes of action. The 6-foot-7 center was slated to redshirt this season, but adds much needed height to the ULM frontcourt.

BROWN CHASING 1,000 POINTS

Senior guard Fred Brown moved to within 83 points of reaching 1,000 for his career Saturday against Texas A&M. Brown, who scored 380 points in two seasons with Kansas State, has been the leading scorer for ULM for two straight years. He has notched double figures in scoring in 42 games during his career, including seven times this season.

ULM CLOSING IN ON 900 WINS

In its 61st season of men's basketball, ULM is just six wins shy of reaching 900 in its history. The men's basketball program has been one of the finest at ULM over the years as the Warhawks have captured 10 regular season conference titles, eight conference tournament championships and have appeared in the NCAA Tournament seven times and the NIT twice.

WARHAWK INK TWO IN EARLY SIGNING PERIOD

ULM men's basketball head coach Keith Richard announced Thursday the signing of high school seniors Kyle Koszuta and Taylor Birchett to national letters of intent. Koszuta and Birchett are the first two players to sign with the Warhawks for the 2012-13 season.

"We are excited about Kyle and Taylor joining our team next season," Richard said. "They're great kids that come from great families and will help us move this program forward."

Koszuta, a 6-1 point guard, attends Niceville High School in Niceville, Fla. Koszuta averaged 16.1 points and 1.5 assists as a junior, helping the Eagles to a 15-9 record. He scored a season-best 31 points on 12-of-23 shooting against Bainbridge (Ga.) last season.

Birchett, a 6-4 shooting guard, attends Roswell High School in Roswell, Ga. He led his team in scoring with 16.5 points as a junior and helped Roswell to its first Georgia 'Sweet 16' appearance in 14 years. He shot 43.2 percent from the field (118-of-273) and 40.3 percent from 3-point range (54-of-134) as a junior and was named to the 6-5A all-region team and the All-North Fulton Prep Rally first team.

EKE TO REDSHIRT IN 2011-12

ULM men's basketball head coach Keith Richard announced Tuesday that sophomore Ife Eke will redshirt during the 2011-12 season and will have three years of eligibility remaining starting next season. The Warhawks will play the season with nine scholarship players.

Eke suffered a season-ending injury by tearing his anterior cruciate ligament (ACL) in practice last week and is expected to have surgery in the near future.

FAMILIAR FOES

ULM will renew in-state rivalries against former Southland Conference foes Northwestern State, Southeastern Louisiana and Nicholls State in 2011-12. The Warhawks will also face Louisiana Tech for the fourth consecutive season.

ULM has faced Northwestern State more than any other team as the two will meet for the 118th time this season. The Warhawks and Demons have not faced each other since 2005-06, the last season ULM competed in the Southland. Similarly, the Warhawks will meet Southeastern Louisiana for the 91st time and Nicholls State for the 71st time in school history.



SUN BELT STANDINGS

| EAST DIVISION | Sun Belt | | | Overall | | |
|------------------|----------|---|------|---------|---|------|
| | W | L | Pct. | W | L | Pct. |
| Middle Tennessee | 0 | 0 | .000 | 10 | 2 | .833 |
| South Alabama | 0 | 0 | .000 | 5 | 3 | .625 |
| Troy | 0 | 0 | .000 | 4 | 4 | .500 |
| Florida Atlantic | 0 | 0 | .000 | 4 | 6 | .400 |
| Western Kentucky | 0 | 0 | .000 | 4 | 7 | .364 |
| FIU | 0 | 0 | .000 | 3 | 6 | .333 |

| WEST DIVISION | Sun Belt | | | Overall | | |
|----------------|----------|----------|-------------|----------|----------|-------------|
| | W | L | Pct. | W | L | Pct. |
| Denver | 0 | 0 | .000 | 6 | 2 | .750 |
| UL-Lafayette | 0 | 0 | .000 | 5 | 6 | .455 |
| Arkansas State | 0 | 0 | .000 | 4 | 5 | .444 |
| North Texas | 0 | 0 | .000 | 4 | 5 | .444 |
| UALR | 0 | 0 | .000 | 3 | 8 | .273 |
| ULM | 0 | 0 | .000 | 1 | 9 | .111 |



MID-MAJOR TOP 25 (Dec. 12, 2011)

| No. | School | Record | Pts. | Prev. |
|-----|-----------------------|--------|------|-------|
| 1. | Creighton (21) | 7-1 | 740 | 1 |
| 2. | Murray State (5) | 10-0 | 697 | 10 |
| 3. | Harvard (1) | 9-1 | 693 | 2 |
| 4. | Cleveland State (1) | 10-1 | 625 | 5 |
| 5. | Iona | 7-2 | 593 | 3 |
| 6. | Belmont | 6-2 | 581 | 6 |
| 7. | Wichita State | 7-2 | 572 | 7 |
| 8. | Kent State (1) | 7-1 | 568 | 8 |
| 9. | Gonzaga (1) | 5-2 | 528 | 4 |
| 10. | Saint Mary's | 5-1 | 492 | 9 |
| 11. | Northern Iowa (1) | 9-1 | 454 | 21 |
| 12. | BYU | 8-2 | 442 | 15 |
| 13. | Weber State | 6-2 | 329 | 11 |
| 14. | UC Santa Barbara | 4-2 | 313 | 14 |
| 15. | George Mason | 7-3 | 294 | 12 |
| 16. | Indiana State | 7-2 | 261 | 16 |
| 17. | College of Charleston | 7-1 | 254 | 19 |
| 18. | Ohio | 7-1 | 230 | 25 |
| 19. | Middle Tennessee | 9-2 | 232 | 17 |
| 20. | VCU | 6-3 | 226 | 20 |
| 21. | Oakland | 6-4 | 174 | 18 |
| 22. | Long Beach State | 4-5 | 161 | 13 |
| 23. | Denver | 6-2 | 106 | NR |
| 24. | Loyola (MD) | 8-1 | 79 | NR |
| 25. | Campbell | 8-1 | 64 | NR |

OTHERS RECEIVING VOTES: Valparaiso 62, Wisconsin Milwaukee 45, Davidson 44, Coastal Carolina 31, Missouri State 25, Robert Morris 24, Lamar 24, Norfolk State 15, Youngstown State 14, South Dakota State 12, Wagner 11, Butler 10, Fairfield 10, Ball State 9, North Dakota State 9, Lehigh 8, Buffalo 5, Drake 5, Elon 3, Oral Roberts 3, Georgia State 2, Akron 1, Columbia 1, Mercer 1, Santa Clara 1, Utah Valley 1, Yale 1.

BROWN TABBED PRESEASON ALL-SUN BELT

Senior guard Fred Brown has picked up plenty of preseason accolades as he was named to virtually everyone's preseason All-Sun Belt team. Brown was chosen to All-Sun Belt Third Team by the conference coaches and College Sports Madness. Brown was also picked as one of the top five players in the Sun Belt by Jon Teitel of collegehoops.net.

BROWN, MINGO NAMED TEAM CAPTAINS

Head Coach Keith Richard named seniors Fred Brown and Hugh Mingo team captains for the 2011-12 season. Brown and Mingo are the two leading returning scorers from last season. They combined to make 58 starts and averaged over 32 minutes per game a year ago.

WARHAWKS PICKED SIXTH IN SUN BELT WEST DIVISION

ULM was picked to finish sixth in the West Division of the Sun Belt by its conference coaches. Arkansas State received 64 points and was picked to win the West, followed by UL-Lafayette (60), North Texas (50), Denver (40), UALR (26) and ULM (12).

Florida Atlantic got all but one first-place vote to earn the top spot in the East Division. The Owls were followed by Middle Tennessee (59), Western Kentucky (41), South Alabama (33), FIU (31) and Troy (17).

FANT-EWING COURT GETS NEW LOOK

The court inside Fant-Ewing Coliseum will have a new look to it when the ULM men's and women's basketball teams begin play in November.

The court has been redesigned and repainted with a fresh look, which includes the primary ULM logo at center court and "Warhawks" on each baseline. It is the first major renovation to the court since the fall of 2006.

The redesign also accommodates the new women's 3-point line, which moves back a foot to 20 feet, 9 inches (the same as the men) and the addition of the charge circle underneath each basket.

Fant-Ewing Coliseum has received several upgrades since 2009, including a new scoreboard and new scorer's tables.

MISC. STATS

| | |
|--|--|
| Largest halftime lead..... | 2, at Nicholls State (11/28/11) |
| Largest halftime deficit..... | 22, at Ole Miss (11/11/11) |
| Largest halftime lead surrendered to lose..... | n/a |
| Largest halftime deficit overcome to win..... | n/a |
| Largest lead at any time..... | 21, at Nicholls State (11/28/11) |
| Largest deficit at any time..... | 26, at Ole Miss (11/11/11) |
| Largest lead surrendered to lose..... | 8, at Mississippi State (11/21/11) |
| Largest deficit overcome to win..... | 6, at Nicholls State (11/28/11) |
| Largest margin of victory..... | 21, at Nicholls State (11/28/11) |
| Largest margin of defeat..... | 23, at Tennessee (11/16/11) |
| Most points scored in a half..... | 50 (second half), at Nicholls State (11/28/11) |
| Fewest points scored in a half..... | 11, at Ole Miss (11/11/11) |
| Most points allowed in a half..... | 52, at Tennessee (11/16/11) |
| Fewest points allowed in a half..... | 24, at Southeastern La. (11/19/11) |



2011-12 ROSTER

NUMERICAL ROSTER

| ## | Name | Pos. | Cl. | Ht. | Wt. | Hometown (Previous School) |
|----|-----------------------|------|-----|------|-----|---------------------------------------|
| 3 | Marcelis Hansberry | G | So. | 6-0 | 180 | Jackson, Miss. (Provine HS) |
| 4 | R.J. McCray | G | So. | 6-2 | 180 | Arlington, Texas (Grace Prep Academy) |
| 5 | Christian Bibi Ndongo | F | Sr. | 6-8 | 195 | Yaounde, Cameroon (John Wood CC) |
| 10 | Trent Mackey | G | Fr. | 6-3 | 180 | Tampa, Fla. (Newsome HS) |
| 11 | Charles Winborne | G | So. | 6-1 | 185 | Shreveport, La. (Loyola-Chicago) |
| 14 | Ife Eke* | F | So. | 6-7 | 210 | Lagos, Nigeria (Northwest Rankin HS) |
| 15 | Steven McClellan | C | So. | 6-7 | 250 | Fresno, Calif. (Edison HS) |
| 23 | Reginald Smith | G | Fr. | 6-0 | 160 | Columbia, La. (Caldwell HS) |
| 24 | Hugh Mingo | G | Sr. | 6-3 | 175 | West Monroe, La. (South Plains CC) |
| 33 | D'Andre Martin | G | Fr. | 6-2 | 195 | Monroe, La. (Richwood HS) |
| 35 | Trey Lindsey | F | Fr. | 6-6 | 205 | Austin, Texas (Bowie HS) |
| 41 | Fabio Ribeiro | C | Sr. | 6-10 | 250 | Caetopolis, Brazil (New Mexico JC) |
| 55 | Fred Brown | G | Sr. | 6-2 | 190 | West Palm Beach, Fla. (Kansas State) |

*Will redshirt during the 2011-12 season

ALPHABETICAL ROSTER

| ## | Name | Pos. | Cl. | Ht. | Wt. | Hometown (Previous School) |
|----|-----------------------|------|-----|------|-----|---------------------------------------|
| 5 | Christian Bibi Ndongo | F | Sr. | 6-8 | 195 | Yaounde, Cameroon (John Wood CC) |
| 55 | Fred Brown | G | Sr. | 6-2 | 190 | West Palm Beach, Fla. (Kansas State) |
| 14 | Ife Eke* | F | So. | 6-7 | 210 | Lagos, Nigeria (Northwest Rankin HS) |
| 3 | Marcelis Hansberry | G | So. | 6-0 | 180 | Jackson, Miss. (Provine HS) |
| 35 | Trey Lindsey | F | Fr. | 6-6 | 205 | Austin, Texas (Bowie HS) |
| 10 | Trent Mackey | G | Fr. | 6-3 | 180 | Tampa, Fla. (Newsome HS) |
| 33 | D'Andre Martin | G | Fr. | 6-2 | 195 | Monroe, La. (Richwood HS) |
| 15 | Steven McClellan | C | So. | 6-7 | 250 | Fresno, Calif. (Edison HS) |
| 4 | R.J. McCray | G | So. | 6-2 | 180 | Arlington, Texas (Grace Prep Academy) |
| 24 | Hugh Mingo | G | Sr. | 6-3 | 175 | West Monroe, La. (South Plains CC) |
| 41 | Fabio Ribeiro | C | Sr. | 6-10 | 250 | Caetopolis, Brazil (New Mexico JC) |
| 23 | Reginald Smith | G | Fr. | 6-0 | 160 | Columbia, La. (Caldwell HS) |
| 11 | Charles Winborne | G | So. | 6-1 | 185 | Shreveport, La. (Loyola-Chicago) |

*Will redshirt during the 2011-12 season

COACHING STAFF

Head Coach: Keith Richard, second season at ULM

Assistant Coach: Cord Wright, second season at ULM

Assistant Coach: Brandon Roberts, second season at ULM

PRONUNCIATION

| | |
|------------------------------|-------------|
| Keith RICHARD | Re-CHARD |
| Christian BIBI NDONGO | be-be-DONGO |
| IFE EKE | if-E E-kay |
| Fabio RIBEIRO | rib-ARROW |
| D'ANDRE Martin | DEE-on-dre |

BY CLASS

| | |
|------------------|-----------------------|
| Seniors | Fred Brown |
| | Hugh Mingo |
| | Fabio Ribeiro |
| | Christain Bibi Ndongo |
| Sophomores | Marcelis Hansberry |
| | R.J. McCray |
| | Charles Winborne |
| | Ife Eke |
| | Steven McClellan |
| Freshman | Trent Mackey |
| | Reginald Smith |
| | D'Andre Martin |
| | Trey Lindsey |

BY POSITION

| | |
|---------------|-----------------------|
| Guard | Marcelis Hansberry |
| | R.J. McCray |
| | Trent Mackey |
| | Charles Winborne |
| | Reginald Smith |
| | Hugh Mingo |
| | D'Andre Martin |
| | Fred Brown |
| Forward | Christian Bibi Ndongo |
| | Ife Eke |
| | Trey Lindsey |
| Center | Steven McClellan |
| | Fabio Ribeiro |

BY HEIGHT

| | |
|------------|-----------------------|
| 6-0 | Reginald Smith |
| | Marcelis Hansberry |
| 6-1 | Charles Winborne |
| 6-2 | Fred Brown |
| | R.J. McCray |
| | D'Andre Martin |
| 6-3 | Hugh Mingo |
| | Trent Mackey |
| 6-6 | Trey Lindsey |
| 6-7 | Steven McClellan |
| | Ife Eke |
| 6-8 | Christian Bibi Ndongo |
| 6-10 | Fabio Ribeiro |

BY STATE

| | |
|-------------------|-----------------------|
| Louisiana | Charles Winborne |
| | Reginald Smith |
| | Hugh Mingo |
| | D'Andre Martin |
| Texas | R.J. McCray |
| | Trey Lindsey |
| Mississippi | Marcelis Hansberry |
| | Ife Eke |
| Florida | Fred Brown |
| | Trent Mackey |
| California | Steven McClellan |
| Brazil | Fabio Ribeiro |
| Cameroon | Christian Bibi Ndongo |



HEAD COACH KEITH RICHARD

Keith Richard returned to his alma mater to become ULM's seventh men's basketball head coach on April 22, 2010. Now in his second season, Richard seeks to restore the rich tradition of the ULM men's basketball program — something he knows very well.

Richard became the second ULM men's basketball coach — joining Mike Vining — to have also been a student-athlete and an assistant coach for the program. He was with the Warhawks in both capacities for six of the program's seven NCAA Tournament appearances in the 80s and 90s.

The Warhawks finished 7-24 in Richard's first season that was plagued by scholarship limits and youth. Despite the record, the Warhawks were competitive, losing seven games by six points or less. The season highlight came in an 82-75 victory at North Texas in the final week of the regular season. The Warhawks also took down Big Sky Tournament champion Northern Colorado 78-75 in Fant-Ewing Coliseum on Dec. 22.

As a student-athlete, Richard bridged the transition from Lenny Fant to Benny Hollis to Vining. He played on Fant's final team, played two seasons for Hollis and then completed his playing career on Vining's first team. ULM won three Trans-America Athletic Conference championships during his four years and advanced to the NCAA Tournament in 1982, the school's first-ever appearance, and the NIT in 1979. He twice led the team in assists and was team captain in 1980-81 and 1981-82.

Following his playing career, Richard spent two seasons as a graduate assistant at ULM (1984-86), assisting as his alma mater won the Southland Conference regular season and tournament titles in 1985, earning a trip to the NCAA Tournament.

Richard moved on to Marshall University for three years from 1986-89, helping the Thundering Herd win two Southern Conference crowns and a Southern Conference tournament title. Marshall participated in the 1987 NCAA Tournament and the 1988 NIT while Richard was on staff.

He returned to ULM for the 1989-90 season, spending five seasons as an assistant coach. In those five years, ULM won four Southland Conference regular season championships, four Southland Conference tournaments and made four appearances in the NCAA Tournament (1990, 1991, 1993, 1994). He departed in 1994 to join the staff at Louisiana Tech.

In his first season at Louisiana Tech, Richard helped the Bulldogs to the second biggest turnaround in the nation as they won 14 games after winning just two in the season prior to his arrival.

The following year Richard was promoted from assistant coach to associate head coach, spending three seasons in that capacity. He helped the Bulldogs reach the championship game of the Sun Belt Tournament in 1997, the school's first appearance in five seasons.

Richard became the head coach at Louisiana Tech prior to the 1998-99 season, guiding the Bulldogs for nine seasons. In his time at the helm of Louisiana Tech, Richard compiled a record of 150-117, the third-most wins in school history. In nine seasons, Richard had 11 players named all-conference, including three-time NCAA rebounding champion Paul Millsap, who went on to be drafted by the Utah Jazz. This season, Millsap will begin his fifth year with the Jazz.

During Richard's tenure at Louisiana Tech, the Bulldogs went on the road and won money games against the likes of Auburn, Baylor, Memphis (coached by John Calipari) and Texas Tech (coached by Bob Knight).

In his first season as head coach, Louisiana Tech won the Sun Belt regular season championship. Richard was named Sun Belt Conference Coach of the Year and two players, Lonnie Cooper and Craig Jackson, earned all-conference accolades.

The next year, Richard guided Louisiana Tech to a 21-win season, the school's first of three 20-plus win seasons under Richard. Gerrod Henderson and Jackson earned All-Sun Belt honors that year, with Henderson named the Sun Belt's Most Valuable Player.

In 2001-02, Louisiana Tech moved from the Sun Belt into the Western Athletic Conference, where Richard immediately turned the Bulldogs into a contender for the conference crown, posting a 22-10 overall record, 14-4 in conference play. Led by Henderson, who earned All-WAC honors, Richard's Bulldogs earned a berth in the NIT, where they defeated Louisiana-Lafayette and Vanderbilt before falling to Villanova.

Richard took the Bulldogs to the postseason again during the 2005-06 season as Louisiana Tech won 20 games and earned a trip to the NIT. That year, Millsap was named as an All-WAC performer for the third consecutive season while also leading the nation in rebounding for the third-straight season.

In nine years as the head coach at Louisiana Tech, Richard's teams posted a conference record of 90-60, going 32-14 in three seasons in Sun Belt and 58-46 in six years in the WAC. At ULM, Richard returns to the Sun Belt where he currently stands as the league's 10th winningest coach in conference games, with a .696 winning percentage.

Prior to returning to guide his alma mater, Richard spent the past two seasons as an assistant coach at LSU, where he helped the Tigers win the 2008-09 SEC regular season championship and reach the second round of the NCAA Tournament before losing to eventual national champion North Carolina.



THE RICHARD FILE

8-33 Record at ULM (second season)
158-150 Career Record (11th season)

COACHING HONORS

1999 Sun Belt Coach of the Year

Has been part of the coaching staff for seven NCAA Tournament and three NIT teams

COACHING CAREER

| Season | School | Position | Record/Postseason |
|---------|----------------|----------------------|-------------------|
| 1984-85 | ULM | Graduate Assistant | 17-12 |
| 1985-86 | ULM | Graduate Assistant | 20-10/NCAA |
| 1986-87 | Marshall | Assistant Coach | 25-6/NCAA |
| 1987-88 | Marshall | Assistant Coach | 24-8/NIT |
| 1988-89 | Marshall | Assistant Coach | 15-15 |
| 1989-90 | ULM | Assistant Coach | 22-8/NCAA |
| 1990-91 | ULM | Assistant Coach | 25-8/NCAA |
| 1991-92 | ULM | Assistant Coach | 19-10/NCAA |
| 1992-93 | ULM | Assistant Coach | 26-5/NCAA |
| 1993-94 | ULM | Assistant Coach | 19-9 |
| 1994-95 | Louisiana Tech | Assistant Coach | 14-13 |
| 1995-96 | Louisiana Tech | Associate Head Coach | 11-17 |
| 1996-97 | Louisiana Tech | Associate Head Coach | 15-14 |
| 1997-98 | Louisiana Tech | Associate Head Coach | 12-15 |
| 1998-99 | Louisiana Tech | Head Coach | 19-9 |
| 1999-00 | Louisiana Tech | Head Coach | 21-8 |
| 2000-01 | Louisiana Tech | Head Coach | 17-12 |
| 2001-02 | Louisiana Tech | Head Coach | 22-10/NIT |
| 2002-03 | Louisiana Tech | Head Coach | 12-15 |
| 2003-04 | Louisiana Tech | Head Coach | 15-15 |
| 2004-05 | Louisiana Tech | Head Coach | 14-15 |
| 2005-06 | Louisiana Tech | Head Coach | 20-13/NIT |
| 2006-07 | Louisiana Tech | Head Coach | 10-20 |
| 2008-09 | LSU | Assistant Coach | 27-8/NCAA |
| 2009-10 | LSU | Assistant Coach | 11-20 |
| 2010-11 | ULM | Head Coach | 7-24 |
| 2011-12 | ULM | Head Coach | 1-9 |

PLAYING CAREER

Played for ULM from 1978-82; Coached by Lenny Fant, Benny Hollis & Mike Vining

1979 Atlantic Sun Tournament Champions, NIT

1980 Atlantic Sun Regular Season Champions

1982 Atlantic Sun Tournament Champions, NCAA

Two-time team captain ('81 & '82)

Led team in assists twice



2011-12 ULM Men's Basketball
ULM Combined Team Statistics (as of Dec 13, 2011)
All games

| RECORD: | OVERALL | HOME | AWAY | NEUTRAL |
|----------------|----------------|-------------|-------------|----------------|
| ALL GAMES | 1-9 | 0-4 | 1-5 | 0-0 |
| CONFERENCE | 0-0 | 0-0 | 0-0 | 0-0 |
| NON-CONFERENCE | 1-9 | 0-4 | 1-5 | 0-0 |

| # | Player | gp-gs | min | avg | Total | | 3-Point | | F-Throw | | Rebounds | | | | | | | | | | | |
|----|----------------------|-------|------|------|---------|------|---------|------|---------|-------|----------|-----|-----|------|-----|----|-----|-----|-----|-----|-----|------|
| | | | | | fg-fga | fg% | 3fg-fga | 3fg% | ft-fa | ft% | off | def | tot | avg | pf | dq | a | to | blk | stl | pts | avg |
| 55 | Brown, Fred | 10-8 | 281 | 28.1 | 48-122 | .393 | 22-53 | .415 | 20-25 | .800 | 9 | 17 | 26 | 2.6 | 16 | 1 | 23 | 24 | 0 | 12 | 138 | 13.8 |
| 11 | Winborne, Charles | 10-8 | 276 | 27.6 | 44-92 | .478 | 21-47 | .447 | 15-20 | .750 | 4 | 21 | 25 | 2.5 | 13 | 0 | 28 | 12 | 1 | 2 | 124 | 12.4 |
| 24 | Mingo, Hugh | 10-6 | 211 | 21.1 | 32-77 | .416 | 6-19 | .316 | 7-12 | .583 | 10 | 35 | 45 | 4.5 | 22 | 0 | 13 | 12 | 3 | 3 | 77 | 7.7 |
| 10 | Mackey, Trent | 10-6 | 223 | 22.3 | 24-54 | .444 | 16-40 | .400 | 4-4 | 1.000 | 3 | 13 | 16 | 1.6 | 17 | 0 | 14 | 14 | 0 | 3 | 68 | 6.8 |
| 03 | Hansberry, Marcellis | 10-4 | 220 | 22.0 | 25-66 | .379 | 2-16 | .125 | 10-17 | .588 | 6 | 19 | 25 | 2.5 | 16 | 0 | 20 | 10 | 1 | 7 | 62 | 6.2 |
| 15 | McClellan, Steven | 3-2 | 60 | 20.0 | 7-16 | .438 | 0-0 | .000 | 3-4 | .750 | 7 | 13 | 20 | 6.7 | 12 | 2 | 0 | 4 | 2 | 3 | 17 | 5.7 |
| 41 | Ribeiro, Fabio | 10-6 | 213 | 21.3 | 20-53 | .377 | 0-0 | .000 | 7-11 | .636 | 15 | 38 | 53 | 5.3 | 19 | 0 | 4 | 16 | 3 | 3 | 47 | 4.7 |
| 05 | Bibi Ndongo, C. | 8-5 | 154 | 19.3 | 10-23 | .435 | 1-3 | .333 | 11-18 | .611 | 8 | 16 | 24 | 3.0 | 22 | 0 | 2 | 4 | 9 | 4 | 32 | 4.0 |
| 35 | Lindsey, Trey | 10-4 | 203 | 20.3 | 12-27 | .444 | 4-13 | .308 | 6-8 | .750 | 5 | 21 | 26 | 2.6 | 33 | 3 | 12 | 9 | 0 | 5 | 34 | 3.4 |
| 04 | McCray, R.J. | 10-1 | 150 | 15.0 | 14-25 | .560 | 1-5 | .200 | 3-7 | .429 | 2 | 11 | 13 | 1.3 | 8 | 0 | 11 | 10 | 2 | 3 | 32 | 3.2 |
| 23 | Smith, Reginald | 2-0 | 3 | 1.5 | 0-0 | .000 | 0-0 | .000 | 0-0 | .000 | 0 | 0 | 0 | 0.0 | 0 | 0 | 0 | 0 | 0 | 0 | 0 | 0.0 |
| 33 | Martin, D'Andre | 3-0 | 6 | 2.0 | 0-2 | .000 | 0-0 | .000 | 0-0 | .000 | 0 | 0 | 0 | 0.0 | 1 | 0 | 0 | 3 | 0 | 1 | 0 | 0.0 |
| | Team | | | | | | | | | | 15 | 20 | 35 | | | | 4 | | | | | |
| | Total..... | 10 | 2000 | | 236-557 | .424 | 73-196 | .372 | 86-126 | .683 | 84 | 224 | 308 | 30.8 | 179 | 6 | 127 | 122 | 21 | 46 | 631 | 63.1 |
| | Opponents..... | 10 | 2000 | | 248-542 | .458 | 78-212 | .368 | 141-194 | .727 | 96 | 252 | 348 | 34.8 | 133 | - | 149 | 109 | 40 | 58 | 715 | 71.5 |

| TEAM STATISTICS | ULM | OPP | Date | Opponent | Score | Att. |
|------------------------|---------|---------|---------------------|----------------------|---------|-------|
| SCORING | 631 | 715 | 11/11/11 | at Ole Miss | L 38-60 | 5729 |
| Points per game | 63.1 | 71.5 | 11/14/11 | INDIANA STATE | L 59-71 | 1236 |
| Scoring margin | -8.4 | - | 11/16/11 | at Tennessee | L 62-85 | 14751 |
| FIELD GOALS-ATT | 236-557 | 248-542 | 11/19/11 | at Southeastern La. | L 60-63 | 877 |
| Field goal pct | .424 | .458 | 11-21-11 | at Mississippi State | L 63-78 | 7547 |
| 3 POINT FG-ATT | 73-196 | 78-212 | 11/26/11 | HARDING | L 68-71 | 883 |
| 3-point FG pct | .372 | .368 | 11/28/11 | at Nicholls State | W 86-65 | 574 |
| 3-pt FG made per game | 7.3 | 7.8 | 12/03/11 | LOUISIANA TECH | L 71-73 | 2013 |
| FREE THROWS-ATT | 86-126 | 141-194 | 12/10/11 | at Texas A&M | L 54-67 | 6875 |
| Free throw pct | .683 | .727 | 12/12/11 | NICHOLLS STATE | L 70-82 | 1164 |
| F-Throws made per game | 8.6 | 14.1 | * - Conference game | | | |
| REBOUNDS | 308 | 348 | | | | |
| Rebounds per game | 30.8 | 34.8 | | | | |
| Rebounding margin | -4.0 | - | | | | |
| ASSISTS | 127 | 149 | | | | |
| Assists per game | 12.7 | 14.9 | | | | |
| TURNOVERS | 122 | 109 | | | | |
| Turnovers per game | 12.2 | 10.9 | | | | |
| Turnover margin | -1.3 | - | | | | |
| Assist/turnover ratio | 1.0 | 1.4 | | | | |
| STEALS | 46 | 58 | | | | |
| Steals per game | 4.6 | 5.8 | | | | |
| BLOCKS | 21 | 40 | | | | |
| Blocks per game | 2.1 | 4.0 | | | | |
| ATTENDANCE | 5296 | 36353 | | | | |
| Home games-Avg/Game | 4-1324 | 6-6059 | | | | |
| Neutral site-Avg/Game | - | 0-0 | | | | |

| Score by Periods | 1st | 2nd | Totals |
|------------------|-----|-----|--------|
| ULM | 264 | 367 | 631 |
| Opponents | 351 | 364 | 715 |



INSIDE THE NUMBERS

ULM BASKETBALL STATISTICAL BREAKDOWN

| TEAM | GAMES | FG-FGA | PCT. | 3F-3PA | PCT. | FT-FTA | PCT. | O-D | TOT | AVG. | FOUL | DQ | AST | AVG | TO | BLK | STL | PTS | AVG |
|----------------|-------|---------|------|--------|------|--------|------|--------|-----|------|------|----|-----|------|-----|-----|-----|-----|------|
| OVERALL (1-9) | 10 | 236-557 | .424 | 73-196 | .372 | 86-126 | .683 | 84-224 | 308 | 30.8 | 179 | 6 | 127 | 12.7 | 122 | 21 | 46 | 631 | 63.1 |
| HOME (0-4) | 4 | 95-236 | .403 | 34-82 | .415 | 44-60 | .733 | 42-93 | 135 | 33.8 | 76 | 4 | 52 | 13.0 | 51 | 11 | 13 | 268 | 67.0 |
| AWAY (1-5) | 6 | 141-321 | .439 | 39-114 | .342 | 42-66 | .636 | 42-131 | 173 | 28.8 | 103 | 2 | 75 | 12.5 | 71 | 10 | 33 | 363 | 60.5 |
| NEUTRAL | | | | | | | | | | | | | | | | | | | |
| NON-CONF (1-9) | 10 | 236-557 | .424 | 73-196 | .372 | 86-126 | .683 | 84-224 | 308 | 30.8 | 179 | 6 | 127 | 12.7 | 122 | 21 | 46 | 631 | 63.1 |
| CONFERENCE | | | | | | | | | | | | | | | | | | | |

INSIDE THE NUMBERS

| RECORD BY VENUE | 2011-12 Overall | 2011-12 Sun Belt | 2010-11 Overall | 2010-11 Sun Belt |
|----------------------------|--------------------|---------------------|--------------------|---------------------|
| Overall | 1-9 | | 7-24 | 2-14 |
| Home (Fant-Ewing Coliseum) | 0-4 | | 4-9 | 0-8 |
| Away | 1-5 | | 2-13 | 2-6 |
| Neutral | | | 1-2 | 0-0 |

| RECORD BY HALFTIME | 2011-12 Overall | 2011-12 Sun Belt | 2010-11 Overall | 2010-11 Sun Belt |
|------------------------------|--------------------|---------------------|--------------------|---------------------|
| When ULM leads at halftime | 1-0 | | 5-3 | 0-2 |
| When ULM trails at halftime | 0-8 | | 1-21 | 1-12 |
| When ULM is tied at halftime | 0-1 | | 1-0 | 1-0 |

| RECORD BY SCORING OFFENSE | 2011-12 Overall | 2011-12 Sun Belt | 2010-11 Overall | 2010-11 Sun Belt |
|------------------------------|--------------------|---------------------|--------------------|---------------------|
| When ULM scores 100+ points | | | 0-0 | 0-0 |
| When ULM scores 90-99 points | | | 0-0 | 0-0 |
| When ULM scores 80-89 points | 1-0 | | 2-0 | 1-0 |
| When ULM scores 70-79 points | 0-2 | | 2-2 | 0-2 |
| When ULM scores 60-69 points | 0-4 | | 2-8 | 1-5 |
| When ULM scores 50-59 points | 0-2 | | 1-9 | 0-5 |
| When ULM scores 40-49 points | | | 0-3 | 0-1 |
| When ULM scores 30-39 points | 0-1 | | 0-2 | 0-1 |

| RECORD BY SCORING DEFENSE | 2011-12 Overall | 2011-12 Sun Belt | 2010-11 Overall | 2010-11 Sun Belt |
|-----------------------------------|--------------------|---------------------|--------------------|---------------------|
| When opponent scores 100+ points | | | 0-0 | 0-0 |
| When opponent scores 90-99 points | | | 0-0 | 0-0 |
| When opponent scores 80-89 points | 0-2 | | 0-5 | 0-4 |
| When opponent scores 70-79 points | 0-4 | | 2-5 | 1-3 |
| When opponent scores 60-69 points | 1-3 | | 2-13 | 1-7 |
| When opponent scores 50-59 points | | | 2-1 | 0-0 |
| When opponent scores 40-49 points | | | 1-0 | 0-0 |

| OVERTIME RECORD | 2011-12 Overall | 2011-12 Sun Belt | 2010-11 Overall | 2010-11 Sun Belt |
|-----------------|--------------------|---------------------|--------------------|---------------------|
| Overtime | | | 0-0 | 0-0 |
| Double Overtime | | | 0-0 | 0-0 |
| Triple Overtime | | | 0-0 | 0-0 |

| RECORD BY MONTH | 2011-12 Overall | 2011-12 Sun Belt | 2010-11 Overall | 2010-11 Sun Belt |
|-----------------|--------------------|---------------------|--------------------|---------------------|
| November | 1-6 | | 2-5 | 0-0 |
| December | 0-3 | | 2-5 | 0-1 |
| January | | | 2-7 | 1-7 |
| February | | | 1-6 | 1-6 |
| March | | | 0-1 | 0-0 |

INSIDE THE NUMBERS

| FIELD GOAL PERCENTAGE | 2011-12 | 2010-11 |
|------------------------------------|---------|---------|
| When ULM leads in FG%, ULM is | 1-0 | 4-1 |
| When opponent leads in FG%, ULM is | 0-9 | 3-22 |
| When game ends tied in FG%, ULM is | | 0-0 |

| 3-POINT FIELD GOAL PERCENTAGE | 2011-12 | 2010-11 |
|-------------------------------------|---------|---------|
| When ULM leads in 3FG%, ULM is | 1-6 | 4-7 |
| When opponent leads in 3FG%, ULM is | 0-3 | 3-16 |
| When game ends tied in 3FG%, ULM is | | 0-0 |

| FREE THROW PERCENTAGE | 2011-12 | 2010-11 |
|------------------------------------|---------|---------|
| When ULM leads in FT%, ULM is | 0-5 | 6-6 |
| When opponent leads in FT%, ULM is | 1-4 | 1-16 |
| When game ends tied in FT%, ULM is | | 0-1 |

| REBOUNDING | 2011-12 | 2010-11 |
|---|---------|---------|
| When ULM leads in rebounds, ULM is | 1-2 | 3-9 |
| When opponent leads in rebounds, ULM is | 0-7 | 5-8 |
| When game ends tied in rebounds, ULM is | | 2-1 |

| ASSISTS | 2011-12 | 2010-11 |
|--|---------|---------|
| When ULM leads in assists, ULM is | 1-2 | 4-1 |
| When opponent leads in assists, ULM is | 0-7 | 2-20 |
| When game ends tied in assists, ULM is | | 1-2 |

| BLOCKS | 2011-12 | 2010-11 |
|---------------------------------------|---------|---------|
| When ULM leads in blocks, ULM is | 1-1 | 3-6 |
| When opponent leads in blocks, ULM is | 0-7 | 3-13 |
| When game ends tied in blocks, ULM is | 0-1 | 1-4 |

| STEALS | 2011-12 | 2010-11 |
|---------------------------------------|---------|---------|
| When ULM leads in steals, ULM is | 0-2 | 4-8 |
| When opponent leads in steals, ULM is | 0-7 | 1-12 |
| When game ends tied in steals, ULM is | 1-0 | 2-3 |

| TURNOVERS | 2011-12 | 2010-11 |
|--|---------|---------|
| When ULM has more turnovers, ULM is | 1-5 | 2-16 |
| When opponent has more turnovers, ULM is | 0-3 | 5-4 |
| When game ends tied in turnovers, ULM is | 0-1 | 0-3 |

| FOULS | 2011-12 | 2010-11 |
|--------------------------------------|---------|---------|
| When ULM has more fouls, ULM is | 1-7 | 4-16 |
| When opponent has more fouls, ULM is | 0-1 | 3-6 |
| When game ends tied in fouls, ULM is | 0-1 | 0-1 |



WARHAWK STARTING LINE-UPS

| Date | Opponent | W/L | Score | Starter | Total | Starter | Total | Starter | Total | Starter | Total | Starter | Total |
|------|---------------------------|-----|-------|-------------|-------|-------------|-------|----------|-------|----------|-------|---------|-------|
| N11 | at Ole Miss | L | 38-60 | Bibi Ndongo | 4 | Ribeiro | 5 | Winborne | 6 | Mingo | 2 | Brown | 7 |
| N14 | INDIANA STATE | L | 59-71 | Lindsey | 3 | Ribeiro | 6 | Mackey | 8 | Mingo | 6 | Brown | 15 |
| N16 | at Tennessee | L | 62-85 | Lindsey | 4 | Ribeiro | 8 | Mackey | 6 | Winborne | 6 | Brown | 18 |
| N19 | at Southeastern Louisiana | L | 60-63 | Bibi Ndongo | 5 | McCray | 5 | Mackey | 2 | Mingo | 2 | Brown | 16 |
| N21 | at Mississippi State | L | 63-78 | Hansberry | 13 | Ribeiro | 2 | Mackey | 5 | Winborne | 9 | Brown | 21 |
| N26 | HARDING | L | 68-71 | Hansberry | 6 | Ribeiro | 4 | Mingo | 0 | Winborne | 18 | Brown | 17 |
| N28 | at Nicholls State | W | 86-65 | Hansberry | 9 | Bibi Ndongo | 4 | Mackey | 12 | Winborne | 19 | Lindsey | 2 |
| D3 | LOUISIANA TECH | L | 71-73 | Hansberry | 6 | Ribeiro | 2 | Mackey | 9 | Winborne | 15 | Lindsey | 4 |
| D10 | at Texas A&M | L | 54-67 | Bibi Ndongo | 4 | McClellan | 4 | Mingo | 21 | Winborne | 4 | Brown | 7 |
| D12 | NICHOLLS STATE | L | 70-82 | Bibi Ndongo | 0 | McClellan | 7 | Mingo | 11 | Winborne | 20 | Brown | 5 |
| D15 | NORTHWESTERN STATE | | | | | | | | | | | | |
| D19 | at UNLV | | | | | | | | | | | | |
| D21 | at Indiana State | | | | | | | | | | | | |
| D29 | WESTERN KENTUCKY* | | | | | | | | | | | | |
| D31 | ARKANSAS STATE* | | | | | | | | | | | | |
| J5 | at Florida Atlantic* | | | | | | | | | | | | |
| J7 | at FIU* | | | | | | | | | | | | |
| J12 | UALR* | | | | | | | | | | | | |
| J14 | NORTH TEXAS* | | | | | | | | | | | | |
| J19 | DENVER* | | | | | | | | | | | | |
| J21 | at Troy* | | | | | | | | | | | | |
| J28 | UL-LAFAYETTE* | | | | | | | | | | | | |
| F2 | at Arkansas State* | | | | | | | | | | | | |
| F4 | at UALR* | | | | | | | | | | | | |
| F11 | SOUTH ALABAMA* | | | | | | | | | | | | |
| F16 | at North Texas* | | | | | | | | | | | | |
| F18 | at Denver* | | | | | | | | | | | | |
| F23 | MIDDLE TENNESSEE* | | | | | | | | | | | | |
| F25 | at UL-Lafayette* | | | | | | | | | | | | |

STARTERS VS. BENCH

| Date | Opponent | W/L | Score | Starter Points | | | Bench Points | | |
|-----------------|---------------------------|-----|-------|----------------|-------------|--------------|--------------|-------------|------------|
| | | | | ULM | Opp. | Diff. | ULM | Opp. | Diff. |
| N11 | at Ole Miss | L | 38-60 | 24 | 52 | -28 | 14 | 8 | 6 |
| N14 | INDIANA STATE | L | 59-71 | 38 | 56 | -18 | 21 | 15 | 6 |
| N16 | at Tennessee | L | 62-85 | 42 | 52 | -10 | 20 | 33 | -13 |
| N19 | at Southeastern Louisiana | L | 60-63 | 30 | 62 | -32 | 30 | 1 | 29 |
| N21 | at Mississippi State | L | 63-78 | 50 | 70 | -20 | 13 | 8 | 5 |
| N26 | HARDING | L | 68-71 | 45 | 43 | 2 | 23 | 28 | -5 |
| N28 | at Nicholls State | W | 86-65 | 46 | 43 | 3 | 40 | 22 | 18 |
| D3 | LOUISIANA TECH | L | 71-73 | 36 | 35 | 1 | 35 | 38 | -3 |
| D10 | at Texas A&M | L | 54-67 | 40 | 58 | -18 | 14 | 9 | 5 |
| D12 | NICHOLLS STATE | L | 70-82 | 43 | 59 | -16 | 27 | 23 | 4 |
| D15 | NORTHWESTERN STATE | | | | | | | | |
| D19 | at UNLV | | | | | | | | |
| D21 | at Indiana State | | | | | | | | |
| D29 | WESTERN KENTUCKY* | | | | | | | | |
| D31 | ARKANSAS STATE* | | | | | | | | |
| J5 | at Florida Atlantic* | | | | | | | | |
| J7 | at FIU* | | | | | | | | |
| J12 | UALR* | | | | | | | | |
| J14 | NORTH TEXAS* | | | | | | | | |
| J19 | DENVER* | | | | | | | | |
| J21 | at Troy* | | | | | | | | |
| J28 | UL-LAFAYETTE* | | | | | | | | |
| F2 | at Arkansas State* | | | | | | | | |
| F4 | at UALR* | | | | | | | | |
| F11 | SOUTH ALABAMA* | | | | | | | | |
| F16 | at North Texas* | | | | | | | | |
| F18 | at Denver* | | | | | | | | |
| F23 | MIDDLE TENNESSEE* | | | | | | | | |
| F25 | at UL-Lafayette* | | | | | | | | |
| TOTALS | | | | 394 | 530 | -136 | 237 | 185 | 52 |
| AVERAGES | | | | 39.4 | 53.0 | -13.6 | 23.7 | 18.5 | 5.2 |



2010-11 RESULTS

| DATE | OPPONENT | RESULT | ATTENDANCE | TOP SCORER | REBOUNDS | ASSISTS | STEALS | BLOCKS |
|---------|---------------------------|----------|------------|---------------|-----------------------|--------------------|----------------------|-----------------|
| Nov. 11 | at Ole Miss | L, 38-60 | 5,729 | Brown (7) | Ribeiro (6) | Hansberry (4) | Four Players (1) | Two Players (1) |
| Nov. 14 | INDIANA STATE | L, 59-71 | 1,236 | Brown (15) | Brown (7) | Brown (5) | Bibi Ndongo (1) | Bibi Ndongo (2) |
| Nov. 16 | at Tennessee | L, 62-85 | 14,751 | Brown (18) | Ribeiro, Mingo (7) | Winborne (5) | Brown (2) | McCray (2) |
| Nov. 19 | at Southeastern Louisiana | L, 60-63 | 877 | Brown (16) | Hansberry (5) | Brown (6) | Brown (3) | Bibi Ndongo (1) |
| Nov. 21 | at Mississippi State | L, 63-78 | 4,892 | Brown (21) | Ribeiro, Mingo (5) | Mackey, McCray (3) | Brown, McCray (2) | Ribeiro (1) |
| Nov. 26 | HARDING | L, 68-71 | 883 | Winborne (18) | Bibi Ndongo (5) | Hansberry (5) | Hansberry (2) | Bibi Ndongo (4) |
| Nov. 28 | at Nicholls State | W, 86-65 | 574 | Winborne (19) | Ribeiro, Winborne (7) | McCray (4) | Three Players (1) | Bibi Ndongo (1) |
| Dec. 3 | LOUISIANA TECH | L, 71-73 | 2,013 | Brown (17) | Ribeiro (8) | Winborne (5) | Brown, Hansberry (1) | Two Players (1) |
| Dec. 10 | at Texas A&M | L, 54-67 | 6,875 | Mingo (21) | Mingo (9) | Mingo (5) | McClellan (3) | Ribeiro (1) |
| Dec. 12 | NICHOLLS STATE | L, 70-82 | 1,164 | Winborne (20) | McClellan (11) | Lindsey (4) | Mackey, Lindsey (1) | Two Players (1) |
| Dec. 15 | NORTHWESTERN STATE | | | | | | | |
| Dec. 19 | at UNLV | | | | | | | |
| Dec. 21 | at Indiana State | | | | | | | |
| Dec. 29 | WESTERN KENTUCKY* | | | | | | | |
| Dec. 31 | ARKANSAS STATE* | | | | | | | |
| Jan. 5 | at Florida Atlantic* | | | | | | | |
| Jan. 7 | at FIU* | | | | | | | |
| Jan. 12 | UALR* | | | | | | | |
| Jan. 14 | NORTH TEXAS* | | | | | | | |
| Jan. 19 | DENVER* | | | | | | | |
| Jan. 21 | at Troy* | | | | | | | |
| Jan. 28 | UL-LAFAYETTE* | | | | | | | |
| Feb. 2 | at Arkansas State* | | | | | | | |
| Feb. 4 | at UALR* | | | | | | | |
| Feb. 11 | SOUTH ALABAMA* | | | | | | | |
| Feb. 16 | at North Texas* | | | | | | | |
| Feb. 18 | at Denver* | | | | | | | |
| Feb. 23 | MIDDLE TENNESSEE* | | | | | | | |
| Feb. 25 | at UL-Lafayette* | | | | | | | |

* denotes Sun Belt Conference game

| RECORD | OVERALL | HOME | AWAY | NEUTRAL |
|----------------------|---------|------|------|---------|
| All Games | 1-9 | 0-4 | 1-5 | 0-0 |
| Sun Belt Games | 0-0 | 0-0 | 0-0 | 0-0 |
| Non-Conference Games | 1-9 | 0-4 | 1-5 | 0-0 |



POINTS, REBOUNDS, ASSISTS

| DATE | OPPONENT | RESULT | 3 • HANSBERRY | 4 • MCCRAY | 5 • BIBI NDONGO | 10 • MACKEY | 11 • WINBORNE | 15 • MCCLELLAN |
|---------|---------------------------|----------|---------------|------------|-----------------|-------------|---------------|----------------|
| Nov. 11 | at Ole Miss | L, 38-60 | 0-1-4 | 6-4-0 | 4-5-0 | 5-5-2 | 6-2-3 | DNP |
| Nov. 14 | INDIANA STATE | L, 59-71 | 5-0-0 | 4-3-0 | 0-2-1 | 8-2-0 | 12-0-1 | DNP |
| Nov. 16 | at Tennessee | L, 62-85 | 4-2-2 | 5-0-1 | DNP | 6-1-1 | 6-2-5 | DNP |
| Nov. 19 | at Southeastern Louisiana | L, 60-63 | 11-5-2 | 5-0-1 | 5-2-0 | 2-0-0 | 15-3-3 | DNP |
| Nov. 21 | at Mississippi State | L, 63-78 | 13-2-0 | 2-2-3 | DNP | 5-3-3 | 9-4-0 | DNP |
| Nov. 26 | HARDING | L, 68-71 | 6-3-5 | 2-0-0 | 5-5-1 | 13-1-3 | 18-0-4 | DNP |
| Nov. 28 | at Nicholls State | W, 86-65 | 9-3-1 | 2-0-4 | 4-2-0 | 12-0-0 | 19-7-2 | DNP |
| Dec. 3 | LOUISIANA TECH | L, 71-73 | 6-3-2 | 0-0-0 | 10-5-0 | 9-1-4 | 15-3-5 | 6-7-0 |
| Dec. 10 | at Texas A&M | L, 54-67 | 2-2-1 | 0-1-0 | 4-3-0 | 0-0-0 | 4-1-3 | 4-2-0 |
| Dec. 12 | NICHOLLS STATE | L, 70-82 | 6-4-3 | 6-3-2 | 0-0-0 | 8-3-1 | 20-3-2 | 7-11-0 |
| Dec. 15 | NORTHWESTERN STATE | | | | | | | |
| Dec. 19 | at UNLV | | | | | | | |
| Dec. 21 | at Indiana State | | | | | | | |
| Dec. 29 | WESTERN KENTUCKY* | | | | | | | |
| Dec. 31 | ARKANSAS STATE* | | | | | | | |
| Jan. 5 | at Florida Atlantic* | | | | | | | |
| Jan. 7 | at FIU* | | | | | | | |
| Jan. 12 | UALR* | | | | | | | |
| Jan. 14 | NORTH TEXAS* | | | | | | | |
| Jan. 19 | DENVER* | | | | | | | |
| Jan. 21 | at Troy* | | | | | | | |
| Jan. 28 | UL-LAFAYETTE* | | | | | | | |
| Feb. 2 | at Arkansas State* | | | | | | | |
| Feb. 4 | at UALR* | | | | | | | |
| Feb. 11 | SOUTH ALABAMA* | | | | | | | |
| Feb. 16 | at North Texas* | | | | | | | |
| Feb. 18 | at Denver* | | | | | | | |
| Feb. 23 | MIDDLE TENNESSEE* | | | | | | | |
| Feb. 25 | at UL-Lafayette* | | | | | | | |

| DATE | OPPONENT | RESULT | 23 • SMITH | 24 • MINGO | 33 • MARTIN | 35 • LINDSEY | 41 • RIBEIRO | 55 • BROWN |
|---------|---------------------------|----------|------------|------------|-------------|--------------|--------------|------------|
| Nov. 11 | at Ole Miss | L, 38-60 | DNP | 2-0-0 | DNP | 3-4-0 | 5-6-1 | 7-1-1 |
| Nov. 14 | INDIANA STATE | L, 59-71 | DNP | 6-5-0 | DNP | 3-6-2 | 6-4-1 | 15-7-5 |
| Nov. 16 | at Tennessee | L, 62-85 | 0-0-0 | 11-7-4 | 0-0-0 | 4-4-0 | 8-7-0 | 18-1-2 |
| Nov. 19 | at Southeastern Louisiana | L, 60-63 | DNP | 2-1-0 | DNP | 2-4-0 | 2-3-0 | 16-3-6 |
| Nov. 21 | at Mississippi State | L, 63-78 | 0-0-0 | 9-5-1 | DNP | 2-1-2 | 2-5-0 | 21-2-2 |
| Nov. 26 | HARDING | L, 68-71 | DNP | 0-1-0 | 0-0-0 | 3-2-1 | 4-4-0 | 17-1-1 |
| Nov. 28 | at Nicholls State | W, 86-65 | DNP | 13-4-1 | DNP | 2-3-3 | 10-7-1 | 15-3-3 |
| Dec. 3 | LOUISIANA TECH | L, 71-73 | DNP | 2-6-2 | DNP | 4-0-0 | 2-8-0 | 17-5-2 |
| Dec. 10 | at Texas A&M | L, 54-67 | DNP | 21-9-5 | DNP | 6-0-0 | 6-7-1 | 7-0-1 |
| Dec. 12 | NICHOLLS STATE | L, 70-82 | DNP | 11-7-0 | DNP | 5-2-4 | 2-2-0 | 5-3-0 |
| Dec. 15 | NORTHWESTERN STATE | | | | | | | |
| Dec. 19 | at UNLV | | | | | | | |
| Dec. 21 | at Indiana State | | | | | | | |
| Dec. 29 | WESTERN KENTUCKY* | | | | | | | |
| Dec. 31 | ARKANSAS STATE* | | | | | | | |
| Jan. 5 | at Florida Atlantic* | | | | | | | |
| Jan. 7 | at FIU* | | | | | | | |
| Jan. 12 | UALR* | | | | | | | |
| Jan. 14 | NORTH TEXAS* | | | | | | | |
| Jan. 19 | DENVER* | | | | | | | |
| Jan. 21 | at Troy* | | | | | | | |
| Jan. 28 | UL-LAFAYETTE* | | | | | | | |
| Feb. 2 | at Arkansas State* | | | | | | | |
| Feb. 4 | at UALR* | | | | | | | |
| Feb. 11 | SOUTH ALABAMA* | | | | | | | |
| Feb. 16 | at North Texas* | | | | | | | |
| Feb. 18 | at Denver* | | | | | | | |
| Feb. 23 | MIDDLE TENNESSEE* | | | | | | | |
| Feb. 25 | at UL-Lafayette* | | | | | | | |



GAME-BY-GAME TEAM STATISTICS

| DATE | GAME | W/L | SCORE | FG-FGA | PCT. | 3F-3PA | PCT. | FT-FTA | PCT. | O-D | TOT | F/EJ | A | TO | BLK | STL | 1ST | 2ND | OT | OT | TP |
|------|-----------------------------|-----|----------|----------------|--------------|---------------|--------------|----------------|---------------|----------------|----------|--------------|----------|----------|--------|--------|----------|----------|----|----|----------|
| N11 | ULM at Ole Miss | L | 38 60 | 14-49 19-57 | .286 .333 | 3-15 5-26 | .200 .192 | 7-18 17-27 | .389 .630 | 6-28 13-35 | 34 48 | 20/0 16/0 | 11 8 | 18 15 | 2 8 | 4 8 | 11 33 | 27 27 | - | - | 38 60 |
| N14 | ULM Indiana State | L | 59 71 | 21-57 27-60 | .368 .450 | 9-19 8-20 | .474 .400 | 8-10 9-11 | .800 .818 | 8-25 9-27 | 33 36 | 13/1 11/0 | 10 14 | 11 5 | 3 8 | 1 6 | 26 34 | 33 37 | - | - | 59 71 |
| N16 | ULM at Tennessee | L | 62 85 | 24-56 30-67 | .429 .448 | 8-19 11-29 | .421 .379 | 6-8 14-20 | .750 .700 | 3-24 17-29 | 27 46 | 19/1 11/0 | 15 20 | 11 11 | 4 5 | 6 7 | 33 33 | 29 52 | - | - | 62 85 |
| N19 | ULM at Southeastern La. | L | 60 63 | 25-56 22-44 | .446 .500 | 5-19 8-15 | .263 .533 | 5-7 11-18 | .714 .611 | 6-18 8-27 | 24 35 | 15/0 8/0 | 12 13 | 9 16 | 1 5 | 8 2 | 27 39 | 33 24 | - | - | 60 63 |
| N21 | ULM at Mississippi State | L | 63 78 | 25-51 31-61 | .490 .500 | 6-16 10-27 | .375 .370 | 7-9 6-8 | .778 .750 | 5-21 10-22 | 26 32 | 9/0 9/0 | 11 20 | 14 8 | 1 3 | 6 8 | 26 31 | 37 47 | - | - | 63 78 |
| N26 | ULM Harding | L | 68 71 | 26-57 23-46 | .456 .500 | 11-24 9-19 | .458 .474 | 5-6 16-19 | .833 .842 | 3-17 6-27 | 20 33 | 19/0 7/0 | 15 16 | 10 18 | 4 3 | 8 2 | 24 40 | 44 31 | - | - | 68 71 |
| N28 | ULM at Nicholls State | W | 86 65 | 31-50 21-44 | .620 .477 | 12-21 9-22 | .571 .409 | 12-19 14-18 | .632 .778 | 10-23 2-15 | 33 17 | 20/0 16/1 | 15 12 | 8 6 | 1 0 | 3 3 | 36 34 | 50 31 | - | - | 86 65 |
| D3 | ULM Louisiana Tech | L | 71 73 | 23-57 26-61 | .404 .426 | 6-17 8-24 | .353 .333 | 19-23 13-18 | .826 .722 | 14-26 11-19 | 40 30 | 21/2 23/1 | 15 14 | 17 10 | 2 4 | 2 8 | 29 32 | 42 41 | - | - | 71 73 |
| D10 | ULM at Texas A&M | L | 54 67 | 22-59 22-48 | .373 .458 | 5-24 5-13 | .208 .385 | 5-5 18-23 | 1.000 .783 | 12-17 11-25 | 29 36 | 20/1 13/0 | 11 15 | 11 12 | 1 1 | 6 8 | 27 38 | 27 29 | - | - | 54 67 |
| D12 | ULM Nicholls State | L | 70 82 | 25-65 27-54 | .385 .500 | 8-22 5-17 | .364 .294 | 12-21 23-32 | .571 .719 | 17-25 9-26 | 42 35 | 23/1 19/0 | 12 17 | 13 8 | 2 3 | 2 6 | 25 37 | 45 45 | - | - | 70 82 |
| D15 | ULM Northwestern State | | | | | | | | | | | | | | | | | | | | |
| D19 | ULM at UNLV | | | | | | | | | | | | | | | | | | | | |
| D21 | ULM at Indiana State | | | | | | | | | | | | | | | | | | | | |
| D29 | ULM Western Kentucky* | | | | | | | | | | | | | | | | | | | | |
| D31 | ULM Arkansas State* | | | | | | | | | | | | | | | | | | | | |
| J5 | ULM at Florida Atlantic* | | | | | | | | | | | | | | | | | | | | |
| J7 | ULM at FIU* | | | | | | | | | | | | | | | | | | | | |
| J12 | ULM UALR* | | | | | | | | | | | | | | | | | | | | |
| J14 | ULM North Texas* | | | | | | | | | | | | | | | | | | | | |
| J19 | ULM Denver* | | | | | | | | | | | | | | | | | | | | |
| J21 | ULM at Troy* | | | | | | | | | | | | | | | | | | | | |
| J28 | ULM UL-Lafayette* | | | | | | | | | | | | | | | | | | | | |
| F2 | ULM at Arkansas State* | | | | | | | | | | | | | | | | | | | | |
| F4 | ULM at UALR* | | | | | | | | | | | | | | | | | | | | |
| F11 | ULM South Alabama* | | | | | | | | | | | | | | | | | | | | |
| F16 | ULM at North Texas* | | | | | | | | | | | | | | | | | | | | |
| F18 | ULM at Denver* | | | | | | | | | | | | | | | | | | | | |
| F23 | ULM Middle Tennessee* | | | | | | | | | | | | | | | | | | | | |
| F25 | ULM at UL-Lafayette* | | | | | | | | | | | | | | | | | | | | |

* denotes Sun Belt Conference game



HIGHS/LOWS

ULM GAME HIGHS

| | |
|-----------------------------------|---|
| Points..... | 86, at Nicholls State (11/28) |
| Field Goals..... | 31, at Nicholls State (11/28) |
| Field-Goal Attempts..... | 65, vs. Nicholls State (12/12) |
| Field-Goal Pct..... | .620 (31-50), at Nicholls State (11/28) |
| 3-Point Field Goals..... | 12, at Nicholls State (11/28) |
| 3-Points Field-Goal Attempts..... | 23, vs. Harding (11/26) |
| 3-Point Field-Goal Pct..... | .571 (12-21), at Nicholls State (11/28) |
| Free Throws..... | 19, vs. Louisiana Tech (12/3) |
| Free-Throw Attempts..... | 23, vs. Louisiana Tech (12/3) |
| Free-Throw Pct..... | .833 (5-6), vs. Harding (11/26) |
| Rebounds..... | 42, vs. Nicholls State (12/12) |
| Assists..... | 15, at Tennessee (11/16) |
| | 15, vs. Harding (11/26) |
| | 15, at Nicholls State (11/28) |
| | 15, vs. Louisiana Tech (12/3) |
| Turnovers..... | 18, at Ole Miss (11/11) |
| Blocked Shots..... | 4, at Tennessee (11/16) |
| | 4, vs. Harding (11/26) |
| Steals..... | 8, at Southeastern La. (11/19) |
| | 8, vs. Harding (11/26) |

ULM GAME LOWS

| | |
|-----------------------------------|-----------------------------------|
| Points..... | 38, at Ole Miss (11/11) |
| Field Goals..... | 14, at Ole Miss (11/11) |
| Field-Goal Attempts..... | 49, at Ole Miss (11/11) |
| Field-Goal Pct..... | .286 (14-49), at Ole Miss (11/11) |
| 3-Point Field Goals..... | 3, at Ole Miss (11/11) |
| 3-Points Field-Goal Attempts..... | 15, at Ole Miss (11/11) |
| 3-Point Field-Goal Pct..... | .200 (3-15), at Ole Miss (11/11) |
| Free Throws..... | 5, at Southeastern La. (11/19) |
| | 5, vs. Harding (11/26) |
| Free-Throw Attempts..... | 6, vs. Harding (11/26) |
| Free-Throw Pct..... | .389 (7-18), at Ole Miss (11/11) |
| Rebounds..... | 20, vs. Harding (11/26) |
| Assists..... | 10, vs. Indiana State (11/14) |
| Turnovers..... | 8, at Nicholls State (11/28) |
| Blocked Shots..... | 1, at Southeastern La. (11/19) |
| | 1, at Mississippi State (11/21) |
| | 1, at Nicholls State (11/28) |
| Steals..... | 1, vs. Indiana State (11/14) |

ULM INDIVIDUAL PERFORMANCES

POINTS

| | |
|---------|--|
| 21..... | Fred Brown, at Mississippi State (11/21) |
| 21..... | Hugh Mingo, at Texas A&M (12/10) |
| 20..... | Charles Winborne, vs. Nicholls State (12/12) |
| 19..... | Charles Winborne, at Nicholls State (11/28) |
| 18..... | Fred Brown, at Tennessee (11/16) |
| 18..... | Charles Winborne, vs. Harding (11/26) |
| 17..... | Fred Brown, vs. Harding (11/26) |
| 17..... | Fred Brown, vs. Louisiana Tech (12/3) |
| 16..... | Fred Brown, at Southeastern La. (11/19) |

REBOUNDS

| | |
|---------|--|
| 11..... | Steven McClellan, vs. Nicholls State (12/12) |
| 9..... | Hugh Mingo, at Texas A&M (12/10) |
| 8..... | Fabio Ribeiro, vs. Louisiana Tech (12/3) |
| 7..... | Fabio Ribeiro, at Tennessee (11/16) |
| 7..... | Hugh Mingo, at Tennessee (11/16) |
| 7..... | Fred Brown, vs. Indiana State (11/14) |
| 7..... | Charles Winborne, at Nicholls State (11/28) |
| 7..... | Fabio Ribeiro, at Nicholls State (11/28) |
| 7..... | Steven McClellan, vs. Louisiana Tech (12/3) |
| 7..... | Fabio Ribeiro, at Texas A&M (12/10) |
| 7..... | Hugh Mingo, vs. Nicholls State (12/12) |

ASSISTS

| | |
|--------|---|
| 6..... | Fred Brown, at Southeastern La. (11/19) |
| 5..... | Charles Winborne, at Tennessee (11/16) |
| 5..... | Fred Brown, vs. Indiana State (11/14) |
| 5..... | Marcelis Hansberry, vs. Harding (11/26) |
| 5..... | Charles Winborne, vs. Louisiana Tech (12/3) |
| 5..... | Hugh Mingo, at Texas A&M (12/10) |

STEALS

| | |
|--------|---|
| 3..... | Fred Brown, at Southeastern La. (11/19) |
| 3..... | Steven McClellan, at Texas A&M (12/10) |
| 2..... | Fred Brown, at Tennessee (11/16) |
| 2..... | Fred Brown, at Mississippi State (11/21) |
| 2..... | R.J. McCray, at Mississippi State (11/21) |
| 2..... | Marcelis Hansberry, vs. Harding (11/26) |

BLOCKED SHOTS

| | |
|--------|--|
| 4..... | Christian Bibi Ndongo, vs. Harding (11/26) |
| 2..... | Christian Bibi Ndongo, vs. Indiana State (11/14) |
| 2..... | R.J. McCray, at Tennessee (11/16) |

3-POINT FIELD GOALS

| | |
|--------|---|
| 4..... | Fred Brown, at Tennessee (11/16) |
| 4..... | Charles Winborne, vs. Indiana State (11/14) |
| 4..... | Trent Mackey, at Nicholls State (11/28) |
| 4..... | Fred Brown, vs. Louisiana Tech (12/3) |

FREE THROWS

| | |
|--------|--|
| 5..... | Fred Brown, vs. Indiana State (11/14) |
| 5..... | Fred Brown, vs. Louisiana Tech (12/3) |
| 4..... | Fred Brown, at Mississippi State (11/21) |
| 4..... | Charles Winborne, at Nicholls State (11/28) |
| 4..... | Fabio Ribeiro, at Nicholls State (11/28) |
| 4..... | Christian Bibi Ndongo, vs. Louisiana Tech (12/3) |
| 4..... | Charles Winborne, vs. Louisiana Tech (12/3) |



THE LAST TIME...

The last time ULM...

| | |
|--|---|
| Played a ranked opponent | L, 54-67, at No. 22 Texas A&M (12/10/11) |
| Won in the last second | vs. UL-Lafayette (3/6/10) |
| Lost in the last second | 71-73, vs. Louisiana Tech (12/3/11) |
| Played in overtime | at UALR (12/31/08) |
| Won an overtime game | at Iowa, 72-67 (11/30/07) |
| Lost an overtime game | at UALR, 87-95 (12/31/08) |
| Scored 100 points or more points | 105, vs. Alcorn State (11/27/07) |
| Scored 90 points or more points | 99, vs. U of the Southwest (12/28/09) |
| Scored 80 or more points | 86, at Nicholls State (11/28/11) |
| Scored fewer than 50 points | 38, at Ole Miss (11/11/11) |
| Had four double-digit scorers | at Nicholls State (11/28/11) |
| Had five double-digit scorers | at Nicholls State (11/28/11) |
| Had no double-digit scorers | at Ole Miss (11/11/11) |
| Had more than 20 assists | 20, vs. Union College (1/4/11) |
| Had fewer than 10 assists | 8, at Denver (2/17/11) |
| Had more than 10 blocks | 10, vs. William Carey (12/2/06) |
| Had more than 10 steals | 10, at Middle Tennessee (2/3/11) |
| Had more than 20 turnovers | 26, at Iowa (11/16/10) |
| Had fewer than 10 turnovers | 8, at Nicholls State (11/28/11) |
| Made more than 30 field goals | 31, at Nicholls State (11/28/11) |
| Made more than 40 field goals | 41, vs. Texas College (12/22/03) |
| Made more than 50 field goals | 51, vs. Georgia Southern (1978-79) |
| Shot over 50 pct from field | .620 (31-50), at Nicholls State (11/28/11) |
| Shot over 60 pct from field | .620 (31-50), at Nicholls State (11/28/11) |
| Shot less than 40 pct from field | .385 (25-65), vs. Nicholls State (12/12/11) |
| Made more than 10 3-pointers | 12, at Nicholls State (11/28/11) |
| Made more than 15 3-pointers | 15, vs. Middle Tennessee (1/24/08) |
| Shot over 50 pct from 3 | .571 (12-21), at Nicholls State (11/28/11) |
| Shot over 60 pct from 3 | .615 (8-13), at UL-Lafayette (1/22/11) |
| Shot less than 30 pct from 3 | .208 (5-24), at Texas A&M (12/10/11) |
| Made more than 20 free throws | 20, at North Texas (2/19/11) |
| Made more than 30 free throws | 30, vs. Troy (12/31/09) |
| Shot over 80 pct free throws | .826 (19-23), vs. Louisiana Tech (12/3/11) |
| Shot over 90 pct free throws | 1.000 (5-5), at Texas A&M (12/10/11) |

The last time a ULM player...

| | |
|--------------------------------------|--|
| Had a double-double (pts-rbs) | Tommie Sykes (18 pts and 12 rbs), at North Texas (2/19/11) |
| Had a double-double (pts-asts) | Tony Hooper (12 pts and 14 assts), vs. Lamar (2/25/06) |
| Had 20 points or more | Charles Winborne (20), vs. Nicholls State (12/12/11) |
| Had 30 points or more | Tommie Sykes (32), vs. Union College (1/4/11) |
| Had 40 points or more | Henry Steele (40), vs. Louisiana College (1970-71) |
| Had 50 points or more | Glynn Saulters (51), vs. Nicholls State (1967-68) |
| Had 10 or more rebounds | Steven McClellan (11), vs. Nicholls State (12/12/11) |
| Had 15 or more rebound | Lance Brasher (17), vs. Middle Tennessee (1/24/08) |
| Had 20 or more rebounds | Terry Martin (22), vs. Dayton (11/3/83) |
| Had 10 or more assists | Tony Hooper (14), vs. Lamar (2/25/06) |
| Had five or more steals | Hugh Mingo (7), vs. Centenary (12/11/10) |
| Had 10 or more steals | Arthur Hayes (10), vs. McNeese State (1983) |
| Had five or more blocks | Rudy Turner (6), vs. Western Kentucky (2/4/10) |



3 MARCELIS HANSBERRY

Sophomore • Guard • 6-0 • 180
Jackson, Miss. • Provine High School

2011-12

- Had a team-high four assists against Ole Miss (Nov. 11).
- Scored 11 points and led the team five rebounds at Southeastern La. (Nov. 19).
- Got his first start of the season at Mississippi State (Nov. 21), scoring a season-best 13 points on 6-of-13 shooting.
- Tied his career high with five assists against Harding (Nov. 26).
- Recorded the first block of his career against Nicholls State (Dec. 12).

2010-11

- Appeared in 26 games, making seven starts last season.
- Record double figures in scoring twice in 2010-11.
- Had a career-best 15 points at UL-Lafayette (Jan. 22).
- Notched 13 points and three assists against Northern Colorado (Dec. 22).
- Had a season-best five assists against Centenary (Dec. 11).
- Averaged 7.0 points and 3.8 assists in his seven starts.

SEASON/CAREER HIGHS**Points**

Season: 13, at Mississippi State (11/21/11)
Career: 15, at UL-Lafayette (1/22/11)

Field Goals

Season: 6, at Mississippi State (11/21/11)
Career: 6 (twice)

Field Goal Attempts

Season: 13, at Mississippi State (11/21/11)
Career: 13, at Mississippi State (11/21/11)

3-Point Field Goals

Season: 1 (twice)
Career: 2, at UL-Lafayette (1/22/11)

3-Point Attempts

Season: 3, vs. Harding (11/26/11)
Career: 3 (four times)

Free Throws

Season: 2 (twice)
Career: 5, vs. Centenary (12/11/10)

Free Throw Attempts

Season: 3 (twice)
Career: 8, vs. Centenary (12/11/10)

Rebounds

Season: 5, at Southeastern La. (11/19/11)
Career: 5 (twice)

Offensive Rebounds

Season: 2, at Southeastern La. (11/19/11)
Career: 2, at Southeastern La. (11/19/11)

Defensive Rebounds

Season: 3 (three times)
Career: 5, at Kent State (12/2/10)

Assists

Season: 5, vs. Harding (11/26/11)
Career: 5 (three times)

Turnovers

Season: 2 (three times)
Career: 3 (five times)

Blocks

Season: 1, vs. Nicholls State (12/12/11)
Career: 1, vs. Nicholls State (12/12/11)

Steals

Season: 2, vs. Harding (11/26/11)
Career: 4, at Iowa (11/16/10)

Minutes

Season: 33 (twice)
Career: 36, at Iowa (11/16/10)

MISCELLANEOUS STATS

| | 11-12 | Career |
|-------------------------|-------|--------|
| Double-figure Points: | 2 | 4 |
| Double-figure Rebounds: | 0 | 0 |
| 20-Plus Points | 0 | 0 |
| 30-Plus Points | 0 | 0 |
| Led Team in Scoring: | 0 | 0 |
| Led Team in Rebounding | 1 | 1 |
| Led Team in Assists | 3 | 10 |
| Led Team in Blocks | 1 | 1 |
| Led Team in Steals | 3 | 6 |
| Double-Doubles: | 0 | 0 |

2011-12 SEASON GAME-BY-GAME

| Date | Opponent | gs | min | fg-a | 3fg-a | ft-a | o-d-t | pf | a | to | blk | stl | pts |
|---------|---------------------------|----|-----|------|-------|------|-------|----|---|----|-----|-----|-----|
| Nov. 11 | at Ole Miss | | 15 | 0-2 | 0-0 | 0-0 | 0-1-1 | 1 | 4 | 2 | 0 | 1 | 0 |
| Nov. 14 | Indiana State | | 10 | 2-4 | 0-2 | 1-1 | 0-0-0 | 0 | 0 | 1 | 0 | 0 | 5 |
| Nov. 16 | at Tennessee | | 19 | 2-5 | 0-1 | 0-0 | 1-1-2 | 1 | 2 | 0 | 0 | 0 | 4 |
| Nov. 19 | at Southeastern Louisiana | | 25 | 4-8 | 1-2 | 2-3 | 2-3-5 | 4 | 2 | 1 | 0 | 1 | 11 |
| Nov. 21 | at Mississippi State | * | 33 | 6-13 | 0-2 | 1-2 | 0-2-2 | 1 | 0 | 0 | 0 | 1 | 13 |
| Nov. 26 | Harding | * | 33 | 2-6 | 0-3 | 2-3 | 0-3-3 | 1 | 5 | 2 | 0 | 2 | 6 |
| Nov. 28 | at Nicholls State | * | 24 | 4-7 | 1-1 | 0-1 | 0-3-3 | 3 | 1 | 0 | 0 | 1 | 9 |
| Dec. 3 | Louisiana Tech | * | 19 | 2-9 | 0-2 | 2-2 | 3-0-3 | 2 | 2 | 2 | 0 | 1 | 6 |
| Dec. 10 | at Texas A&M | | 10 | 1-4 | 0-1 | 0-0 | 0-2-2 | 0 | 1 | 0 | 0 | 0 | 2 |
| Dec. 12 | Nicholls State | | 32 | 2-8 | 0-2 | 2-5 | 0-4-4 | 3 | 3 | 2 | 1 | 0 | 6 |
| Dec. 15 | Northwestern State | | | | | | | | | | | | |
| Dec. 19 | at UNLV | | | | | | | | | | | | |
| Dec. 21 | at Indiana State | | | | | | | | | | | | |
| Dec. 29 | Western Kentucky | | | | | | | | | | | | |
| Dec. 31 | Arkansas State | | | | | | | | | | | | |
| Jan. 5 | at Florida Atlantic | | | | | | | | | | | | |
| Jan. 7 | at FIU | | | | | | | | | | | | |
| Jan. 12 | UALR | | | | | | | | | | | | |
| Jan. 14 | North Texas | | | | | | | | | | | | |
| Jan. 19 | Denver | | | | | | | | | | | | |
| Jan. 21 | at Troy | | | | | | | | | | | | |
| Jan. 28 | UL-Lafayette | | | | | | | | | | | | |
| Feb. 2 | at Arkansas State | | | | | | | | | | | | |
| Feb. 4 | at UALR | | | | | | | | | | | | |
| Feb. 11 | South Alabama | | | | | | | | | | | | |
| Feb. 16 | at North Texas | | | | | | | | | | | | |
| Feb. 18 | at Denver | | | | | | | | | | | | |
| Feb. 23 | Middle Tennessee | | | | | | | | | | | | |
| Feb. 25 | at UL-Lafayette | | | | | | | | | | | | |

HANSBERRY'S CAREER STATISTICS

| YEAR | GP-GS | MIN/AVG | FG-A | PCT | 3FG-A | PCT | FT-A | PCT | OFF-DEF-TOT | AVG | PF-FO | AST | TO | BLK | STL | PTS | AVG |
|--------------|--------------|-----------------|---------------|-------------|--------------|-------------|--------------|-------------|-----------------|------------|-------------|-----------|-----------|----------|-----------|------------|------------|
| 2010-11 | 26-7 | 451/17.3 | 36-103 | .350 | 8-34 | .235 | 21-30 | .700 | 5-30-35 | 1.3 | 36-0 | 45 | 38 | 0 | 11 | 101 | 3.9 |
| 2011-12 | 10-4 | 220/22.0 | 25-66 | .379 | 2-16 | .125 | 10-17 | .588 | 6-19-25 | 2.5 | 16-0 | 20 | 10 | 1 | 7 | 62 | 6.2 |
| TOTAL | 36-11 | 671/18.6 | 61-169 | .361 | 10-50 | .200 | 31-47 | .660 | 11-49-60 | 1.7 | 52-0 | 65 | 48 | 1 | 18 | 163 | 4.5 |



4 R.J. McCRAY

Sophomore • Guard • 6-2 • 180
Arlington, Texas • Grace Prep Academy

2011-12

- Played in a season-high 23 minutes at Tennessee (Nov. 16), scoring five points and recording two blocks.
- Made his first start of the season at Southeastern La. (Nov. 19), scoring five points on 2-of-5 shooting.
- Had three assists at Mississippi State (Nov. 21).
- Tied his career high with four assists at Nicholls State (Nov. 28).

2010-11

- Appeared in 23 games, making three starts.
- Averaged 3.0 points and 0.9 rebounds per game.
- Came on strong, averaging 7.0 points over the final six games.
- Shot 41.8 percent from the field (23-of-58), 36.8 percent from 3-point range (7-of-19) and 59.3 percent from the free-throw line (16-of-27).
- Scored in double figures three times
- Had a season-best 12 points, including a pair of 3-pointers, against Arkansas State (Feb. 10).
- Tied his season high with 12 points against Western Kentucky (March 5) in the Sun Belt Tournament.

SEASON/CAREER HIGHS**Points**

Season: 6 (twice)
Career: 12 (twice)

Field Goals

Season: 3, at Ole Miss (11/11/11)
Career: 4, vs. Arkansas State (2/10/11)

Field Goal Attempts

Season: 4, vs. Indiana State (11/14/11)
Career: 8, vs. UL-Lafayette (2/26/11)

3-Point Field Goals

Season: 1, at Southeastern La. (11/19/11)
Career: 2 (three times)

3-Point Attempts

Season: 4, at Southeastern La. (11/19/11)
Career: 5, vs. UL-Lafayette (2/26/11)

Free Throws

Season: 2, vs. Nicholls State (12/12/11)
Career: 4 (twice)

Free Throw Attempts

Season: 3, vs. Nicholls State (12/12/11)
Career: 5, vs. Western Kentucky (3/5/11)

Rebounds

Season: 4, at Ole Miss (11/11/11)
Career: 4, at Ole Miss (11/11/11)

Offensive Rebounds

Season: 1 (twice)
Career: 1 (eight times)

Defensive Rebounds

Season: 3, at Ole Miss (11/11/11)
Career: 3 (twice)

Assists

Season: 4, at Nicholls State (11/28/11)
Career: 4 (twice)

Turnovers

Season: 4, at Tennessee (11/16/11)
Career: 4, at Tennessee (11/16/11)

Blocks

Season: 2, at Tennessee (11/16/11)
Career: 2, at Tennessee (11/16/11)

Steals

Season: 2 at Mississippi State (11/21/11)
Career: 2, at Mississippi State (11/21/11)

Minutes

Season: 23, at Tennessee (11/16/11)
Career: 31 (twice)

MISCELLANEOUS STATS

| | 11-12 | Career |
|-------------------------|-------|--------|
| Double-figure Points: | 0 | 3 |
| Double-figure Rebounds: | 0 | 0 |
| 20-Plus Points | 0 | 0 |
| 30-Plus Points | 0 | 0 |
| Led Team in Scoring: | 0 | 0 |
| Led Team in Rebounding | 0 | 0 |
| Led Team in Assists | 1 | 3 |
| Led Team in Blocks | 1 | 4 |
| Led Team in Steals | 0 | 1 |
| Double-Doubles: | 0 | 0 |

2011-12 SEASON GAME-BY-GAME

| Date | Opponent | gs | min | fg-a | 3fg-a | ft-a | o-d-t | pf | a | to | blk | stl | pts |
|---------|---------------------------|----|-----|------|-------|------|-------|----|---|----|-----|-----|-----|
| Nov. 11 | at Ole Miss | | 17 | 3-3 | 0-0 | 0-2 | 1-3-4 | 1 | 0 | 2 | 0 | 0 | 6 |
| Nov. 14 | Indiana State | | 18 | 2-4 | 0-0 | 0-0 | 1-2-3 | 0 | 0 | 0 | 0 | 0 | 4 |
| Nov. 16 | at Tennessee | | 23 | 2-3 | 0-0 | 1-2 | 0-0-0 | 1 | 1 | 4 | 2 | 1 | 5 |
| Nov. 19 | at Southeastern Louisiana | * | 13 | 2-5 | 1-4 | 0-0 | 0-0-0 | 1 | 1 | 0 | 0 | 0 | 5 |
| Nov. 21 | at Mississippi State | | 22 | 1-2 | 0-0 | 0-0 | 0-2-2 | 1 | 3 | 2 | 0 | 2 | 2 |
| Nov. 26 | Harding | | 16 | 1-2 | 0-0 | 0-0 | 0-0-0 | 0 | 0 | 0 | 0 | 0 | 2 |
| Nov. 28 | at Nicholls State | | 15 | 1-1 | 0-0 | 0-0 | 0-0-0 | 0 | 4 | 0 | 0 | 0 | 2 |
| Dec. 3 | Louisiana Tech | | 2 | 0-0 | 0-0 | 0-0 | 0-0-0 | 0 | 0 | 1 | 0 | 0 | 0 |
| Dec. 10 | at Texas A&M | | 2 | 0-0 | 0-0 | 0-0 | 0-1-1 | 0 | 0 | 1 | 0 | 0 | 0 |
| Dec. 12 | Nicholls State | | 22 | 2-5 | 0-1 | 2-3 | 0-3-3 | 4 | 2 | 0 | 0 | 0 | 6 |
| Dec. 15 | Northwestern State | | | | | | | | | | | | |
| Dec. 19 | at UNLV | | | | | | | | | | | | |
| Dec. 21 | at Indiana State | | | | | | | | | | | | |
| Dec. 29 | Western Kentucky | | | | | | | | | | | | |
| Dec. 31 | Arkansas State | | | | | | | | | | | | |
| Jan. 5 | at Florida Atlantic | | | | | | | | | | | | |
| Jan. 7 | at FIU | | | | | | | | | | | | |
| Jan. 12 | UALR | | | | | | | | | | | | |
| Jan. 14 | North Texas | | | | | | | | | | | | |
| Jan. 19 | Denver | | | | | | | | | | | | |
| Jan. 21 | at Troy | | | | | | | | | | | | |
| Jan. 28 | UL-Lafayette | | | | | | | | | | | | |
| Feb. 2 | at Arkansas State | | | | | | | | | | | | |
| Feb. 4 | at UALR | | | | | | | | | | | | |
| Feb. 11 | South Alabama | | | | | | | | | | | | |
| Feb. 16 | at North Texas | | | | | | | | | | | | |
| Feb. 18 | at Denver | | | | | | | | | | | | |
| Feb. 23 | Middle Tennessee | | | | | | | | | | | | |
| Feb. 25 | at UL-Lafayette | | | | | | | | | | | | |

MCCRAY'S CAREER STATISTICS

| YEAR | GP-GS | MIN/AVG | FG-A | PCT | 3FG-A | PCT | FT-A | PCT | OFF-DEF-TOT | AVG | PF-FO | AST | TO | BLK | STL | PTS | AVG |
|--------------|-------------|-----------------|--------------|-------------|-------------|-------------|--------------|-------------|----------------|------------|-------------|-----------|-----------|----------|----------|------------|------------|
| 2010-11 | 23-3 | 322/14.0 | 23-55 | .418 | 7-19 | .368 | 16-27 | .593 | 6-14-20 | 0.9 | 14-0 | 14 | 13 | 3 | 6 | 69 | 3.0 |
| 2011-12 | 10-1 | 150/15.0 | 14-25 | .560 | 1-5 | .200 | 3-7 | .429 | 2-11-13 | 1.3 | 8-0 | 11 | 10 | 2 | 3 | 32 | 3.2 |
| TOTAL | 33-4 | 472/14.3 | 37-80 | .463 | 8-24 | .333 | 19-34 | .559 | 8-25-33 | 1.0 | 22-0 | 25 | 23 | 5 | 9 | 101 | 3.1 |



5 CHRISTIAN BIBI NDONGO

Senior • Forward • 6-8 • 195
Yaounde, Cameroon • John Wood CC

2011-12

- Played in a career-high 23 minutes against Indiana State (Nov. 14).
- Had two blocks against Indiana State.
- Tallied five points and a career-high four blocks in a career-high 25 minutes against Harding (Nov. 26).
- Hit his second career 3-pointer against Harding.
- Scored a career-high 10 points and tied his career high with five points against Louisiana Tech (Dec. 3).

2010-11

- Appeared in 23 games, all off the bench.
- Averaged 1.7 points and 1.4 rebounds in 8.6 minutes per game.
- Had career highs in points (9), field goals (3) and 3-pointers (1) against Arkansas State (Feb. 10).
- Pulled down a season-high five rebounds twice.
- Led the team in blocked shots seven times.
- Appeared in 11 of 16 conference games.
- Upped his scoring average to 2.3 points per game in conference play.

SEASON/CAREER HIGHS**Points**

Season: 10, vs. Louisiana Tech (12/3/11)
Career: 10, vs. Louisiana Tech (12/3/11)

Field Goals

Season: 3, vs. Louisiana Tech (12/3/11)
Career: 3 (twice)

Field Goal Attempts

Season: 6, vs. Louisiana Tech (12/3/11)
Career: 6, vs. Louisiana Tech (12/3/11)

3-Point Field Goals

Season: 1, vs. Harding (11/26/11)
Career: 1 (twice)

3-Point Attempts

Season: 2, vs. Harding (11/26/11)
Career: 2, vs. Harding (11/26/11)

Free Throws

Season: 4, vs. Louisiana Tech (12/3/11)
Career: 4, vs. Louisiana Tech (12/3/11)

Free Throw Attempts

Season: 6, at Ole Miss (11/11/11)
Career: 6 (twice)

Rebounds

Season: 5 (three times)
Career: 5 (five times)

Offensive Rebounds

Season: 3, vs. Louisiana Tech (12/3/11)
Career: 3 (twice)

Defensive Rebounds

Season: 4 (twice)
Career: 4 (three times)

Assists

Season: 1 (twice)
Career: 1 (seven times)

Turnovers

Season: 2, vs. Louisiana Tech (12/3/11)
Career: 2 (six times)

Blocks

Season: 4, vs. Harding (11/26/11)
Career: 4, vs. Harding (11/26/11)

Steals

Season: 1 (four times)
Career: 1 (eight times)

Minutes

Season: 25, vs. Harding (11/26/11)
Career: 25, vs. Harding (11/26/11)

MISCELLANEOUS STATS

| | 11-12 | Career |
|-------------------------|-------|--------|
| Double-figure Points: | 1 | 1 |
| Double-figure Rebounds: | 0 | 0 |
| 20-Plus Points | 0 | 0 |
| 30-Plus Points | 0 | 0 |
| Led Team in Scoring: | 0 | 0 |
| Led Team in Rebounding | 0 | 0 |
| Led Team in Assists | 0 | 0 |
| Led Team in Blocks | 5 | 12 |
| Led Team in Steals | 1 | 1 |
| Double-Doubles: | 0 | 0 |

2011-12 SEASON GAME-BY-GAME

| Date | Opponent | gs | min | fg-a | 3fg-a | ft-a | o-d-t | pf | a | to | blk | stl | pts |
|---------|---------------------------|----|--------------|------|-------|------|-------|----|---|----|-----|-----|-----|
| Nov. 11 | at Ole Miss | * | 21 | 1-3 | 0-0 | 2-6 | 1-4-5 | 2 | 0 | 1 | 0 | 0 | 4 |
| Nov. 14 | Indiana State | | 23 | 0-1 | 0-0 | 0-0 | 0-2-2 | 0 | 1 | 0 | 2 | 1 | 0 |
| Nov. 16 | at Tennessee | | Did Not Play | | | | | | | | | | |
| Nov. 19 | at Southeastern Louisiana | * | 22 | 2-3 | 0-0 | 1-2 | 0-2-2 | 3 | 0 | 0 | 1 | 1 | 5 |
| Nov. 21 | at Mississippi State | | Did Not Play | | | | | | | | | | |
| Nov. 26 | Harding | | 25 | 1-4 | 1-2 | 2-2 | 1-4-5 | 4 | 1 | 0 | 4 | 1 | 5 |
| Nov. 28 | at Nicholls State | * | 15 | 1-1 | 0-0 | 2-3 | 1-1-2 | 4 | 0 | 0 | 1 | 0 | 4 |
| Dec. 3 | Louisiana Tech | | 22 | 3-6 | 0-0 | 4-5 | 3-2-5 | 3 | 0 | 2 | 1 | 0 | 10 |
| Dec. 10 | at Texas A&M | * | 19 | 2-5 | 0-1 | 0-0 | 2-1-3 | 4 | 0 | 0 | 0 | 1 | 4 |
| Dec. 12 | Nicholls State | * | 7 | 0-0 | 0-0 | 0-0 | 0-0-0 | 2 | 0 | 1 | 0 | 0 | 0 |
| Dec. 15 | Northwestern State | | | | | | | | | | | | |
| Dec. 19 | at UNLV | | | | | | | | | | | | |
| Dec. 21 | at Indiana State | | | | | | | | | | | | |
| Dec. 29 | Western Kentucky | | | | | | | | | | | | |
| Dec. 31 | Arkansas State | | | | | | | | | | | | |
| Jan. 5 | at Florida Atlantic | | | | | | | | | | | | |
| Jan. 7 | at FIU | | | | | | | | | | | | |
| Jan. 12 | UALR | | | | | | | | | | | | |
| Jan. 14 | North Texas | | | | | | | | | | | | |
| Jan. 19 | Denver | | | | | | | | | | | | |
| Jan. 21 | at Troy | | | | | | | | | | | | |
| Jan. 28 | UL-Lafayette | | | | | | | | | | | | |
| Feb. 2 | at Arkansas State | | | | | | | | | | | | |
| Feb. 4 | at UALR | | | | | | | | | | | | |
| Feb. 11 | South Alabama | | | | | | | | | | | | |
| Feb. 16 | at North Texas | | | | | | | | | | | | |
| Feb. 18 | at Denver | | | | | | | | | | | | |
| Feb. 23 | Middle Tennessee | | | | | | | | | | | | |
| Feb. 25 | at UL-Lafayette | | | | | | | | | | | | |

BIBI NDONGO'S CAREER STATISTICS

| YEAR | GP-GS | MIN/AVG | FG-A | PCT | 3FG-A | PCT | FT-A | PCT | OFF-DEF-TOT | AVG | PF-FO | AST | TO | BLK | STL | PTS | AVG |
|--------------|-------------|-----------------|--------------|-------------|------------|-------------|--------------|-------------|-----------------|------------|-------------|----------|-----------|-----------|----------|-----------|------------|
| 2010-11 | 23-0 | 198/8.6 | 13-32 | .406 | 1-1 | 1.000 | 11-16 | .688 | 12-21-33 | 1.4 | 20-0 | 5 | 15 | 8 | 4 | 38 | 1.7 |
| 2011-12 | 8-5 | 154/19.3 | 10-23 | .435 | 1-3 | .333 | 11-18 | .611 | 8-16-24 | 3.0 | 22-0 | 2 | 4 | 9 | 4 | 32 | 4.0 |
| TOTAL | 31-5 | 352/11.4 | 23-55 | .418 | 2-4 | .500 | 22-34 | .647 | 20-37-57 | 1.8 | 42-0 | 7 | 19 | 17 | 8 | 70 | 2.3 |

**10 TRENT MACKEY**

Freshman • Guard • 6-3 • 180

Tampa, Fla. • Newsome HS

2011-12

- Has made six starts this season.
- Recorded five points, five rebounds and two assists against Ole Miss (Nov. 11) in his first collegiate game.
- Made his first start against Indiana State (Nov. 14), scoring eight points and pulling down two rebounds.
- Had a career-high three assists at Mississippi State (Nov. 21).
- Recorded career highs in points (13) and field goals (5) against Harding (Nov. 26).
- Drained a career-high four 3-pointers against Nicholls State (Nov. 28).
- Went scoreless for the first time this season against Texas A&M (Dec. 10).

2010-11

- Averaged 20.9 points, 3.9 rebounds, 2.8 assists and 1.9 steals per game for Newsome High School.
- Finished second in Florida Athletic Coaches Association District MVP voting.
- Converted 77 of 181 (.425) from 3-point range.
- Finished second in career scoring at Newsome with 1,130 points.
- Holds school records for most 3-pointers made in a season and career at Newsome.
- Coached by his father, Jon Mackey.
- Also played for Florida Elite AAU team, coached by Conrad Foss.

SEASON/CAREER HIGHS**Points**

Season: 13, vs. Harding (11/26/11)
 Career: 13, vs. Harding (11/26/11)

Field Goals

Season: 5, vs. Harding (11/26/11)
 Career: 5, vs. Harding (11/26/11)

Field Goal Attempts

Season: 9, vs. Harding (11/26/11)
 Career: 9, vs. Harding (11/26/11)

3-Point Field Goals

Season: 4, at Nicholls State (11/28/11)
 Career: 4, at Nicholls State (11/28/11)

3-Point Attempts

Season: 7, at Nicholls State (11/28/11)
 Career: 7, at Nicholls State (11/28/11)

Free Throws

Season: 2 (twice)
 Career: 2 (twice)

Free Throw Attempts

Season: 2 (twice)
 Career: 2 (twice)

Rebounds

Season: 5, at Ole Miss (11/11/11)
 Career: 5, at Ole Miss (11/11/11)

Offensive Rebounds

Season: 1 (twice)
 Career: 1 (twice)

Defensive Rebounds

Season: 4, at Ole Miss (11/11/11)
 Career: 4, at Ole Miss (11/11/11)

Assists

Season: 4, vs. Louisiana Tech (12/3/11)
 Career: 4, vs. Louisiana Tech (12/3/11)

Turnovers

Season: 3 (twice)
 Career: 3 (twice)

Blocks

Season: n/a
 Career: n/a

Steals

Season: 1 (three times)
 Career: 1 (three times)

Minutes

Season: 28 (twice)
 Career: 28 (twice)

MISCELLANEOUS STATS

| | 11-12 | Career |
|-------------------------|-------|--------|
| Double-figure Points: | 2 | 2 |
| Double-figure Rebounds: | 0 | 0 |
| 20-Plus Points | 0 | 0 |
| 30-Plus Points | 0 | 0 |
| Led Team in Scoring: | 0 | 0 |
| Led Team in Rebounding | 0 | 0 |
| Led Team in Assists | 1 | 1 |
| Led Team in Blocks | 0 | 0 |
| Led Team in Steals | 1 | 1 |
| Double-Doubles: | 0 | 0 |

2011-12 SEASON GAME-BY-GAME

| Date | Opponent | gs | min | fg-a | 3fg-a | ft-a | o-d-t | pf | a | to | blk | stl | pts |
|---------|---------------------------|----|-----|------|-------|------|-------|----|---|----|-----|-----|-----|
| Nov. 11 | at Ole Miss | | 22 | 2-7 | 1-4 | 0-0 | 1-4-5 | 1 | 2 | 1 | 0 | 0 | 5 |
| Nov. 14 | Indiana State | * | 26 | 2-4 | 2-4 | 2-2 | 1-1-2 | 0 | 0 | 3 | 0 | 0 | 8 |
| Nov. 16 | at Tennessee | * | 23 | 2-2 | 2-2 | 0-0 | 0-1-1 | 2 | 1 | 1 | 0 | 1 | 6 |
| Nov. 19 | at Southeastern Louisiana | * | 7 | 1-1 | 0-0 | 0-0 | 0-0-0 | 1 | 0 | 2 | 0 | 0 | 2 |
| Nov. 21 | at Mississippi State | * | 28 | 2-6 | 1-4 | 0-0 | 0-3-3 | 1 | 3 | 3 | 0 | 0 | 5 |
| Nov. 26 | Harding | | 27 | 5-9 | 3-5 | 0-0 | 0-1-1 | 3 | 3 | 1 | 0 | 1 | 13 |
| Nov. 28 | at Nicholls State | * | 24 | 4-7 | 4-7 | 0-0 | 0-0-0 | 2 | 0 | 1 | 0 | 0 | 12 |
| Dec. 3 | Louisiana Tech | * | 27 | 3-6 | 1-4 | 2-2 | 0-1-1 | 3 | 4 | 1 | 0 | 0 | 9 |
| Dec. 10 | at Texas A&M | | 11 | 0-3 | 0-3 | 0-0 | 0-0-0 | 2 | 0 | 1 | 0 | 0 | 0 |
| Dec. 12 | Nicholls State | | 28 | 3-9 | 2-7 | 0-0 | 1-2-3 | 2 | 1 | 0 | 0 | 1 | 8 |
| Dec. 15 | Northwestern State | | | | | | | | | | | | |
| Dec. 19 | at UNLV | | | | | | | | | | | | |
| Dec. 21 | at Indiana State | | | | | | | | | | | | |
| Dec. 29 | Western Kentucky | | | | | | | | | | | | |
| Dec. 31 | Arkansas State | | | | | | | | | | | | |
| Jan. 5 | at Florida Atlantic | | | | | | | | | | | | |
| Jan. 7 | at FIU | | | | | | | | | | | | |
| Jan. 12 | UALR | | | | | | | | | | | | |
| Jan. 14 | North Texas | | | | | | | | | | | | |
| Jan. 19 | Denver | | | | | | | | | | | | |
| Jan. 21 | at Troy | | | | | | | | | | | | |
| Jan. 28 | UL-Lafayette | | | | | | | | | | | | |
| Feb. 2 | at Arkansas State | | | | | | | | | | | | |
| Feb. 4 | at UALR | | | | | | | | | | | | |
| Feb. 11 | South Alabama | | | | | | | | | | | | |
| Feb. 16 | at North Texas | | | | | | | | | | | | |
| Feb. 18 | at Denver | | | | | | | | | | | | |
| Feb. 23 | Middle Tennessee | | | | | | | | | | | | |
| Feb. 25 | at UL-Lafayette | | | | | | | | | | | | |

MACKEY'S CAREER STATISTICS

| YEAR | GP-GS | MIN/AVG | FG-A | PCT | 3FG-A | PCT | FT-A | PCT | OFF-DEF-TOT | AVG | PF-FO | AST | TO | BLK | STL | PTS | AVG |
|--------------|-------------|-----------------|--------------|-------------|--------------|-------------|------------|--------------|----------------|------------|-------------|-----------|-----------|----------|----------|-----------|------------|
| 2011-12 | 10-6 | 223/22.3 | 24-54 | .444 | 16-40 | .400 | 4-4 | 1.000 | 3-13-16 | 1.6 | 17-0 | 14 | 14 | 0 | 3 | 68 | 6.8 |
| TOTAL | 10-6 | 223/22.3 | 24-54 | .444 | 16-40 | .400 | 4-4 | 1.000 | 3-13-16 | 1.6 | 17-0 | 14 | 14 | 0 | 3 | 68 | 6.8 |



11 CHARLES WINBORNE

Sophomore • Guard • 6-1 • 185
Shreveport, La. • Loyola-Chicago

2011-12

- Made his ULM debut against Ole Miss (Nov. 11), scoring six points and dishing out three assists.
- Tallied 12 points, including four 3-pointers against Indiana State (Nov. 14).
- Scored 15 points on 6-of-12 shooting at Southeastern La. (Nov. 19).
- Had 18 points on 7-of-12 shooting against Harding (Nov. 26).
- Recorded 19 points and a career-high seven rebounds at Nicholls State (Nov. 28).
- Has made starts in six straight games.
- Scored a career-high 20 points versus Nicholls State (Dec. 12).
- Has scored in double figures in four of the last five games.

2010-11

- Sat out last season after transferring from Loyola-Chicago.

SEASON/CAREER HIGHS**Points**

Season: 20, vs. Nicholls State (12/12/11)
Career: 20, vs. Nicholls State (12/12/11)

Field Goals

Season: 7 (twice)
Career: 7 (twice)

Field Goal Attempts

Season: 12 (three times)
Career: 12 (three times)

3-Point Field Goals

Season: 4, vs. Indiana State (11/14/11)
Career: 4, vs. Indiana State (11/14/11)

3-Point Attempts

Season: 6 (twice)
Career: 6 (twice)

Free Throws

Season: 4 (twice)
Career: 4 (twice)

Free Throw Attempts

Season: 6, vs. Louisiana Tech (12/3/11)
Career: 6, vs. Louisiana Tech (12/3/11)

Rebounds

Season: 7, at Nicholls State (11/28/11)
Career: 7, at Nicholls State (11/28/11)

Offensive Rebounds

Season: 1 (four times)
Career: 1 (four times)

Defensive Rebounds

Season: 7, at Nicholls State (11/28/11)
Career: 7, at Nicholls State (11/28/11)

Assists

Season: 5 (twice)
Career: 5 (twice)

Turnovers

Season: 2 (three times)
Career: 2 (three times)

Blocks

Season: 1, at Ole Miss (11/11/11)
Career: 1, at Ole Miss (11/11/11)

Steals

Season: 1 (twice)
Career: 1 (three times)

Minutes

Season: 35, at Southeastern La. (11/19/11)
Career: 35, at Southeastern La. (11/19/11)

MISCELLANEOUS STATS

| | 11-12 | Career |
|-------------------------|-------|--------|
| Double-figure Points: | 6 | 6 |
| Double-figure Rebounds: | 0 | 0 |
| 20-Plus Points | 1 | 1 |
| 30-Plus Points | 0 | 0 |
| Led Team in Scoring: | 3 | 3 |
| Led Team in Rebounding | 1 | 1 |
| Led Team in Assists | 2 | 2 |
| Led Team in Blocks | 1 | 1 |
| Led Team in Steals | 0 | 0 |
| Double-Doubles: | 0 | 0 |

2011-12 SEASON GAME-BY-GAME

| Date | Opponent | gs | min | fg-a | 3fg-a | ft-a | o-d-t | pf | a | to | blk | stl | pts |
|---------|---------------------------|----|-----|------|-------|------|-------|----|---|----|-----|-----|-----|
| Nov. 11 | at Ole Miss | * | 23 | 2-6 | 1-3 | 1-2 | 0-2-2 | 3 | 3 | 1 | 1 | 0 | 6 |
| Nov. 14 | Indiana State | | 26 | 4-7 | 4-5 | 0-0 | 0-0-0 | 1 | 1 | 1 | 0 | 0 | 12 |
| Nov. 16 | at Tennessee | * | 23 | 2-6 | 2-5 | 0-0 | 0-2-2 | 1 | 5 | 1 | 0 | 0 | 6 |
| Nov. 19 | at Southeastern Louisiana | | 35 | 6-12 | 3-6 | 0-0 | 1-2-3 | 2 | 3 | 2 | 0 | 1 | 15 |
| Nov. 21 | at Mississippi State | * | 25 | 4-9 | 1-3 | 0-0 | 1-3-4 | 1 | 0 | 2 | 0 | 0 | 9 |
| Nov. 26 | Harding | * | 30 | 7-12 | 3-6 | 1-1 | 0-0-0 | 1 | 4 | 1 | 0 | 1 | 18 |
| Nov. 28 | at Nicholls State | * | 27 | 6-8 | 3-5 | 4-5 | 0-7-7 | 1 | 2 | 1 | 0 | 0 | 19 |
| Dec. 3 | Louisiana Tech | * | 33 | 5-13 | 1-5 | 4-6 | 1-2-3 | 0 | 5 | 1 | 0 | 0 | 15 |
| Dec. 10 | at Texas A&M | * | 29 | 1-7 | 0-4 | 2-2 | 0-1-1 | 1 | 3 | 0 | 0 | 0 | 4 |
| Dec. 12 | Nicholls State | * | 25 | 7-12 | 3-5 | 3-4 | 1-2-3 | 2 | 2 | 2 | 0 | 0 | 20 |
| Dec. 15 | Northwestern State | | | | | | | | | | | | |
| Dec. 19 | at UNLV | | | | | | | | | | | | |
| Dec. 21 | at Indiana State | | | | | | | | | | | | |
| Dec. 29 | Western Kentucky | | | | | | | | | | | | |
| Dec. 31 | Arkansas State | | | | | | | | | | | | |
| Jan. 5 | at Florida Atlantic | | | | | | | | | | | | |
| Jan. 7 | at FIU | | | | | | | | | | | | |
| Jan. 12 | UALR | | | | | | | | | | | | |
| Jan. 14 | North Texas | | | | | | | | | | | | |
| Jan. 19 | Denver | | | | | | | | | | | | |
| Jan. 21 | at Troy | | | | | | | | | | | | |
| Jan. 28 | UL-Lafayette | | | | | | | | | | | | |
| Feb. 2 | at Arkansas State | | | | | | | | | | | | |
| Feb. 4 | at UALR | | | | | | | | | | | | |
| Feb. 11 | South Alabama | | | | | | | | | | | | |
| Feb. 16 | at North Texas | | | | | | | | | | | | |
| Feb. 18 | at Denver | | | | | | | | | | | | |
| Feb. 23 | Middle Tennessee | | | | | | | | | | | | |
| Feb. 25 | at UL-Lafayette | | | | | | | | | | | | |

WINBORNE'S CAREER STATISTICS

| YEAR | GP-GS | MIN/AVG | FG-A | PCT | 3FG-A | PCT | FT-A | PCT | OFF-DEF-TOT | AVG | PF-FO | AST | TO | BLK | STL | PTS | AVG |
|--------------|-------------|-----------------|--------------|-------------|--------------|-------------|--------------|-------------|----------------|------------|-------------|-----------|-----------|----------|----------|------------|------------|
| 2009-10 | 7-0 | 10/1.4 | 1-4 | .250 | 1-1 | 1.000 | 0-0 | .000 | 0-1-1 | 0.1 | 1-0 | 0 | 2 | 0 | 1 | 3 | 0.4 |
| 2011-12 | 10-8 | 27.6/27.6 | 44-92 | .478 | 21-47 | .447 | 15-20 | .750 | 4-21-25 | 2.5 | 13-0 | 28 | 12 | 1 | 2 | 124 | 12.4 |
| TOTAL | 17-8 | 286/16.8 | 45-96 | .469 | 22-48 | .458 | 15-20 | .750 | 4-22-26 | 1.5 | 14-0 | 28 | 14 | 1 | 3 | 127 | 7.5 |

**14 IFE EKE**

Sophomore • Forward • 6-7 • 210

Lagos, Nigeria • Northwest Rankin HS

2011-12

- Will redshirt due to injury.

2010-11

- Appeared in five games, all off the bench.
- Made his collegiate debut against Iowa (Nov. 16) and pulled down a season-best two rebounds.
- Played in a season-high six minutes at Stephen F. Austin (Dec. 29).

SEASON/CAREER HIGHS**Points**

Season:
Career: none

Field Goals

Season:
Career: none

Field Goal Attempts

Season:
Career: 1, at Iowa (11/16/10)

3-Point Field Goals

Season:
Career: none

3-Point Attempts

Season:
Career: none

Free Throws

Season:
Career: none

Free Throw Attempts

Season:
Career: none

Rebounds

Season:
Career: 2, at Iowa (11/16/10)

Offensive Rebounds

Season:
Career: none

Defensive Rebounds

Season:
Career: 2, at Iowa (11/16/10)

Assists

Season:
Career: none

Turnovers

Season:
Career: 1, at Iowa (11/16/10)

Blocks

Season:
Career: none

Steals

Season:
Career: none

Minutes

Season:
Career: 6, at Stephen F. Austin (12/29/10)

MISCELLANEOUS STATS

| | 11-12 | Career |
|-------------------------|-------|--------|
| Double-figure Points: | 0 | 0 |
| Double-figure Rebounds: | 0 | 0 |
| 20-Plus Points | 0 | 0 |
| 30-Plus Points | 0 | 0 |
| Led Team in Scoring: | 0 | 0 |
| Led Team in Rebounding | 0 | 0 |
| Led Team in Assists | 0 | 0 |
| Led Team in Blocks | 0 | 0 |
| Led Team in Steals | 0 | 0 |
| Double-Doubles: | 0 | 0 |

2011-12 SEASON GAME-BY-GAME

| Date | Opponent | gs | min | fg-a | 3fg-a | ft-a | o-d-t | pf | a | to | blk | stl | pts |
|---------|---------------------------|----|--------------|------|-------|------|-------|----|---|----|-----|-----|-----|
| Nov. 11 | at Ole Miss | | Did Not Play | | | | | | | | | | |
| Nov. 14 | Indiana State | | Did Not Play | | | | | | | | | | |
| Nov. 16 | at Tennessee | | Did Not Play | | | | | | | | | | |
| Nov. 19 | at Southeastern Louisiana | | Did Not Play | | | | | | | | | | |
| Nov. 21 | at Mississippi State | | Did Not Play | | | | | | | | | | |
| Nov. 26 | Harding | | Did Not Play | | | | | | | | | | |
| Nov. 28 | at Nicholls State | | Did Not Play | | | | | | | | | | |
| Dec. 3 | Louisiana Tech | | Did Not Play | | | | | | | | | | |
| Dec. 10 | at Texas A&M | | Did Not Play | | | | | | | | | | |
| Dec. 12 | Nicholls State | | Did Not Play | | | | | | | | | | |
| Dec. 15 | Northwestern State | | | | | | | | | | | | |
| Dec. 19 | at UNLV | | | | | | | | | | | | |
| Dec. 21 | at Indiana State | | | | | | | | | | | | |
| Dec. 29 | Western Kentucky | | | | | | | | | | | | |
| Dec. 31 | Arkansas State | | | | | | | | | | | | |
| Jan. 5 | at Florida Atlantic | | | | | | | | | | | | |
| Jan. 7 | at FIU | | | | | | | | | | | | |
| Jan. 12 | UALR | | | | | | | | | | | | |
| Jan. 14 | North Texas | | | | | | | | | | | | |
| Jan. 19 | Denver | | | | | | | | | | | | |
| Jan. 21 | at Troy | | | | | | | | | | | | |
| Jan. 28 | UL-Lafayette | | | | | | | | | | | | |
| Feb. 2 | at Arkansas State | | | | | | | | | | | | |
| Feb. 4 | at UALR | | | | | | | | | | | | |
| Feb. 11 | South Alabama | | | | | | | | | | | | |
| Feb. 16 | at North Texas | | | | | | | | | | | | |
| Feb. 18 | at Denver | | | | | | | | | | | | |
| Feb. 23 | Middle Tennessee | | | | | | | | | | | | |
| Feb. 25 | at UL-Lafayette | | | | | | | | | | | | |

EKE'S CAREER STATISTICS

| YEAR | GP-GS | MIN/AVG | FG-A | PCT | 3FG-A | PCT | FT-A | PCT | OFF-DEF-TOT | AVG | PF-FO | AST | TO | BLK | STL | PTS | AVG |
|--------------|------------|---------------|------------|-------------|------------|-------------|------------|-------------|--------------|------------|------------|----------|----------|----------|----------|----------|------------|
| 2010-11 | 5-0 | 16/3.2 | 0-1 | .000 | 0-0 | .000 | 0-0 | .000 | 0-3-3 | 0.6 | 0-0 | 0 | 1 | 0 | 0 | 0 | 0.0 |
| TOTAL | 5-0 | 16/3.2 | 0-1 | .000 | 0-0 | .000 | 0-0 | .000 | 0-3-3 | 0.6 | 0-0 | 0 | 1 | 0 | 0 | 0 | 0.0 |



15 STEVEN McCLELLAN
 Sophomore • Center • 6-7 • 250
 Fresno, Calif. • Edison HS

2011-12

- Made his season debut against Louisiana Tech (Dec. 3), scoring six points and pulling down seven rebounds in 21 minutes.
- Had a career-high three steals at Texas A&M (Dec. 10).
- Pulled down a career-best 11 rebounds against Nicholls State (Dec. 12).
- Averaging 6.7 boards in three games.

2010-11

- Appeared in 28 games, making 14 starts as a freshman.
- Averaged 5.1 points and 4.0 rebounds per game.
- Shot 50.9 percent from the field (57-of-112) and 63.6 percent from the free-throw line (28-of-44).
- Scored in double figures on two occasions.
- Averaged 5.0 points and 3.9 rebounds during conference play.
- Made his first start against Stephen F. Austin (Nov. 23), scoring a career-best 13 points.
- Had a season-high nine rebounds at UL-Lafayette (Jan. 22).
- Had 12 points on 4-of-5 shooting against FIU (Jan. 2).

SEASON/CAREER HIGHS**Points**

Season: 7, vs. Nicholls State (12/12/11)
 Career: 13, vs. Stephen F. Austin (11/23/10)

Field Goals

Season: 3, vs. Louisiana Tech (12/3/11)
 Career: 5, vs. Stephen F. Austin (11/23/10)

Field Goal Attempts

Season: 6, vs. Nicholls State (12/12/11)
 Career: 9, vs. Stephen F. Austin (11/23/10)

3-Point Field Goals

Season: n/a
 Career: 1 (twice)

3-Point Attempts

Season: n/a
 Career: 1 (four times)

Free Throws

Season: 3, vs. Nicholls State (12/12/11)
 Career: 4 (twice)

Free Throw Attempts

Season: 4, vs. Nicholls State (12/12/11)
 Career: 5, at Stephen F. Austin (12/29/10)

Rebounds

Season: 11, vs. Nicholls State (12/12/11)
 Career: 11, vs. Nicholls State (12/12/11)

Offensive Rebounds

Season: 6, vs. Nicholls State (12/12/11)
 Career: 6 (twice)

Defensive Rebounds

Season: 6, vs. Louisiana Tech (12/3/11)
 Career: 6 (twice)

Assists

Season: n/a
 Career: 2 (twice)

Turnovers

Season: 2 (twice)
 Career: 2 (six times)

Blocks

Season: 1 (twice)
 Career: 2 (twice)

Steals

Season: 3, at Texas A&M (12/10/11)
 Career: 3, at Texas A&M (12/10/11)

Minutes

Season: 21, vs. Louisiana Tech (12/3/11)
 Career: 31, at UL-Lafayette (1/22/11)

MISCELLANEOUS STATS

| | 11-12 | Career |
|-------------------------|-------|--------|
| Double-figure Points: | 0 | 2 |
| Double-figure Rebounds: | 1 | 1 |
| 20-Plus Points | 0 | 0 |
| 30-Plus Points | 0 | 0 |
| Led Team in Scoring: | 0 | 0 |
| Led Team in Rebounding | 0 | 8 |
| Led Team in Assists | 0 | 0 |
| Led Team in Blocks | 2 | 9 |
| Led Team in Steals | 1 | 2 |
| Double-Doubles: | 0 | 0 |

2011-12 SEASON GAME-BY-GAME

| Date | Opponent | gs | min | fg-a | 3fg-a | ft-a | o-d-t | pf | a | to | blk | stl | pts |
|---------|---------------------------|----|--------------|------|-------|------|--------|----|---|----|-----|-----|-----|
| Nov. 11 | at Ole Miss | | Did Not Play | | | | | | | | | | |
| Nov. 14 | Indiana State | | Did Not Play | | | | | | | | | | |
| Nov. 16 | at Tennessee | | Did Not Play | | | | | | | | | | |
| Nov. 19 | at Southeastern Louisiana | | Did Not Play | | | | | | | | | | |
| Nov. 21 | at Mississippi State | | Did Not Play | | | | | | | | | | |
| Nov. 26 | Harding | | Did Not Play | | | | | | | | | | |
| Nov. 28 | at Nicholls State | | Did Not Play | | | | | | | | | | |
| Dec. 3 | Louisiana Tech | | 21 | 3-5 | 0-0 | 0-0 | 1-6-7 | 5 | 0 | 2 | 1 | 0 | 6 |
| Dec. 10 | at Texas A&M | * | 20 | 2-5 | 0-0 | 0-0 | 0-2-2 | 5 | 0 | 0 | 0 | 3 | 4 |
| Dec. 12 | Nicholls State | * | 19 | 2-6 | 0-0 | 3-4 | 6-5-11 | 2 | 0 | 2 | 1 | 0 | 7 |
| Dec. 15 | Northwestern State | | | | | | | | | | | | |
| Dec. 19 | at UNLV | | | | | | | | | | | | |
| Dec. 21 | at Indiana State | | | | | | | | | | | | |
| Dec. 29 | Western Kentucky | | | | | | | | | | | | |
| Dec. 31 | Arkansas State | | | | | | | | | | | | |
| Jan. 5 | at Florida Atlantic | | | | | | | | | | | | |
| Jan. 7 | at FIU | | | | | | | | | | | | |
| Jan. 12 | UALR | | | | | | | | | | | | |
| Jan. 14 | North Texas | | | | | | | | | | | | |
| Jan. 19 | Denver | | | | | | | | | | | | |
| Jan. 21 | at Troy | | | | | | | | | | | | |
| Jan. 28 | UL-Lafayette | | | | | | | | | | | | |
| Feb. 2 | at Arkansas State | | | | | | | | | | | | |
| Feb. 4 | at UALR | | | | | | | | | | | | |
| Feb. 11 | South Alabama | | | | | | | | | | | | |
| Feb. 16 | at North Texas | | | | | | | | | | | | |
| Feb. 18 | at Denver | | | | | | | | | | | | |
| Feb. 23 | Middle Tennessee | | | | | | | | | | | | |
| Feb. 25 | at UL-Lafayette | | | | | | | | | | | | |

McCLELLAN'S CAREER STATISTICS

| YEAR | GP-GS | MIN/AVG | FG-A | PCT | 3FG-A | PCT | FT-A | PCT | OFF-DEF-TOT | AVG | PF-FO | AST | TO | BLK | STL | PTS | AVG |
|--------------|--------------|-----------------|---------------|-------------|------------|-------------|--------------|-------------|------------------|------------|-------------|-----------|-----------|-----------|-----------|------------|------------|
| 2010-11 | 28-14 | 542/19.4 | 57-112 | .509 | 2-5 | .400 | 28-44 | .636 | 49-64-113 | 4.0 | 82-3 | 14 | 23 | 9 | 10 | 144 | 5.1 |
| 2011-12 | 3-2 | 60/20.0 | 7-16 | .438 | 0-0 | .000 | 3-4 | .750 | 7-13-20 | 6.7 | 12-2 | 0 | 4 | 2 | 3 | 17 | 5.7 |
| TOTAL | 31-16 | 602/19.4 | 64-128 | .500 | 2-5 | .400 | 31-48 | .646 | 56-77-133 | 4.3 | 94-5 | 14 | 27 | 11 | 13 | 161 | 5.2 |



23 REGINALD SMITH

Freshman • Guard • 6-0 • 160
Columbia, La. • Caldwell HS

2011-12

- Joined the team as a walk-on.
- Made his ULM debut at Tennessee (Nov. 16).

2010-11

- Earned second-team Louisiana 3A All-State honors for Caldwell High School.
- Averaged 22.3 points, eight assists and three rebounds per game.
- Selected to All-Northeast Louisiana team.
- Two-time first-team all-conference selection.

SEASON/CAREER HIGHS**Points**

Season: n/a
Career: n/a

Field Goals

Season: n/a
Career: n/a

Field Goal Attempts

Season: n/a
Career: n/a

3-Point Field Goals

Season: n/a
Career: n/a

3-Point Attempts

Season: n/a
Career: n/a

Free Throws

Season: n/a
Career: n/a

Free Throw Attempts

Season: n/a
Career: n/a

Rebounds

Season: n/a
Career: n/a

Offensive Rebounds

Season: n/a
Career: n/a

Defensive Rebounds

Season: n/a
Career: n/a

Assists

Season: n/a
Career: n/a

Turnovers

Season: n/a
Career: n/a

Blocks

Season: n/a
Career: n/a

Steals

Season: n/a
Career: n/a

Minutes

Season: 2, at Tennessee (11/16/11)
Career: 2, at Tennessee (11/16/11)

MISCELLANEOUS STATS

| | 11-12 | Career |
|-------------------------|-------|--------|
| Double-figure Points: | 0 | 0 |
| Double-figure Rebounds: | 0 | 0 |
| 20-Plus Points | 0 | 0 |
| 30-Plus Points | 0 | 0 |
| Led Team in Scoring: | 0 | 0 |
| Led Team in Rebounding | 0 | 0 |
| Led Team in Assists | 0 | 0 |
| Led Team in Blocks | 0 | 0 |
| Led Team in Steals | 0 | 0 |
| Double-Doubles: | 0 | 0 |

2011-12 SEASON GAME-BY-GAME

| Date | Opponent | gs | min | fg-a | 3fg-a | ft-a | o-d-t | pf | a | to | blk | stl | pts |
|---------|---------------------------|--------------|-----|------|-------|------|-------|----|---|----|-----|-----|-----|
| Nov. 11 | at Ole Miss | Did Not Play | | | | | | | | | | | |
| Nov. 14 | Indiana State | Did Not Play | | | | | | | | | | | |
| Nov. 16 | at Tennessee | 2 | | 0-0 | 0-0 | 0-0 | 0-0-0 | 0 | 0 | 0 | 0 | 0 | 0 |
| Nov. 19 | at Southeastern Louisiana | Did Not Play | | | | | | | | | | | |
| Nov. 21 | at Mississippi State | 1 | | 0-0 | 0-0 | 0-0 | 0-0-0 | 0 | 0 | 0 | 0 | 0 | 0 |
| Nov. 26 | Harding | Did Not Play | | | | | | | | | | | |
| Nov. 28 | at Nicholls State | Did Not Play | | | | | | | | | | | |
| Dec. 3 | Louisiana Tech | Did Not Play | | | | | | | | | | | |
| Dec. 10 | at Texas A&M | Did Not Play | | | | | | | | | | | |
| Dec. 12 | Nicholls State | Did Not Play | | | | | | | | | | | |
| Dec. 15 | Northwestern State | | | | | | | | | | | | |
| Dec. 19 | at UNLV | | | | | | | | | | | | |
| Dec. 21 | at Indiana State | | | | | | | | | | | | |
| Dec. 29 | Western Kentucky | | | | | | | | | | | | |
| Dec. 31 | Arkansas State | | | | | | | | | | | | |
| Jan. 5 | at Florida Atlantic | | | | | | | | | | | | |
| Jan. 7 | at FIU | | | | | | | | | | | | |
| Jan. 12 | UALR | | | | | | | | | | | | |
| Jan. 14 | North Texas | | | | | | | | | | | | |
| Jan. 19 | Denver | | | | | | | | | | | | |
| Jan. 21 | at Troy | | | | | | | | | | | | |
| Jan. 28 | UL-Lafayette | | | | | | | | | | | | |
| Feb. 2 | at Arkansas State | | | | | | | | | | | | |
| Feb. 4 | at UALR | | | | | | | | | | | | |
| Feb. 11 | South Alabama | | | | | | | | | | | | |
| Feb. 16 | at North Texas | | | | | | | | | | | | |
| Feb. 18 | at Denver | | | | | | | | | | | | |
| Feb. 23 | Middle Tennessee | | | | | | | | | | | | |
| Feb. 25 | at UL-Lafayette | | | | | | | | | | | | |

SMITH'S CAREER STATISTICS

| YEAR | GP-GS | MIN/AVG | FG-A | PCT | 3FG-A | PCT | FT-A | PCT | OFF-DEF-TOT | AVG | PF-FO | AST | TO | BLK | STL | PTS | AVG |
|--------------|------------|--------------|------------|-------------|------------|-------------|------------|-------------|--------------|------------|------------|----------|----------|----------|----------|----------|------------|
| 2011-12 | 2-0 | 3/1.5 | 0-0 | .000 | 0-0 | .000 | 0-0 | .000 | 0-0-0 | 0.0 | 0-0 | 0 | 0 | 0 | 0 | 0 | 0.0 |
| TOTAL | 2-0 | 3/1.5 | 0-0 | .000 | 0-0 | .000 | 0-0 | .000 | 0-0-0 | 0.0 | 0-0 | 0 | 0 | 0 | 0 | 0 | 0.0 |



24 HUGH MINGO

Senior • Guard • 6-3 • 175
West Monroe, La. • South Plains CC

2011-12

- Attempted a season-high 13 shots against Indiana State (Nov. 14).
- Came off the bench to record 11 points, seven rebounds and four assists at Tennessee (Nov. 16).
- Scored 13 points on 6-of-9 shooting at Nicholls State (Nov. 28). Also had a career-high three offensive rebounds.
- Had season highs in points (21), rebounds (9) and assists (5) at Texas A&M (Dec. 10). Shot 9-of-12 from the field and hit both of his 3-point attempts.

2010-11

- Led the team with 30 starts and was the only ULM player to appear in all 31 games.
- Averaged 9.5 points and 4.7 rebounds per game.
- Tied for the team lead with 44 steals.
- Shot 37.6 percent from the field (111-of-295), 29.4 percent from 3-point range (45-of-153) and 66.7 percent from the free-throw line (28-of-42).
- Led the team in scoring on six occasions.
- Scored in double figures in 13 consecutive games early in the season.
- Named Sun Belt Player of the Week (Dec. 13) after scoring a career-high 27 points and swiping a career-high seven steals (third most in school history) against Centenary.
- Had 18 points on 8-of-13 shooting at Louisiana Tech (Dec. 4).
- Post first career double-double (11 points and 10 rebounds) at Arkansas State (Jan. 27).
- Followed up with an 18-point, 10-rebound effort in his next game, against Troy (Jan. 29).

SEASON/CAREER HIGHS

Points

Season: 21, at Texas A&M (12/10/11)
Career: 27, vs. Centenary (12/11/10)

Field Goals

Season: 9, at Texas A&M (12/10/11)
Career: 9 (twice)

Field Goal Attempts

Season: 13, vs. Indiana State (11/14/11)
Career: 17, vs. Centenary (12/11/10)

3-Point Field Goals

Season: 2 (twice)
Career: 4 (twice)

3-Point Attempts

Season: 3 (twice)
Career: 10 (twice)

Free Throws

Season: 2 (twice)
Career: 7, vs. Centenary (12/11/10)

Free Throw Attempts

Season: 3 (twice)
Career: 9, vs. Centenary (12/11/10)

Rebounds

Season: 9, at Texas A&M (12/10/11)
Career: 10 (twice)

Offensive Rebounds

Season: 3, at Nicholls State (11/28/11)
Career: 3, at Nicholls State (11/28/11)

Defensive Rebounds

Season: 7, at Texas A&M (12/10/11)
Career: 9, at Arkansas State (1/27/11)

Assists

Season: 5, at Texas A&M (12/10/11)
Career: 5, at Texas A&M (12/10/11)

Turnovers

Season: 3 (twice)
Career: 5 (twice)

Blocks

Season: 1 (three times)
Career: 2, vs. SE Oklahoma State (11/20/10)

Steals

Season: 1 (three times)
Career: 7, vs. Centenary (12/11/10)

Minutes

Season: 35, at Texas A&M (12/10/11)
Career: 40 (seven times)

MISCELLANEOUS STATISTICS

| | 11-12 | Career |
|-------------------------|-------|--------|
| Double-figure Points: | 3 | 18 |
| Double-figure Rebounds: | 0 | 2 |
| 20-Plus Points | 1 | 2 |
| 30-Plus Points | 0 | 0 |
| Led Team in Scoring: | 1 | 7 |
| Led Team in Rebounding | 3 | 9 |
| Led Team in Assists | 1 | 6 |
| Led Team in Blocks | 1 | 4 |
| Led Team in Steals | 1 | 13 |
| Double-Doubles: | 0 | 2 |

2011-12 SEASON GAME-BY-GAME

| Date | Opponent | gs | min | fg-a | 3fg-a | ft-a | o-d-t | pf | a | to | blk | stl | pts |
|---------|---------------------------|----|-----|------|-------|------|-------|----|---|----|-----|-----|-----|
| Nov. 11 | at Ole Miss | * | 18 | 1-5 | 0-2 | 0-0 | 0-0-0 | 4 | 0 | 3 | 1 | 1 | 2 |
| Nov. 14 | Indiana State | * | 28 | 3-13 | 0-3 | 0-0 | 0-5-5 | 2 | 0 | 3 | 1 | 0 | 6 |
| Nov. 16 | at Tennessee | | 27 | 5-12 | 0-2 | 1-2 | 1-6-7 | 2 | 4 | 0 | 1 | 0 | 11 |
| Nov. 19 | at Southeastern Louisiana | * | 17 | 1-5 | 0-2 | 0-0 | 0-1-1 | 2 | 0 | 0 | 0 | 1 | 2 |
| Nov. 21 | at Mississippi State | | 16 | 3-6 | 1-2 | 2-3 | 2-3-5 | 1 | 1 | 0 | 0 | 0 | 9 |
| Nov. 26 | Harding | * | 10 | 0-2 | 0-1 | 0-0 | 0-1-1 | 3 | 0 | 0 | 0 | 0 | 0 |
| Nov. 28 | at Nicholls State | | 21 | 6-9 | 1-2 | 0-1 | 3-1-4 | 2 | 1 | 1 | 0 | 0 | 13 |
| Dec. 3 | Louisiana Tech | | 13 | 0-3 | 0-0 | 2-2 | 1-5-6 | 1 | 2 | 1 | 0 | 0 | 2 |
| Dec. 10 | at Texas A&M | * | 35 | 9-12 | 2-2 | 1-1 | 2-7-9 | 2 | 5 | 2 | 0 | 1 | 21 |
| Dec. 12 | Nicholls State | * | 26 | 4-10 | 2-3 | 1-3 | 1-6-7 | 3 | 0 | 2 | 0 | 0 | 11 |
| Dec. 15 | Northwestern State | | | | | | | | | | | | |
| Dec. 19 | at UNLV | | | | | | | | | | | | |
| Dec. 21 | at Indiana State | | | | | | | | | | | | |
| Dec. 29 | Western Kentucky | | | | | | | | | | | | |
| Dec. 31 | Arkansas State | | | | | | | | | | | | |
| Jan. 5 | at Florida Atlantic | | | | | | | | | | | | |
| Jan. 7 | at FIU | | | | | | | | | | | | |
| Jan. 12 | UALR | | | | | | | | | | | | |
| Jan. 14 | North Texas | | | | | | | | | | | | |
| Jan. 19 | Denver | | | | | | | | | | | | |
| Jan. 21 | at Troy | | | | | | | | | | | | |
| Jan. 28 | UL-Lafayette | | | | | | | | | | | | |
| Feb. 2 | at Arkansas State | | | | | | | | | | | | |
| Feb. 4 | at UALR | | | | | | | | | | | | |
| Feb. 11 | South Alabama | | | | | | | | | | | | |
| Feb. 16 | at North Texas | | | | | | | | | | | | |
| Feb. 18 | at Denver | | | | | | | | | | | | |
| Feb. 23 | Middle Tennessee | | | | | | | | | | | | |
| Feb. 25 | at UL-Lafayette | | | | | | | | | | | | |

MINGO'S CAREER STATISTICS

| YEAR | GP-GS | MIN/AVG | FG-A | PCT | 3FG-A | PCT | FT-A | PCT | OFF-DEF-TOT | AVG | PF-FO | AST | TO | BLK | STL | PTS | AVG |
|--------------|--------------|------------------|----------------|-------------|---------------|-------------|--------------|-------------|-------------------|------------|--------------|-----------|-----------|----------|-----------|------------|------------|
| 2010-11 | 31-30 | 1038/33.5 | 111-295 | .376 | 45-153 | .294 | 28-42 | .667 | 21-126-147 | 4.7 | 83-2 | 40 | 60 | 4 | 44 | 295 | 9.5 |
| 2011-12 | 10-6 | 211/21.1 | 32-77 | .416 | 6-19 | .316 | 7-12 | .583 | 10-35-45 | 4.5 | 22-0 | 13 | 12 | 3 | 3 | 77 | 7.7 |
| TOTAL | 41-36 | 1249/30.5 | 143-372 | .384 | 51-172 | .297 | 35-54 | .648 | 31-161-192 | 4.7 | 105-2 | 53 | 72 | 7 | 47 | 372 | 9.1 |



33 D'ANDRE MARTIN

Freshman • Guard • 6-2 • 195
Monroe, La. • Richwood HS

2011-12

- Joined the team as a walk-on.
- Nephew of former ULM basketball player Terry Martin.
- Made his ULM debut at Tennessee (Nov. 16).
- Recorded a steal against Harding (Nov. 26).

2010-11

- District 2-3A Most Valuable Player for Richwood High School.
- Louisiana Writers Association First-Team All-State selection.
- Selected to All-Northeast Louisiana Team.
- Averaged 22 points, 12 rebounds, four assists and three steals per game.
- Helped Richwood to the Louisiana Class 3A semifinals.

SEASON/CAREER HIGHS**Points**

Season: n/a
Career: n/a

Field Goals

Season: n/a
Career: n/a

Field Goal Attempts

Season: 1 (twice)
Career: 1 (twice)

3-Point Field Goals

Season: n/a
Career: n/a

3-Point Attempts

Season: n/a
Career: n/a

Free Throws

Season: n/a
Career: n/a

Free Throw Attempts

Season: n/a
Career: n/a

Rebounds

Season: n/a
Career: n/a

Offensive Rebounds

Season: n/a
Career: n/a

Defensive Rebounds

Season: n/a
Career: n/a

Assists

Season: n/a
Career: n/a

Turnovers

Season: 2, at Tennessee (11/16/11)
Career: 2, at Tennessee (11/16/11)

Blocks

Season: n/a
Career: n/a

Steals

Season: 1, vs. Harding (11/26/11)
Career: 1, vs. Harding (11/26/11)

Minutes

Season: 3, vs. Harding (11/26/11)
Career: 3, vs. Harding (11/26/11)

MISCELLANEOUS STATS

| | 11-12 | Career |
|-------------------------|-------|--------|
| Double-figure Points: | 0 | 0 |
| Double-figure Rebounds: | 0 | 0 |
| 20-Plus Points | 0 | 0 |
| 30-Plus Points | 0 | 0 |
| Led Team in Scoring: | 0 | 0 |
| Led Team in Rebounding | 0 | 0 |
| Led Team in Assists | 0 | 0 |
| Led Team in Blocks | 0 | 0 |
| Led Team in Steals | 0 | 0 |
| Double-Doubles: | 0 | 0 |

2011-12 SEASON GAME-BY-GAME

| Date | Opponent | gs | min | fg-a | 3fg-a | ft-a | o-d-t | pf | a | to | blk | stl | pts |
|---------|---------------------------|--------------|-----|------|-------|------|-------|----|---|----|-----|-----|-----|
| Nov. 11 | at Ole Miss | Did Not Play | | | | | | | | | | | |
| Nov. 14 | Indiana State | Did Not Play | | | | | | | | | | | |
| Nov. 16 | at Tennessee | 2 | | 0-0 | 0-0 | 0-0 | 0-0-0 | 0 | 0 | 2 | 0 | 0 | 0 |
| Nov. 19 | at Southeastern Louisiana | Did Not Play | | | | | | | | | | | |
| Nov. 21 | at Mississippi State | 1 | | 0-1 | 0-0 | 0-0 | 0-0-0 | 0 | 0 | 0 | 0 | 0 | 0 |
| Nov. 26 | Harding | 3 | | 0-1 | 0-0 | 0-0 | 0-0-0 | 1 | 0 | 1 | 0 | 1 | 0 |
| Nov. 28 | at Nicholls State | Did Not Play | | | | | | | | | | | |
| Dec. 3 | Louisiana Tech | Did Not Play | | | | | | | | | | | |
| Dec. 10 | at Texas A&M | Did Not Play | | | | | | | | | | | |
| Dec. 12 | Nicholls State | Did Not Play | | | | | | | | | | | |
| Dec. 15 | Northwestern State | | | | | | | | | | | | |
| Dec. 19 | at UNLV | | | | | | | | | | | | |
| Dec. 21 | at Indiana State | | | | | | | | | | | | |
| Dec. 29 | Western Kentucky | | | | | | | | | | | | |
| Dec. 31 | Arkansas State | | | | | | | | | | | | |
| Jan. 5 | at Florida Atlantic | | | | | | | | | | | | |
| Jan. 7 | at FIU | | | | | | | | | | | | |
| Jan. 12 | UALR | | | | | | | | | | | | |
| Jan. 14 | North Texas | | | | | | | | | | | | |
| Jan. 19 | Denver | | | | | | | | | | | | |
| Jan. 21 | at Troy | | | | | | | | | | | | |
| Jan. 28 | UL-Lafayette | | | | | | | | | | | | |
| Feb. 2 | at Arkansas State | | | | | | | | | | | | |
| Feb. 4 | at UALR | | | | | | | | | | | | |
| Feb. 11 | South Alabama | | | | | | | | | | | | |
| Feb. 16 | at North Texas | | | | | | | | | | | | |
| Feb. 18 | at Denver | | | | | | | | | | | | |
| Feb. 23 | Middle Tennessee | | | | | | | | | | | | |
| Feb. 25 | at UL-Lafayette | | | | | | | | | | | | |

MARTIN'S CAREER STATISTICS

| YEAR | GP-GS | MIN/AVG | FG-A | PCT | 3FG-A | PCT | FT-A | PCT | OFF-DEF-TOT | AVG | PF-FO | AST | TO | BLK | STL | PTS | AVG |
|--------------|------------|--------------|------------|-------------|------------|-------------|------------|-------------|--------------|------------|------------|----------|----------|----------|----------|----------|------------|
| 2011-12 | 3-0 | 6/2.0 | 0-2 | .000 | 0-0 | .000 | 0-0 | .000 | 0-0-0 | 0.0 | 1-0 | 0 | 3 | 0 | 1 | 0 | 0.0 |
| TOTAL | 3-0 | 6/2.0 | 0-2 | .000 | 0-0 | .000 | 0-0 | .000 | 0-0-0 | 0.0 | 1-0 | 0 | 3 | 0 | 1 | 0 | 0.0 |



35 TREY LINDSEY

Freshman • Forward • 6-6 • 205
Austin, Texas • Bowie HS

2011-12

- Made his collegiate debut against Ole Miss (Nov. 11), scoring three points and pulling down four rebounds. Also Played in a team-high 30 minute.
- Made his first start against Indiana State (Nov. 14). Pulled down six rebounds in just 18 minutes of action.
- Had career highs in points (6) and 3-pointers (2) at Texas A&M (Dec. 10).
- Led the team with four assists against Nicholls State (Dec. 12).

HIGH SCHOOL

- Averaged 14 points, five rebounds and four assists as a senior for Bowie High School.
- Two-time second-team all-district selection.
- Helped Bowie to district championships in 2008 and 2010.

SEASON/CAREER HIGHS**Points**

Season: 6, at Texas A&M (12/10/11)
Career: 6, at Texas A&M (12/10/11)

Field Goals

Season: 2 (three times)
Career: 2 (three times)

Field Goal Attempts

Season: 4 (twice)
Career: 4 (twice)

3-Point Field Goals

Season: 2, at Texas A&M (12/10/11)
Career: 2, at Texas A&M (12/10/11)

3-Point Attempts

Season: 4, at Texas A&M (12/10/11)
Career: 4, at Texas A&M (12/10/11)

Free Throws

Season: 2 (twice)
Career: 2 (twice)

Free Throw Attempts

Season: 2 (three times)
Career: 2 (three times)

Rebounds

Season: 6, vs. Indiana State (11/14/11)
Career: 6, vs. Indiana State (11/14/11)

Offensive Rebounds

Season: 1 (three times)
Career: 1 (three times)

Defensive Rebounds

Season: 5, vs. Indiana State (11/14/11)
Career: 5, vs. Indiana State (11/14/11)

Assists

Season: 4, vs. Nicholls State (12/12/11)
Career: 4, vs. Nicholls State (12/12/11)

Turnovers

Season: 2 (three times)
Career: 2 (three times)

Blocks

Season: n/a
Career: n/a

Steals

Season: 1 (five times)
Career: 1 (five times)

Minutes

Season: 30, at Ole Miss (11/11/11)
Career: 30, at Ole Miss (11/11/11)

MISCELLANEOUS STATS

| | 11-12 | Career |
|-------------------------|-------|--------|
| Double-figure Points: | 0 | 0 |
| Double-figure Rebounds: | 0 | 0 |
| 20-Plus Points | 0 | 0 |
| 30-Plus Points | 0 | 0 |
| Led Team in Scoring: | 0 | 0 |
| Led Team in Rebounding | 0 | 0 |
| Led Team in Assists | 1 | 1 |
| Led Team in Blocks | 0 | 0 |
| Led Team in Steals | 2 | 2 |
| Double-Doubles: | 0 | 0 |

2011-12 SEASON GAME-BY-GAME

| Date | Opponent | gs | min | fg-a | 3fg-a | ft-a | o-d-t | pf | a | to | blk | stl | pts |
|---------|---------------------------|----|-----|------|-------|------|-------|----|---|----|-----|-----|-----|
| Nov. 11 | at Ole Miss | | 30 | 1-4 | 0-3 | 1-2 | 0-4-4 | 3 | 0 | 1 | 0 | 1 | 3 |
| Nov. 14 | Indiana State | * | 18 | 1-1 | 1-1 | 0-0 | 1-5-6 | 5 | 2 | 0 | 0 | 0 | 3 |
| Nov. 16 | at Tennessee | * | 20 | 1-3 | 0-1 | 2-2 | 0-4-4 | 5 | 0 | 1 | 0 | 1 | 4 |
| Nov. 19 | at Southeastern Louisiana | | 21 | 0-3 | 0-1 | 2-2 | 1-3-4 | 1 | 0 | 0 | 0 | 0 | 2 |
| Nov. 21 | at Mississippi State | | 16 | 1-1 | 0-0 | 0-0 | 0-1-1 | 2 | 2 | 0 | 0 | 1 | 2 |
| Nov. 26 | Harding | | 15 | 1-1 | 1-1 | 0-0 | 0-2-2 | 4 | 1 | 2 | 0 | 1 | 3 |
| Nov. 28 | at Nicholls State | * | 20 | 1-2 | 0-1 | 0-0 | 1-2-3 | 3 | 3 | 1 | 0 | 0 | 2 |
| Dec. 3 | Louisiana Tech | * | 21 | 2-3 | 0-0 | 0-0 | 0-0-0 | 1 | 0 | 2 | 0 | 0 | 4 |
| Dec. 10 | at Texas A&M | | 21 | 2-4 | 2-4 | 0-0 | 0-0-0 | 4 | 0 | 0 | 0 | 0 | 6 |
| Dec. 12 | Nicholls State | | 21 | 2-5 | 0-1 | 1-2 | 2-0-2 | 5 | 4 | 2 | 0 | 1 | 5 |
| Dec. 15 | Northwestern State | | | | | | | | | | | | |
| Dec. 19 | at UNLV | | | | | | | | | | | | |
| Dec. 21 | at Indiana State | | | | | | | | | | | | |
| Dec. 29 | Western Kentucky | | | | | | | | | | | | |
| Dec. 31 | Arkansas State | | | | | | | | | | | | |
| Jan. 5 | at Florida Atlantic | | | | | | | | | | | | |
| Jan. 7 | at FIU | | | | | | | | | | | | |
| Jan. 12 | UALR | | | | | | | | | | | | |
| Jan. 14 | North Texas | | | | | | | | | | | | |
| Jan. 19 | Denver | | | | | | | | | | | | |
| Jan. 21 | at Troy | | | | | | | | | | | | |
| Jan. 28 | UL-Lafayette | | | | | | | | | | | | |
| Feb. 2 | at Arkansas State | | | | | | | | | | | | |
| Feb. 4 | at UALR | | | | | | | | | | | | |
| Feb. 11 | South Alabama | | | | | | | | | | | | |
| Feb. 16 | at North Texas | | | | | | | | | | | | |
| Feb. 18 | at Denver | | | | | | | | | | | | |
| Feb. 23 | Middle Tennessee | | | | | | | | | | | | |
| Feb. 25 | at UL-Lafayette | | | | | | | | | | | | |

LINDSEY'S CAREER STATISTICS

| YEAR | GP-GS | MIN/AVG | FG-A | PCT | 3FG-A | PCT | FT-A | PCT | OFF-DEF-TOT | AVG | PF-FO | AST | TO | BLK | STL | PTS | AVG |
|--------------|-------------|-----------------|--------------|-------------|-------------|-------------|------------|-------------|----------------|------------|-------------|-----------|----------|----------|----------|-----------|------------|
| 2011-12 | 10-4 | 203/20.3 | 12-27 | .444 | 4-13 | .308 | 6-8 | .750 | 5-21-26 | 2.6 | 33-3 | 12 | 9 | 0 | 5 | 34 | 3.4 |
| TOTAL | 10-4 | 203/20.3 | 12-27 | .444 | 4-13 | .308 | 6-8 | .750 | 5-21-26 | 2.6 | 33-3 | 12 | 9 | 0 | 5 | 34 | 3.4 |

**41 FABIO RIBEIRO**

Senior • Center • 6-10 • 250

Caetonopolis, Brazil • New Mexico JC

2011-12

- Had eight points and seven rebounds against Tennessee (Nov. 16).
- Recorded a season-best 10 points and seven rebounds at Nicholls State (Nov. 28).
- Had a season-high eight rebounds in just 16 minutes against Louisiana Tech (Dec. 3).
- Pulled down a career-best five offensive rebounds at Texas A&M (Dec. 10).

2010-11

- Appeared in 29 games, making 12 starts.
- Averaged 3.3 points and 2.5 rebounds per game.
- Shot 46.4 percent from the field (39-of-84) and 48.6 percent from the free-throw line (17-of-35).
- Had a career-best 15 points on 6-of-9 shooting at UTEP (Dec. 15).
- Grabbed a career-high 10 rebounds in the season opener at Texas Tech (Nov. 12).
- Played a career-high 34 minutes against Illinois State (Nov. 27), recording a career-best two blocks.

SEASON/CAREER HIGHS**Points**Season: 8, at Tennessee (11/16/11)
Career: 15, at UTEP (12/15/10)**Field Goals**Season: 4, at Tennessee (11/16/11)
Career: 6, at UTEP (12/15/10)**Field Goal Attempts**Season: 11, at Tennessee (11/16/11)
Career: 11, at Tennessee (11/16/11)**3-Point Field Goals**Season: n/a
Career: 1, at North Texas (2/19/11)**3-Point Attempts**Season: n/a
Career: 2, at North Texas (2/19/11)**Free Throws**Season: 4, at Nicholls State (11/28/11)
Career: 4, at Nicholls State (11/28/11)**Free Throw Attempts**Season: 7, at Nicholls State (11/28/11)
Career: 7, at Nicholls State (11/28/11)**Rebounds**Season: 8, vs. Louisiana Tech (12/3/11)
Career: 10, at Texas Tech (11/12/10)**Offensive Rebounds**Season: 5, at Texas A&M (12/10/11)
Career: 5, at Texas A&M (12/10/11)**Defensive Rebounds**Season: 7, at Tennessee (11/16/11)
Career: 8, at Texas Tech (11/12/10)**Assists**Season: 1 (four times)
Career: 2 (twice)**Turnovers**Season: 5, at Ole Miss (11/11/11)
Career: 5, at Ole Miss (11/11/11)**Blocks**Season: 1 (three times)
Career: 2, at Illinois State (11/27/10)**Steals**Season: 1 (three times)
Career: 2, vs. UALR (2/12/11)**Minutes**Season: 33, at Tennessee (11/16/11)
Career: 34, at Illinois State (11/27/10)**MISCELLANEOUS STATS**

| | 11-12 | Career |
|-------------------------|-------|--------|
| Double-figure Points: | 1 | 2 |
| Double-figure Rebounds: | 0 | 1 |
| 20-Plus Points | 0 | 0 |
| 30-Plus Points | 0 | 0 |
| Led Team in Scoring: | 0 | 1 |
| Led Team in Rebounding | 5 | 7 |
| Led Team in Assists | 0 | 1 |
| Led Team in Blocks | 1 | 4 |
| Led Team in Steals | 1 | 2 |
| Double-Doubles: | 0 | 0 |

2011-12 SEASON GAME-BY-GAME

| Date | Opponent | gs | min | fg-a | 3fg-a | ft-a | o-d-t | pf | a | to | blk | stl | pts |
|---------|---------------------------|----|-----|------|-------|------|-------|----|---|----|-----|-----|-----|
| Nov. 11 | at Ole Miss | * | 29 | 2-7 | 0-0 | 1-2 | 0-6-6 | 4 | 1 | 5 | 0 | 0 | 5 |
| Nov. 14 | Indiana State | * | 21 | 3-10 | 0-0 | 0-0 | 2-2-4 | 2 | 1 | 3 | 0 | 0 | 6 |
| Nov. 16 | at Tennessee | * | 33 | 4-11 | 0-0 | 0-0 | 0-7-7 | 3 | 0 | 0 | 1 | 1 | 8 |
| Nov. 19 | at Southeastern Louisiana | | 20 | 1-1 | 0-0 | 0-0 | 0-3-3 | 1 | 0 | 1 | 0 | 1 | 2 |
| Nov. 21 | at Mississippi State | * | 24 | 1-1 | 0-0 | 0-0 | 1-4-5 | 2 | 0 | 3 | 1 | 0 | 2 |
| Nov. 26 | Harding | * | 14 | 2-6 | 0-0 | 0-0 | 1-3-4 | 2 | 0 | 1 | 0 | 0 | 4 |
| Nov. 28 | at Nicholls State | | 25 | 3-5 | 0-0 | 4-7 | 2-5-7 | 3 | 1 | 1 | 0 | 1 | 10 |
| Dec. 3 | Louisiana Tech | * | 16 | 1-2 | 0-0 | 0-0 | 2-6-8 | 1 | 0 | 0 | 0 | 0 | 2 |
| Dec. 10 | at Texas A&M | | 20 | 2-6 | 0-0 | 2-2 | 5-2-7 | 1 | 1 | 2 | 1 | 0 | 6 |
| Dec. 12 | Nicholls State | | 11 | 1-4 | 0-0 | 0-0 | 2-0-2 | 0 | 0 | 0 | 0 | 0 | 2 |
| Dec. 15 | Northwestern State | | | | | | | | | | | | |
| Dec. 19 | at UNLV | | | | | | | | | | | | |
| Dec. 21 | at Indiana State | | | | | | | | | | | | |
| Dec. 29 | Western Kentucky | | | | | | | | | | | | |
| Dec. 31 | Arkansas State | | | | | | | | | | | | |
| Jan. 5 | at Florida Atlantic | | | | | | | | | | | | |
| Jan. 7 | at FIU | | | | | | | | | | | | |
| Jan. 12 | UALR | | | | | | | | | | | | |
| Jan. 14 | North Texas | | | | | | | | | | | | |
| Jan. 19 | Denver | | | | | | | | | | | | |
| Jan. 21 | at Troy | | | | | | | | | | | | |
| Jan. 28 | UL-Lafayette | | | | | | | | | | | | |
| Feb. 2 | at Arkansas State | | | | | | | | | | | | |
| Feb. 4 | at UALR | | | | | | | | | | | | |
| Feb. 11 | South Alabama | | | | | | | | | | | | |
| Feb. 16 | at North Texas | | | | | | | | | | | | |
| Feb. 18 | at Denver | | | | | | | | | | | | |
| Feb. 23 | Middle Tennessee | | | | | | | | | | | | |
| Feb. 25 | at UL-Lafayette | | | | | | | | | | | | |

RIBEIRO'S CAREER STATISTICS

| YEAR | GP-GS | MIN/AVG | FG-A | PCT | 3FG-A | PCT | FT-A | PCT | OFF-DEF-TOT | AVG | PF-FO | AST | TO | BLK | STL | PTS | AVG |
|--------------|--------------|-----------------|---------------|-------------|------------|-------------|--------------|-------------|------------------|------------|-------------|-----------|-----------|-----------|-----------|------------|------------|
| 2009-10 | 6-1 | 50/8.3 | 3-7 | .429 | 0-0 | .000 | 0-0 | .000 | 4-5-9 | 1.5 | 9-0 | 0 | 2 | 1 | 0 | 6 | 1.0 |
| 2010-11 | 29-12 | 517/17.8 | 39-84 | .464 | 1-2 | .500 | 17-35 | .486 | 29-44-73 | 2.5 | 67-2 | 7 | 33 | 6 | 7 | 96 | 3.3 |
| 2011-12 | 10-6 | 213/21.3 | 20-53 | .377 | 0-0 | .000 | 7-11 | .636 | 15-38-53 | 5.3 | 19-0 | 4 | 16 | 3 | 3 | 47 | 4.7 |
| TOTAL | 45-19 | 780/17.3 | 62-144 | .431 | 1-2 | .500 | 24-46 | .522 | 48-87-135 | 3.0 | 95-2 | 11 | 51 | 10 | 10 | 149 | 3.3 |



55 FRED BROWN
 Senior • Guard • 6-2 • 190
 West Palm Beach, Fla. • Kansas State

2011-12

- Preseason Third-Team All-Sun Belt selection.
- Had no turnovers for just the second time in his ULM career against Indiana State (Nov. 14).
- Recorded a game-high 18 points, including four 3-pointers at Tennessee (Nov. 16).
- Dished out a season-best six assists at Southeastern Louisiana (Nov. 19).
- Scored a season-high 21 points on 7-of-12 shooting at Mississippi State (Nov. 21).

2010-11

- Third-Team All-Louisiana selection.
- Made starts in 28 of the 29 games he played.
- Averaged a team-high 13.8 points per game.
- Finished the season ranked fifth in the Sun Belt Conference in 3-point makes per game (2.1) and 10th in the conference in scoring.
- Shot 38.6 percent from the field (149-of-386), 37.5 percent from 3-point range (60-of-160) and 77.4 percent from the free-throw line (41-of-53).
- Scored 20 points or more five times and led the team in scoring 10 times.
- Knocked in four or more 3-pointers in seven different games.
- Upped his scoring average to 14.7 points per game in conference play.
- Had a season-high 25 points, including seven 3-pointers in the season opener at Texas Tech (Nov. 12).
- Also had 25 points in a 67-65 victory at South Alabama (Jan. 15).

SEASON/CAREER HIGHS**Points**

Season: 21, at Mississippi State (11/21/11)
 Career: 26, vs. Chicago State (1/5/09)

Field Goals

Season: 8, at Southeastern La. (11/19/11)
 Career: 9 (three times)

Field Goal Attempts

Season: 18, at Southeastern La. (11/19/11)
 Career: 28, at Louisiana Tech (12/4/10)

3-Point Field Goals

Season: 4 (twice)
 Career: 7, at Texas Tech (11/12/10)

3-Point Attempts

Season: 8, at Tennessee (11/16/11)
 Career: 13, at Louisiana Tech (12/4/10)

Free Throws

Season: 5 (twice)
 Career: 6 (three times)

Free Throw Attempts

Season: 7, vs. Indiana State (11/14/11)
 Career: 8, vs. Chicago State (1/5/09)

Rebounds

Season: 7, vs. Indiana State (11/14/11)
 Career: 7 (twice)

Offensive Rebounds

Season: 2 (twice)
 Career: 4 (four times)

Defensive Rebounds

Season: 7, vs. Indiana State (11/14/11)
 Career: 7, vs. Indiana State (11/14/11)

Assists

Season: 6, at Southeastern La. (11/19/11)
 Career: 7, at Louisiana Tech (12/4/10)

Turnovers

Season: 5 (twice)
 Career: 7 (twice)

Blocks

Season: n/a
 Career: 1 (eight times)

Steals

Season: 3, at Southeastern La. (11/19/11)
 Career: 4 (twice)

Minutes

Season: 40, at Southeastern La. (11/19/11)
 Career: 40 (seven times)

MISCELLANEOUS STATS

| | 11-12 | Career |
|-------------------------|-------|--------|
| Double-figure Points: | 7 | 42 |
| Double-figure Rebounds: | 0 | 0 |
| 20-Plus Points | 1 | 9 |
| 30-Plus Points | 0 | 0 |
| Led Team in Scoring: | 6 | 16 |
| Led Team in Rebounding | 1 | 1 |
| Led Team in Assists | 2 | 15 |
| Led Team in Blocks | 0 | 3 |
| Led Team in Steals | 5 | 17 |
| Double-Doubles: | 0 | 0 |

2011-12 SEASON GAME-BY-GAME

| Date | Opponent | gs | min | fg-a | 3fg-a | ft-a | o-d-t | pf | a | to | blk | stl | pts |
|---------|---------------------------|----|-----|------|-------|------|-------|----|---|----|-----|-----|-----|
| Nov. 11 | at Ole Miss | * | 25 | 2-12 | 1-3 | 2-4 | 1-0-1 | 1 | 1 | 1 | 0 | 1 | 7 |
| Nov. 14 | Indiana State | * | 30 | 4-13 | 2-4 | 5-7 | 0-7-7 | 3 | 5 | 0 | 0 | 0 | 15 |
| Nov. 16 | at Tennessee | * | 28 | 6-14 | 4-8 | 2-2 | 0-1-1 | 4 | 2 | 2 | 0 | 2 | 18 |
| Nov. 19 | at Southeastern Louisiana | * | 40 | 8-18 | 0-4 | 0-0 | 1-2-3 | 0 | 6 | 3 | 0 | 3 | 16 |
| Nov. 21 | at Mississippi State | * | 34 | 7-12 | 3-5 | 4-4 | 1-1-2 | 0 | 2 | 3 | 0 | 2 | 21 |
| Nov. 26 | Harding | * | 27 | 7-14 | 3-6 | 0-0 | 0-1-1 | 0 | 1 | 1 | 0 | 1 | 17 |
| Nov. 28 | at Nicholls State | | 29 | 5-10 | 3-5 | 2-2 | 2-1-3 | 2 | 3 | 2 | 0 | 1 | 15 |
| Dec. 3 | Louisiana Tech | | 26 | 4-10 | 4-6 | 5-6 | 2-3-5 | 5 | 2 | 5 | 0 | 1 | 17 |
| Dec. 10 | at Texas A&M | * | 33 | 3-13 | 1-9 | 0-0 | 0-0-0 | 1 | 1 | 5 | 0 | 1 | 7 |
| Dec. 12 | Nicholls State | * | 9 | 2-6 | 1-3 | 0-0 | 2-1-3 | 0 | 0 | 2 | 0 | 0 | 5 |
| Dec. 15 | Northwestern State | | | | | | | | | | | | |
| Dec. 19 | at UNLV | | | | | | | | | | | | |
| Dec. 21 | at Indiana State | | | | | | | | | | | | |
| Dec. 29 | Western Kentucky | | | | | | | | | | | | |
| Dec. 31 | Arkansas State | | | | | | | | | | | | |
| Jan. 5 | at Florida Atlantic | | | | | | | | | | | | |
| Jan. 7 | at FIU | | | | | | | | | | | | |
| Jan. 12 | UALR | | | | | | | | | | | | |
| Jan. 14 | North Texas | | | | | | | | | | | | |
| Jan. 19 | Denver | | | | | | | | | | | | |
| Jan. 21 | at Troy | | | | | | | | | | | | |
| Jan. 28 | UL-Lafayette | | | | | | | | | | | | |
| Feb. 2 | at Arkansas State | | | | | | | | | | | | |
| Feb. 4 | at UALR | | | | | | | | | | | | |
| Feb. 11 | South Alabama | | | | | | | | | | | | |
| Feb. 16 | at North Texas | | | | | | | | | | | | |
| Feb. 18 | at Denver | | | | | | | | | | | | |
| Feb. 23 | Middle Tennessee | | | | | | | | | | | | |
| Feb. 25 | at UL-Lafayette | | | | | | | | | | | | |

BROWN'S CAREER STATISTICS

| YEAR | GP-GS | MIN/AVG | FG-A | PCT | 3FG-A | PCT | FT-A | PCT | OFF-DEF-TOT | AVG | PF-FO | AST | TO | BLK | STL | PTS | AVG |
|--------------|---------------|------------------|----------------|-------------|----------------|-------------|---------------|-------------|-------------------|------------|--------------|------------|------------|----------|-----------|------------|------------|
| 2007-08 | 27-0 | 248/9.2 | 39-98 | .398 | 20-53 | .377 | 8-16 | .500 | 12-22-34 | 1.3 | 20-0 | 18 | 13 | 3 | 12 | 106 | 3.9 |
| 2008-09 | 34-2 | 695/20.4 | 99-235 | .421 | 54-130 | .415 | 22-37 | .595 | 17-38-55 | 1.6 | 53-1 | 45 | 44 | 2 | 23 | 274 | 8.1 |
| 2010-11 | 29-28 | 946/32.6 | 149-386 | .386 | 60-160 | .375 | 41-53 | .774 | 16-46-62 | 2.1 | 63-4 | 77 | 95 | 3 | 40 | 399 | 13.8 |
| 2011-12 | 10-8 | 281/28.1 | 48-122 | .393 | 22-53 | .415 | 20-25 | .800 | 9-17-26 | 2.6 | 16-1 | 23 | 24 | 0 | 12 | 138 | 13.8 |
| TOTAL | 100-38 | 2170/21.7 | 335-841 | .398 | 156-396 | .394 | 91-131 | .695 | 54-123-177 | 1.8 | 152-6 | 163 | 176 | 8 | 87 | 917 | 9.2 |



2011-12 ULM MEN'S BASKETBALL

| Exhibition 1 • Nov. 1 • Fant-Ewing Coliseum • Monroe, La. | | | |
|---|-------------------|----|--|
| | Lubbock Christian | 63 | |
| | ULM | 67 | |

MONROE, La. - Fred Brown scored a game-high 21 points and Hugh Mingo added 18 to lead ULM to a 67-63 exhibition win over Lubbock Christian Tuesday night inside Fant-Ewing Coliseum.

ULM converted 50 percent of its field goals in the second half (15-30) and made 10 of its 14 free throws to spark the victory after the teams were tied 26-all at halftime.

Fabio Ribeiro connected on 4-of-6 field goals to finish with 12 points and seven rebounds, while Charles Winborne added five points and two rebounds in his first ULM action after sitting out last season due to NCAA transfer rules. Brown and Mingo were co-leaders in rebounds with eight boards a piece.

ULM went on a 14-6 spurt, powered by a Winborne jumper and a pair of Brown baskets to claim a 46-42 advantage. Then Ribeiro found an offensive groove, scoring nine of the next 12 Warhawk points to give the hosts a 58-53 lead.

Jumpers by Brown and Ribeiro would push the Warhawks in front 62-57. A late 6-3 run by the Chaps was not enough, as three Mingo free throws down the stretch would close the game for ULM.

The Warhawks opened the contest on a 6-1 run highlighted by 3-pointers from Mingo and Brown. The Chaps responded with a quick 10-0 run of their own, capped by two Douglas Williams field goals from beyond the arc to jump in front 11-6.

A Brown free throw and a Mingo jumper pulled ULM within two (11-9) at the under-16 timeout. Then a Mingo jumper bookended a Brown 3-pointer to pull the Warhawks back on top 14-11.

Two free throws from Marcelis Hansberry ended a 9-0 Lubbock Christian run and vaulted the Warhawks on an explosive 10-0 surge. A 3-pointer from Brown, an and-one from Mingo and a layup from Ribeiro gave the hosts their biggest advantage of the first half 26-20.

The Chaps battled back, closing a 6-0 swing to send the game to the break tied 26-26. Brown paced the Warhawk attack with 10 points, followed by Mingo with nine. Hansberry added five points and four assists for ULM.

Lubbock Christian (0-1) hit its first five shots of the second half to open the game's biggest lead, 36-28. The Warhawks countered with a jumper from Christian Bibi Ndongo and a swish from Winborne to draw within four 36-32.

Anthony Brancato led Lubbock Christian with 19 points and eight rebounds, while Rashad Sample chipped in 18, all of which came in the second half.

| No. | Lubbock Christian | FG | 3FG | FT | R | F | TP | A | TO | B | S | MIN |
|--------|-------------------|---------------------|------|-----|----|----|----|----|----|---|---|-----|
| 05 | Plunkett, A. | 0-1 | 0-0 | 1-2 | 3 | 2 | 1 | 0 | 1 | 0 | 0 | 9 |
| 15 | Roberts, R. | 1-4 | 0-0 | 0-0 | 7 | 1 | 2 | 0 | 2 | 3 | 0 | 32 |
| 01 | Williams, D. | 4-10 | 2-5 | 0-0 | 5 | 3 | 10 | 2 | 4 | 0 | 1 | 29 |
| 20 | Sample, R. | 7-12 | 0-0 | 4-4 | 7 | 3 | 18 | 5 | 1 | 0 | 0 | 33 |
| 21 | Brancato, A. | 8-14 | 1-3 | 2-2 | 8 | 2 | 19 | 2 | 2 | 1 | 2 | 39 |
| 04 | Viera, J. | 1-1 | 0-0 | 0-0 | 3 | 4 | 2 | 0 | 3 | 0 | 2 | 8 |
| 12 | Kennedy, T. | 3-12 | 3-12 | 0-0 | 2 | 5 | 9 | 1 | 0 | 0 | 0 | 29 |
| 13 | English, J. | 1-3 | 0-2 | 0-1 | 2 | 2 | 2 | 0 | 0 | 0 | 0 | 7 |
| 14 | Oropeza, E. | 0-3 | 0-3 | 0-0 | 1 | 1 | 0 | 1 | 2 | 0 | 0 | 13 |
| 22 | Hunter, J. | 0-0 | 0-0 | 0-0 | 0 | 1 | 0 | 0 | 0 | 1 | 0 | 1 |
| TEAM | | 2 | | | | | | | | | | |
| TOTALS | | 25-60 | 6-25 | 7-9 | 40 | 24 | 63 | 11 | 15 | 5 | 5 | 200 |
| | | (417) (.240) (.778) | | | | | | | | | | |

| No. | ULM | FG | 3FG | FT | R | F | TP | A | TO | B | S | MIN |
|--------|-----------------|---------------------|------|-------|----|----|----|----|----|---|---|-----|
| 41 | Ribeiro, F. | 4-6 | 0-0 | 4-10 | 7 | 2 | 12 | 0 | 2 | 0 | 0 | 22 |
| 03 | Hansberry, M. | 2-10 | 1-3 | 2-2 | 3 | 1 | 7 | 5 | 0 | 0 | 2 | 25 |
| 04 | McCray, R. | 1-4 | 0-0 | 0-1 | 2 | 2 | 2 | 3 | 1 | 1 | 0 | 28 |
| 24 | Mingo, H. | 7-17 | 0-4 | 4-5 | 8 | 2 | 18 | 2 | 1 | 0 | 0 | 36 |
| 55 | Brown, F. | 7-17 | 4-10 | 3-4 | 8 | 3 | 21 | 3 | 3 | 0 | 2 | 31 |
| 05 | Bibi Ndongo, C. | 1-3 | 0-1 | 0-0 | 5 | 3 | 2 | 0 | 0 | 0 | 0 | 22 |
| 10 | Mackey, T. | 0-2 | 0-0 | 0-0 | 1 | 2 | 0 | 1 | 0 | 0 | 0 | 11 |
| 11 | Winborne, C. | 2-4 | 0-0 | 1-1 | 2 | 0 | 5 | 1 | 1 | 0 | 0 | 10 |
| 35 | Lindsey, T. | 0-1 | 0-1 | 0-0 | 1 | 1 | 0 | 1 | 1 | 0 | 1 | 15 |
| TEAM | | 3 | | | | | | | | | | |
| TOTALS | | 24-64 | 5-19 | 14-23 | 40 | 15 | 67 | 16 | 9 | 1 | 5 | 200 |
| | | (375) (.263) (.609) | | | | | | | | | | |

Technical Fouls: None

Officials: Raymond Natili, Forrest Sigler, James Buham

Attendance: n/a

Score by Half

| | | |
|------------------------|-------|----|
| Lubbock Christian..... | 26-37 | 63 |
| ULM | 26-41 | 67 |

| Exhibition 2 • Nov. 7 • Fant-Ewing Coliseum • Monroe, La. | | | |
|---|-----------------|----|--|
| | Philander Smith | 69 | |
| | ULM | 82 | |

MONROE, La. - ULM shot 53.7 percent from the field en route to an 82-69 exhibition victory over Philander Smith (Ark.) Monday evening inside Fant-Ewing Coliseum. The Warhawks finished with a 2-0 record in exhibition play and will open the regular season Friday at Ole Miss.

Senior guard Fred Brown led the way for ULM with 21 points and three assists while going 7-of-9 from the field. Senior guard Hugh Mingo chipped in 18 points, six rebound and three assists, and sophomore guard Charles Winborne notched his first double-digit scoring game in a ULM uniform with 10 points.

The Warhawks used an 11-1 run to build an 80-63 advantage, their largest of the game, with 3:35 remaining. Senior center Fabio Ribeiro started the run with a layup at the 7:19 mark. After a free throw from Philander Smith, the Warhawks reeled off nine straight points, capped by a layup from Brown.

Ribeiro finished with nine points and a game-high 12 rebounds in the game. ULM overwhelmed Philander Smith on the boards with a 42-20 edge. ULM also had 14 offensive rebounds and held a 42-14 advantage in points in the paint.

Brown did a majority of his work in the first half, going 4-of-4 from the field and finishing the half with 12 points. He knocked home a pair of 3-pointers in the final two minutes to give the Warhawks a 46-37 advantage at the break.

Demarkus Lipscomb and Ken Brown each had 23 points to lead the way for Philander Smith. The Panthers finished 7-of-21 from 3-point range and 24-32 from the free-throw line.

| No. | Philander Smith | FG | 3FG | FT | R | F | TP | A | TO | B | S | MIN |
|--------|-----------------|---------------------|------|-------|----|----|----|----|----|---|----|-----|
| 04 | Bell, B. | 1-7 | 1-6 | 7-7 | 2 | 4 | 10 | 2 | 3 | 0 | 1 | 25 |
| 54 | Egbe, J. | 0-1 | 0-0 | 0-0 | 3 | 5 | 0 | 0 | 0 | 1 | 5 | 17 |
| 02 | Sims, M. | 0-2 | 0-2 | 0-0 | 2 | 3 | 0 | 0 | 0 | 0 | 0 | 29 |
| 05 | Lipscomb, D. | 6-13 | 3-6 | 8-12 | 1 | 1 | 23 | 4 | 4 | 0 | 4 | 39 |
| 10 | Brown, K. | 8-18 | 2-6 | 5-6 | 4 | 5 | 23 | 4 | 7 | 0 | 0 | 34 |
| 03 | Howell, A. | 2-4 | 1-1 | 1-2 | 1 | 1 | 0 | 0 | 1 | 0 | 0 | 16 |
| 20 | King, A. | 0-0 | 0-0 | 0-0 | 1 | 1 | 0 | 0 | 1 | 0 | 0 | 3 |
| 30 | Dotson, M. | 1-1 | 0-0 | 1-2 | 2 | 0 | 3 | 0 | 1 | 0 | 0 | 9 |
| 44 | Dumas, J. | 0-1 | 0-0 | 2-3 | 3 | 1 | 2 | 0 | 0 | 0 | 1 | 17 |
| 50 | Riddles, G. | 1-1 | 0-0 | 0-0 | 1 | 2 | 2 | 0 | 2 | 0 | 0 | 11 |
| TEAM | | 0 | | | | | | | | | | |
| TOTALS | | 19-48 | 7-21 | 24-32 | 20 | 22 | 69 | 11 | 19 | 1 | 12 | 200 |
| | | (396) (.333) (.750) | | | | | | | | | | |

| No. | ULM | FG | 3FG | FT | R | F | TP | A | TO | B | S | MIN |
|--------|-----------------|---------------------|------|-------|----|----|----|----|----|---|---|-----|
| 05 | Bibi Ndongo, C. | 2-4 | 0-0 | 1-2 | 8 | 4 | 5 | 0 | 3 | 0 | 0 | 21 |
| 24 | Mingo, H. | 7-13 | 1-4 | 3-5 | 6 | 2 | 18 | 3 | 4 | 0 | 1 | 28 |
| 41 | Ribeiro, F. | 2-6 | 0-0 | 5-6 | 12 | 2 | 9 | 1 | 1 | 0 | 0 | 31 |
| 11 | Winborne, C. | 5-9 | 0-1 | 0-0 | 3 | 4 | 10 | 1 | 5 | 0 | 1 | 20 |
| 55 | Brown, F. | 7-9 | 3-4 | 4-4 | 3 | 2 | 21 | 3 | 4 | 0 | 1 | 28 |
| 03 | Hansberry, M. | 1-5 | 0-2 | 2-3 | 0 | 0 | 4 | 3 | 2 | 0 | 0 | 12 |
| 04 | McCray, R. | 2-2 | 0-0 | 1-2 | 5 | 4 | 5 | 2 | 6 | 0 | 1 | 18 |
| 10 | Mackey, T. | 2-3 | 2-3 | 0-0 | 0 | 3 | 6 | 0 | 1 | 0 | 0 | 16 |
| 35 | Lindsey, T. | 1-3 | 0-0 | 2-4 | 5 | 1 | 4 | 2 | 1 | 0 | 2 | 26 |
| TEAM | | 0 | | | | | | | | | | |
| TOTALS | | 29-54 | 6-14 | 18-26 | 42 | 22 | 82 | 15 | 27 | 0 | 6 | 200 |
| | | (537) (.429) (.692) | | | | | | | | | | |

Technical Fouls: Philander Smith-Brown, K. ULM-None

Officials: R-Shannon Cain, U1-Mitchell Ervin, U2-Earnie Phael

Attendance: n/a

Score by Half

| | | |
|-----------------------|-------|----|
| Philander Smith | 37-32 | 69 |
| ULM | 46-36 | 82 |

| Game 1 • Nov. 11 • Tad Smith Coliseum • Oxford, Miss. | | | |
|---|----------|----|--|
| | ULM | 38 | |
| | OLE MISS | 60 | |

OXFORD, Miss. - ULM put forth a valiant second-half effort, but it was not enough as Ole Miss powered to a 60-38 victory Friday night in the season opener for both squads. The Warhawks shot just 28.6 percent for the game and struggled at the free-throw line, going 7-of-18.

Senior guard Fred Brown led the Warhawks with seven points on 2-of-12 shooting. It was the first time ULM failed to have a player score in double figures since 2006 against Iowa State. Freshman Trent Mackey came off the bench to notch five points and five rebounds in his first collegiate game.

ULM put on a spectacular defense display in the second half as Ole Miss shot just 23.3 percent in the half. The Warhawks cut the lead to as low as 16 in the second half, but that is as close as they would get.

After the two teams traded baskets for the first 10 minute of the second half, the Warhawks embarked on a 6-0 run - fueled by a pair of Fabio Ribeiro layups - to get within 49-33 with 5:14 remaining. ULM held Ole Miss scoreless for over three minutes during that stretch.

A Terrance Henry free throw and a layup from Murphy Holloway catapulted the Rebels back in front 52-33 with 4:21 left.

Henry, a Monroe, La. native, led three Rebels in double figures with 15 points. Nick Williams added 13 points and Dundreous Nelson chipped in 12 points for the Rebels. Holloway pulled down a game-high 17 rebounds.

The Warhawks shot just 16.7 percent in the first half as Ole Miss stormed out to a 33-11 advantage at halftime. ULM converted 4 of 24 from the field and 1 of 7 from 3-point range. The Rebels countered by shooting 44.4 percent and outgaining ULM 26-12 on the boards.

Ole Miss broke the game open with a 24-6 run over the final 13:18 of the first half. Leading 18-8, Williams scored nine straight points for the Rebels, capped by an old-fashioned three-point play that gave Ole Miss a 24-10 advantage with 7:00 remaining.

The Rebels continued the run spearheaded by an aggressive defense which blocked six shots and forced nine ULM turnovers in the half. The Warhawks managed just one point - a Christian Bibi Ndongo free throw - in the last 7:26 of the half.

| No. | ULM | FG | 3FG | FT | R | F | TP | A | TO | B | S | MIN |
|--------|-----------------|---------------------|------|------|----|----|----|----|----|---|---|-----|
| 05 | Bibi Ndongo, C. | 1-3 | 0-0 | 2-6 | 5 | 2 | 4 | 0 | 1 | 0 | 0 | 21 |
| 41 | Ribeiro, F. | 2-7 | 0-0 | 1-2 | 6 | 4 | 5 | 1 | 5 | 0 | 0 | 29 |
| 11 | Winborne, C. | 2-6 | 1-3 | 1-2 | 2 | 3 | 6 | 3 | 1 | 1 | 0 | 23 |
| 24 | Mingo, H. | 1-5 | 0-2 | 0-0 | 0 | 4 | 2 | 0 | 3 | 1 | 1 | 18 |
| 55 | Brown, F. | 2-12 | 1-3 | 2-4 | 1 | 1 | 7 | 1 | 1 | 0 | 1 | 25 |
| 03 | Hansberry, M. | 0-2 | 0-0 | 0-0 | 1 | 1 | 0 | 4 | 2 | 0 | 1 | 15 |
| 04 | McCray, R. | 3-3 | 0-0 | 0-2 | 4 | 1 | 6 | 0 | 2 | 0 | 0 | 17 |
| 10 | Mackey, T. | 2-7 | 1-4 | 0-0 | 5 | 1 | 5 | 2 | 1 | 0 | 0 | 22 |
| 35 | Lindsey, T. | 1-4 | 0-3 | 1-2 | 4 | 3 | 3 | 0 | 1 | 0 | 1 | 30 |
| TEAM | | 6 | | | | | | | | | | |
| TOTALS | | 14-49 | 3-15 | 7-18 | 34 | 20 | 38 | 11 | 18 | 2 | 4 | 200 |
| | | (286) (.200) (.389) | | | | | | | | | | |

| No. | Ole Miss | FG | 3FG | FT | R | F | TP | A | TO | B | S | MIN |
|--------|--------------|---------------------|------|-------|----|----|----|---|----|---|---|-----|
| 01 | Henry, T. | 3-10 | 0-3 | 9-13 | 4 | 2 | 15 | 3 | 4 | 0 | 0 | 26 |
| 23 | Buckner, R. | 2-3 | 0-0 | 2-2 | 10 | 2 | 6 | 1 | 4 | 2 | 1 | 20 |
| 31 | Holloway, M. | 2-4 | 0-0 | 2-5 | 17 | 0 | 6 | 0 | 1 | 2 | 1 | 32 |
| 05 | Nelson, D. | 4-11 | 2-8 | 2-2 | 1 | 4 | 12 | 0 | 1 | 1 | 2 | 21 |
| 20 | Williams, N. | 5-11 | 2-6 | 1-1 | 3 | 1 | 13 | 1 | 2 | 0 | 1 | 31 |
| 04 | Cox, D. | 1-2 | 0-0 | 0-2 | 4 | 0 | 2 | 0 | 0 | 0 | 2 | 17 |
| 12 | Aniefiok, M. | 0-6 | 0-5 | 1-2 | 2 | 1 | 1 | 0 | 1 | 0 | 0 | 15 |
| 32 | Summers, J. | 2-9 | 1-4 | 0-0 | 2 | 4 | 5 | 3 | 2 | 1 | 1 | 27 |
| 34 | Jones, A. | 0-1 | 0-0 | 0-0 | 2 | 2 | 0 | 0 | 0 | 2 | 0 | 11 |
| TEAM | | 3 | | | | | | | | | | |
| TOTALS | | 19-57 | 5-26 | 17-27 | 48 | 16 | 60 | 8 | 15 | 8 | 8 | 200 |
| | | (333) (.192) (.630) | | | | | | | | | | |

Technical Fouls: None

Officials: Gary Maxwell, Steven Andersson, Tony Henderson

Attendance: 5,729

Score by Half

| | | |
|----------------|-------|----|
| ULM | 11-27 | 38 |
| Ole Miss | 33-27 | 60 |





2011-12 ULM MEN'S BASKETBALL

| Game 5 - Nov. 22 - Humphrey Coliseum - Starkville, Miss. | | | | |
|--|-------------------|----|--|----|
| | ULM | 63 | | 78 |
| | MISSISSIPPI STATE | | | |

STARKVILLE, Miss. - No. 24 Mississippi State used a pair of big runs to defeat ULM 78-63 Monday evening inside Humphrey Coliseum. It marked the end to a tough start to the season for the Warhawks (0-5) in which they played five games in 11 days - four on the road.

The Bulldogs had runs of 14-0 (first half) and 18-1 (second half) to win their fourth straight and improve to 5-1 on the season. The Warhawks did not make it easy though as they led by as many as eight in the first half and trailed just 31-26 at the break.

Senior guard Fred Brown turned in another stellar performance for the Warhawks with a season-high 21 points on 7-of-12 shooting. Brown connected on 3-of-5 from 3-point range while also tallying two assists and two steals.

ULM upped its shooting for the fifth straight game and finished the contest shooting 49.0 percent from the field. Mississippi State countered by shooting 50.8 percent from the field and knocking in 10 3-pointers.

With the Warhawks leading by two, Mississippi State used an 18-1 run to take a 57-42 advantage with 10:10 remaining in the game. The run spanned 5:57 and was capped by a 3-pointer by Dee Bost. Bost led the Bulldogs with 21 points and five assists in the game, including four 3-pointers.

Rodney Hood chipped in 20 points and eight assists and Brian Bryant finished with 17 points, 10 rebounds and four assists for the Bulldogs.

Mississippi State took advantage of its size with a 36-16 advantage in the paint and a 17-3 edge in second-chance points. ULM hung in on the boards against the Bulldogs with just a 32-26 deficit.

Sophomore guard Marcelis Hansberry also had a season-best night with 13 points, while senior guard Hugh Mingo and sophomore guard Charles Winborne each contributed nine points for ULM.

ULM hit four of its first five shots of the game, including a pair of 3-pointers by Brown, to take an early 11-5 advantage. Hansberry scored on a layup with 13:51 to give the Warhawks a 15-10 lead.

Mississippi State reeled off five straight points - all from Jalen Steele -- to tie the score at 15-15 with 12:13 remaining in the first half before ULM used an 8-0 run to build its largest lead of the game.

Freshman Trey Lindsey hit a jumper just inside in the 3-point line and R.J. McCray followed with a jumper of his own to vault the Warhawks in front 19-15 at the 9:08 mark of the first half. Hugh Mingo connected on a layup and Hansberry scored in transition to give ULM its largest lead at 23-15 with 7:49 remaining before halftime.

Mississippi State quickly responded, embarking on a 14-0 run spanning over seven minutes, to take a 29-23 advantage. Brown broke the run with a 3-pointer at the 1:18 mark to pull the Warhawks within three points.

The Warhawks opened the second half on 9-4 run to knot the score at 35-35 with 16:03 remaining. A jumper by Hansberry gave ULM its final lead at 41-39 with 14:31 left in the game.

| No. | ULM | FG | 3FG | FT | R | F | TP | A | TO | B | S | MIN |
|--------|---------------|----------------------|------|-----|----|---|----|----|----|---|---|-----|
| 41 | Ribeiro, F. | 1-1 | 0-0 | 0-0 | 5 | 2 | 2 | 0 | 3 | 1 | 0 | 24 |
| 03 | Hansberry, M. | 6-13 | 0-2 | 1-2 | 2 | 1 | 13 | 0 | 0 | 0 | 1 | 33 |
| 10 | Mackey, T. | 2-6 | 1-4 | 0-0 | 3 | 1 | 5 | 3 | 3 | 0 | 0 | 28 |
| 11 | Winborne, C. | 4-9 | 1-3 | 0-0 | 4 | 1 | 9 | 0 | 2 | 0 | 0 | 25 |
| 55 | Brown, F. | 7-12 | 3-5 | 4-4 | 2 | 0 | 21 | 2 | 3 | 0 | 2 | 34 |
| 04 | McCray, R. | 1-2 | 0-0 | 0-0 | 2 | 1 | 2 | 3 | 2 | 0 | 2 | 22 |
| 23 | Smith, R. | 0-0 | 0-0 | 0-0 | 0 | 0 | 0 | 0 | 0 | 0 | 0 | 1 |
| 24 | Mingo, H. | 3-6 | 1-2 | 2-3 | 5 | 1 | 9 | 1 | 0 | 0 | 0 | 16 |
| 33 | Martin, D. | 0-1 | 0-0 | 0-0 | 0 | 0 | 0 | 0 | 0 | 0 | 0 | 1 |
| 35 | Lindsey, T. | 1-1 | 0-0 | 0-0 | 1 | 2 | 2 | 2 | 0 | 0 | 1 | 16 |
| TEAM | | 2 | | | | | | | | | | |
| TOTALS | | 25-51 | 6-16 | 7-9 | 26 | 9 | 63 | 11 | 14 | 1 | 6 | 200 |
| | | (.490) (.375) (.778) | | | | | | | | | | |

| No. | Mississippi State | FG | 3FG | FT | R | F | TP | A | TO | B | S | MIN |
|--------|-------------------|----------------------|-------|-----|----|---|----|----|----|---|---|-----|
| 30 | Lewis, W. | 2-2 | 0-0 | 0-0 | 5 | 3 | 4 | 1 | 0 | 0 | 0 | 32 |
| 00 | Steele, J. | 3-9 | 2-7 | 0-0 | 2 | 1 | 8 | 5 | 2 | 0 | 0 | 25 |
| 03 | Bost, D. | 7-16 | 4-9 | 3-4 | 3 | 4 | 21 | 5 | 1 | 0 | 3 | 31 |
| 04 | Hood, R. | 9-13 | 2-4 | 0-0 | 8 | 0 | 20 | 1 | 1 | 0 | 2 | 36 |
| 22 | Bryant, B. | 7-11 | 0-1 | 3-4 | 10 | 0 | 17 | 4 | 0 | 3 | 3 | 35 |
| 11 | Clayton, R. | 0-0 | 0-0 | 0-0 | 0 | 0 | 0 | 0 | 0 | 0 | 0 | 1 |
| 12 | Parker, C. | 0-0 | 0-0 | 0-0 | 0 | 0 | 0 | 0 | 0 | 0 | 0 | 1 |
| 15 | Price, B. | 0-0 | 0-0 | 0-0 | 0 | 0 | 0 | 0 | 0 | 0 | 0 | 1 |
| 20 | Luczak, T. | 0-0 | 0-0 | 0-0 | 1 | 0 | 0 | 0 | 0 | 0 | 0 | 1 |
| 24 | Cunningham, T. | 0-2 | 0-1 | 0-0 | 0 | 0 | 0 | 0 | 0 | 0 | 0 | 1 |
| 25 | Johnson, R. | 0-0 | 0-0 | 0-0 | 1 | 0 | 0 | 0 | 1 | 0 | 0 | 7 |
| 33 | Smith, D. | 3-8 | 2-5 | 0-0 | 1 | 1 | 8 | 4 | 3 | 0 | 0 | 29 |
| TEAM | | 1 | | | | | | | | | | |
| TOTALS | | 31-61 | 10-27 | 6-8 | 32 | 9 | 78 | 20 | 8 | 3 | 8 | 200 |
| | | (.508) (.370) (.750) | | | | | | | | | | |

Technical Fouls: None

Officials: Mike Stuart, Pad Adams, Ed Corbett

Attendance: 4,892

Score by Half

| | | |
|-------------------|-------|----|
| ULM | 26-37 | 63 |
| Mississippi State | 31-47 | 78 |

| Game 6 - Nov. 26 - Fant-Ewing Coliseum - Monroe, La. | | |
|--|---------|----|
| | HARDING | 71 |
| | ULM | 68 |

MONROE, La. - Sophomore guard Marcelis Hansberry had his 3-point attempt come up short in the final seconds as Harding defeated ULM 71-68 Saturday afternoon inside Fant-Ewing Coliseum.

The Warhawks (0-6) trailed by 11 with 3:24 remaining before making a furious comeback to cut the lead to as close as two. ULM knocked in a trio of 3-pointers during the run and finished 11-of-23 from beyond the arc in the game - the most 3-pointers ULM has made in a game since the 2007-08 season.

Sophomore guard Charles Winborne set a career high with 18 points on 7-of-12 shooting from the field. Winborne is the only ULM player to hit a 3-pointer in all six games this season. Senior guard Fred Brown chipped in 17 points and freshman Trent Mackey scored a career-best 13 points off the bench.

Trailing 66-55, ULM quickly scored five straight points - all from Mackey - to make it a 66-60 game with 2:16 to play. Mackey hit another jumper at the 1:30 mark and Brown knocked home a 3-pointer with 40 seconds remaining to cut the Harding lead to 68-65.

After a pair of free throws from Harding's Weston Jameson, Winborne connected on a 3-pointer to get the Warhawks within two at 70-68 with 19 seconds remaining. Jameson made 1 of 2 from the free-throw line on Harding's next possession, giving ULM the chance to tie the game.

Deontra Scott scored a game-high 24 points to lead four Harding (1-1) players in double figures. Zach Roddenberry contributed 13 points and seven rebounds, while Hayden Johnson and Bradley Spencer each had 10 points.

Harding shot 56 percent in the first half en route to a 40-24 advantage at the break. The Bisons led by as many as 19 (38-19) with 2:08 remaining in the half.

| No. | Harding | FG | 3FG | FT | R | F | TP | A | TO | B | S | MIN |
|--------|-----------------|----------------------|------|-------|----|---|----|----|----|---|---|-----|
| 12 | Walters, M. | 2-6 | 1-4 | 2-2 | 2 | 0 | 7 | 2 | 0 | 1 | 0 | 16 |
| 21 | Johnson, H. | 3-6 | 2-3 | 2-2 | 2 | 2 | 10 | 0 | 1 | 0 | 0 | 24 |
| 42 | Roddenberry, Z. | 6-6 | 0-0 | 1-1 | 7 | 2 | 13 | 1 | 1 | 0 | 0 | 24 |
| 10 | Spencer, B. | 4-6 | 1-2 | 1-2 | 5 | 1 | 10 | 5 | 5 | 0 | 0 | 35 |
| 14 | Jameson, W. | 0-3 | 0-2 | 3-4 | 3 | 0 | 3 | 5 | 4 | 0 | 1 | 35 |
| 03 | Silverman, A. | 0-3 | 0-2 | 0-0 | 2 | 0 | 0 | 0 | 0 | 0 | 0 | 5 |
| 22 | Scott, D. | 6-10 | 5-6 | 7-7 | 6 | 0 | 24 | 0 | 1 | 2 | 1 | 25 |
| 24 | Porter, K. | 1-1 | 0-0 | 0-1 | 1 | 1 | 2 | 3 | 4 | 0 | 0 | 16 |
| 32 | Brown, D. | 0-2 | 0-0 | 0-0 | 0 | 0 | 0 | 0 | 1 | 0 | 0 | 5 |
| 40 | Cannon, L. | 1-3 | 0-0 | 0-0 | 3 | 1 | 2 | 0 | 1 | 0 | 0 | 15 |
| TEAM | | 2 | | | | | | | | | | |
| TOTALS | | 23-46 | 9-19 | 16-19 | 33 | 7 | 71 | 16 | 18 | 3 | 2 | 200 |
| | | (.500) (.474) (.842) | | | | | | | | | | |

| No. | ULM | FG | 3FG | FT | R | F | TP | A | TO | B | S | MIN |
|--------|-----------------|----------------------|-------|-----|----|----|----|----|----|---|---|-----|
| 41 | Ribeiro, F. | 2-6 | 0-0 | 0-0 | 4 | 2 | 4 | 0 | 1 | 0 | 0 | 14 |
| 03 | Hansberry, M. | 2-6 | 0-3 | 2-3 | 3 | 1 | 6 | 5 | 2 | 0 | 2 | 33 |
| 11 | Winborne, C. | 7-12 | 3-6 | 1-1 | 0 | 2 | 18 | 4 | 1 | 0 | 1 | 30 |
| 24 | Mingo, H. | 0-2 | 0-1 | 0-0 | 1 | 3 | 0 | 0 | 0 | 0 | 0 | 10 |
| 55 | Brown, F. | 7-14 | 3-6 | 0-0 | 1 | 0 | 17 | 1 | 1 | 0 | 1 | 27 |
| 04 | McCray, R. | 1-2 | 0-0 | 0-0 | 0 | 0 | 2 | 0 | 0 | 0 | 0 | 16 |
| 05 | Bibi Ndongo, C. | 1-4 | 1-2 | 2-2 | 5 | 4 | 5 | 1 | 0 | 4 | 1 | 25 |
| 10 | Mackey, T. | 5-9 | 3-5 | 0-0 | 1 | 3 | 13 | 3 | 1 | 0 | 1 | 27 |
| 33 | Martin, D. | 0-1 | 0-0 | 0-0 | 0 | 1 | 0 | 0 | 1 | 0 | 1 | 3 |
| 35 | Lindsey, T. | 1-1 | 1-1 | 0-0 | 2 | 4 | 3 | 1 | 2 | 0 | 1 | 15 |
| TEAM | | 3 | | | | | | | | | | |
| TOTALS | | 26-57 | 11-24 | 5-6 | 20 | 19 | 68 | 15 | 10 | 4 | 8 | 200 |
| | | (.456) (.458) (.833) | | | | | | | | | | |

Technical Fouls: None

Officials: John Healy, Mike Million, Matthew Potter

Attendance: 883

Score by Half

| | | |
|---------|-------|----|
| Harding | 40-31 | 71 |
| ULM | 24-44 | 68 |

| Game 7 - Nov. 28 - Stophor Gym - Thibodaux, La. | | |
|---|----------------|----|
| | ULM | 86 |
| | NICHOLLS STATE | 65 |

THIBODAUX, La. - ULM shot a blistering 62 percent from the field in route to an 86-65 victory over Nicholls State Monday evening inside Stophor Gym. It was the first win of the season for the Warhawks, who improved to 1-6.

The Warhawks shot 65.5 percent in the second half and outscored the Colonels 50-31 in the final 20 minutes. It was ULM's highest scoring output of the season and its highest shooting percentage in a game since December of 2009.

Sophomore guard Charles Winborne set a career high in points for the second straight game with 19 points and seven rebounds on 6-of-8 shooting. Senior guard Fred Brown scored 15 points and senior guard Hugh Mingo added 13 points, while freshman Trent Mackey chipped in 12 points and senior Fabio Ribeiro contributed 10 points and seven rebounds.

ULM used a 9-0 run to build a 75-59 lead and put the game out of reach with 5:20 remaining. Brown and Winborne each had 3-pointers during the run, while senior Christian Bibi Ndongo contributed a three-point play.

The Warhawks scored eight straight points, including a pair of 3-pointers from Brown, to build a 52-44 advantage midway through the second half. Mackey hit his third 3-pointer of the game to extend the ULM lead to 57-48 with 10:26 to play.

Mingo hit a jumper just inside the 3-point line with two seconds remaining in the first half as ULM took a 36-34 advantage at halftime. The Warhawks shot 57.1 percent in the half, including making 8 of its final 10 shots.

The lead switched hands 11 times in the first half as neither team led by more than six.

Nicholls State was led by Sam McBeath and Chris Talkington, who each chipped in 12 points on the night. Bryan Hammond had 12 points and Sterling Bailey totaled 10 points for the Colonels.

| No. | ULM | FG | 3FG | FT | R | F | TP | A | TO | B | S | MIN |
|--------|-----------------|----------------------|-------|-------|----|----|----|----|----|---|---|-----|
| 05 | Bibi Ndongo, C. | 1-1 | 0-0 | 2-3 | 2 | 4 | 4 | 0 | 0 | 1 | 0 | 15 |
| 03 | Hansberry, M. | 4-7 | 1-1 | 0-1 | 3 | 3 | 9 | 1 | 0 | 0 | 1 | 24 |
| 10 | Mackey, T. | 4-7 | 4-7 | 0-0 | 0 | 2 | 12 | 0 | 1 | 0 | 0 | 24 |
| 11 | Winborne, C. | 6-8 | 3-5 | 4-5 | 7 | 1 | 19 | 2 | 1 | 0 | 0 | 27 |
| 35 | Lindsey, T. | 1-2 | 0-1 | 0-0 | 0 | 3 | 2 | 3 | 1 | 0 | 0 | 20 |
| 04 | McCray, R. | 1-1 | 0-0 | 0-0 | 0 | 0 | 2 | 4 | 0 | 0 | 0 | 15 |
| 24 | Mingo, H. | 6-9 | 1-2 | 0-1 | 4 | 2 | 13 | 1 | 1 | 0 | 0 | 21 |
| 41 | Ribeiro, F. | 3-5 | 0-0 | 4-7 | 7 | 3 | 10 | 1 | 1 | 0 | 1 | 25 |
| 55 | Brown, F. | 5-10 | 3-5 | 2-2 | 3 | 2 | 15 | 3 | 2 | 0 | 1 | 29 |
| TEAM | | 4 | | | | | | | | | | |
| TOTALS | | 31-50 | 12-21 | 12-19 | 33 | 20 | 86 | 15 | 8 | 1 | 3 | 200 |
| | | (.620) (.571) (.632) | | | | | | | | | | |

| No. | Nicholls State | FG | 3FG | FT | R | F | TP | A | TO | B | S | MIN |
|--------|----------------|----------------------|------|-------|----|----|----|----|----|---|---|-----|
| 02 | Prest, L. | 0-0 | 0-0 | 0-0 | 0 | 3 | 0 | 0 | 0 | 0 | 1 | 15 |
| 11 | Talkington, C. | 3-6 | 2-4 | 4-5 | 1 | 1 | 12 | 0 | 0 | 0 | 0 | 37 |
| 03 | Hammond, B. | 5-11 | 1-3 | 0-0 | 0 | 1 | 11 | 4 | 1 | 0 | 1 | 34 |
| 21 | Rilleux, S. | 4-9 | 1-4 | 3-4 | 4 | 2 | 12 | 4 | 2 | 0 | 1 | 40 |
| 23 | Lewis, T. | 2-4 | 0-1 | 4-5 | 1 | 5 | 8 | 1 | 1 | 0 | 0 | 12 |
| 14 | Triggs, B. | 0-0 | 0-0 | 0-0 | 0 | 0 | 0 | 0 | 0 | 0 | 0 | 2 |
| 15 | McBeath, S. | 4-10 | 3-7 | 1-2 | 3 | 2 | 12 | 2 | 1 | 0 | 0 | 30 |
| 24 | Bailey, S. | 3-4 | 2-3 | 2-2 | 4 | 2 | 10 | 1 | 0 | 0 | 0 | 19 |
| 34 | Smith, J. | 0-0 | 0-0 | 0-0 | 1 | 0 | 0 | 0 | 1 | 0 | 0 | 6 |
| TEAM | | 3 | | | | | | | | | | |
| TOTALS | | 21-44 | 9-22 | 14-18 | 17 | 16 | 65 | 12 | 6 | 0 | 3 | 200 |
| | | (.477) (.409) (.778) | | | | | | | | | | |

Technical Fouls: None

Officials: Buddy Daughdrill, Gregory White, Mitchell Ervin

Attendance: 574

Score by Half



2011-12 ULM MEN'S BASKETBALL

| Game 8 - Dec. 3 - Fant-Ewing Coliseum - Monroe, La. | | | | |
|---|----------------|--|----|--|
| | LOUISIANA TECH | | 73 | |
| | ULM | | 71 | |

MONROE, La. - Sophomore Marcelis Hansberry missed a 3-point attempt from half court with time expiring as Louisiana Tech held on to defeat ULM 73-71 Saturday in a wild game inside Fant-Ewing Coliseum.

The Bulldogs looked to be in control of the game when Raheem Appleby hit a pair of free throws to give Tech a 65-57 advantage with 2:36 remaining, but ULM responded by scoring 14 points in the final two and half minutes and getting as close as one in the final seconds.

The Warhawks (1-7) shot 54.5 percent in the second half and finished at 40.4 percent for the game. ULM knocked in six 3-pointers and made a season-best 19-of-23 from the free-throw line. Louisiana Tech (3-4) shot 42.6 percent for the game, including 8-of-24 shooting from beyond the arc.

Senior guard Fred Brown led the way for the Warhawks with 17 points - all in the second half - on 4-of-10 shooting. Brown tied a season high with four 3-pointers in the game, including two in the final minute.

Brown's fourth 3-pointer of the night cut the Louisiana Tech lead to 72-69 with 21 seconds remaining. On Tech's ensuing possession, Kenyon McNeal missed both free throw attempts to give ULM a chance to tie with 18 seconds remaining.

Sophomore Charles Winborne got fouled with 4.4 seconds remaining and converted both free throws. Romario Souza converted 1- of 2- from the charity stripe, giving the Warhawks the final possession with 3.8 seconds on the clock.

Winborne finished in double figures for the third straight game with 15 points and a team-high five assists. Senior Christian Bibi Ndongo recorded a career-high 10 points and five rebounds off the bench for the Warhawks.

Appleby scored a career-best 19 points on 7-of-15 shooting to lead the way for Louisiana Tech, while Johnson registered 14 points and finished with four 3-pointers. Johnson hit a pair of big 3-pointers as part of a 9-0 run as Louisiana Tech grabbed a 65-57 lead with 2:36 remaining.

The Bulldogs held a 28-24 advantage in the paint and a pivotal 23-9 edge in points off turnovers. The Warhawks, who entered the game as one of the best teams in the Sun Belt at holding onto the ball, finished with 17 turnovers.

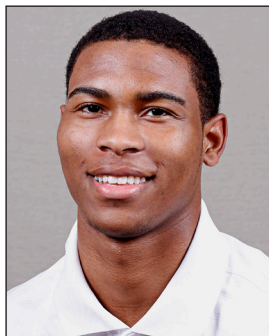
ULM scored the final six points of the first half to close within 32-29 at the break. The Warhawks struggled to shoot in the half, converting just 31.4 percent from the field.

The Bulldogs took control in the first half with a quick 10-0 run that included a pair of 3-pointers. Trevor Gaskins capped the run with a layup to give Louisiana Tech a 25-15 run with 8:54 remaining in the first half.

| No. | Louisiana Tech | FG | 3FG | FT | R | F | TP | A | TO | B | S | MIN | |
|--------|----------------|--------|------|-------|----|----|--------|----|----|---|---|-----|--|
| 25 | Lewis, J. | 4-5 | 0-0 | 2-2 | 4 | 3 | 10 | 1 | 1 | 0 | 1 | 26 | |
| 04 | Smith, K. | 0-0 | 0-0 | 0-0 | 1 | 3 | 0 | 1 | 0 | 0 | 0 | 6 | |
| 05 | Gaskins, T. | 2-8 | 0-4 | 2-2 | 4 | 2 | 6 | 4 | 0 | 0 | 2 | 30 | |
| 15 | Johnson, C. | 5-10 | 4-7 | 0-0 | 3 | 5 | 14 | 3 | 1 | 1 | 1 | 23 | |
| 21 | McNeal, K. | 1-8 | 1-6 | 2-4 | 4 | 2 | 5 | 4 | 3 | 0 | 2 | 32 | |
| 01 | Kyser, M. | 1-1 | 0-0 | 0-0 | 1 | 1 | 2 | 0 | 0 | 1 | 1 | 9 | |
| 02 | Gibson, B. | 2-8 | 2-5 | 2-2 | 3 | 3 | 8 | 0 | 2 | 2 | 0 | 21 | |
| 03 | Appleby, R. | 7-15 | 1-2 | 4-6 | 1 | 2 | 19 | 0 | 1 | 0 | 1 | 30 | |
| 20 | Smith, L. | 0-1 | 0-0 | 0-0 | 2 | 0 | 0 | 1 | 1 | 0 | 0 | 8 | |
| 45 | Souza, R. | 4-5 | 0-0 | 1-2 | 4 | 2 | 9 | 0 | 1 | 0 | 0 | 15 | |
| TEAM | | 3 | | | | | 1 | | | | | | |
| TOTALS | | 26-61 | 8-24 | 13-18 | 30 | 23 | 73 | 14 | 10 | 4 | 8 | 200 | |
| | | (4.33) | | | | | (7.22) | | | | | | |

**TV/RADIO ROSTER**

3 • MARCELIS HANSBERRY
Sophomore • Guard
Jackson, Miss.



4 • R.J. MCCRAY
Sophomore • Guard
Grand Prairie, Texas



5 • CHRISTIAN BIBI NDONGO
Senior • Forward
Yaounde, Cameroon



10 • TRENT MACKEY
Freshman • Guard
Tampa, Fla.



11 • CHARLES WINBORNE
Sophomore • Guard
Shreveport, La.



14 • IFE EKE
Sophomore • Forward
Lagos, Nigeria



15 • STEVEN MCCLELLAN
Sophomore • Center
Fresno, Calif.



23 • REGINALD SMITH
Freshman • Guard
Columbia, La.



24 • HUGH MINGO
Senior • Guard
West Monroe, La.



33 • D'ANDRE MARTIN
Freshman • Guard
Monroe, La.



35 • TREY LINDSEY
Freshman • Forward
Austin, Texas



41 • FABIO RIBEIRO
Senior • Center
Caetnopolis, Brazil



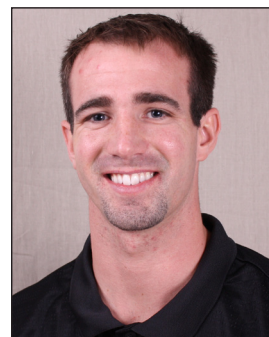
55 • FRED BROWN
Senior • Guard
West Palm Beach, Fla.



KEITH RICHARD
Head Coach



CORD WRIGHT
Assistant Coach



BRANDON ROBERTS
Assistant Coach